

oakheart

£1,500 Per Month

Per Month

Radvald Chase, Stanway

oakheart
01206 805 308
TO LET



This three-bedroom end of terrace house is situated in the highly sought-after Stanway area, on the popular West Side of Colchester. Offering an abundance of amenities nearby, including developing Tollgate Retail Park and Stane Park., with large supermarkets, post office, doctor surgery and dentist nearby. The property also boasts outstanding schooling within walking distance, three Train

Stations under 3 miles away and easy access to the A12/A120.

Internally, the accommodation provides generous and modern living. The entrance hall leads to the lounge which links to the kitchen, with plenty of light through double doors and an extended glass-roofed dining area. The ground floor also benefits from a

downstairs W.C. The first floor provides the second and third bedrooms, both double bedrooms as well as the family shower room. On the third floor, is the master bedroom with a bay window and en-suite bathroom facilities.

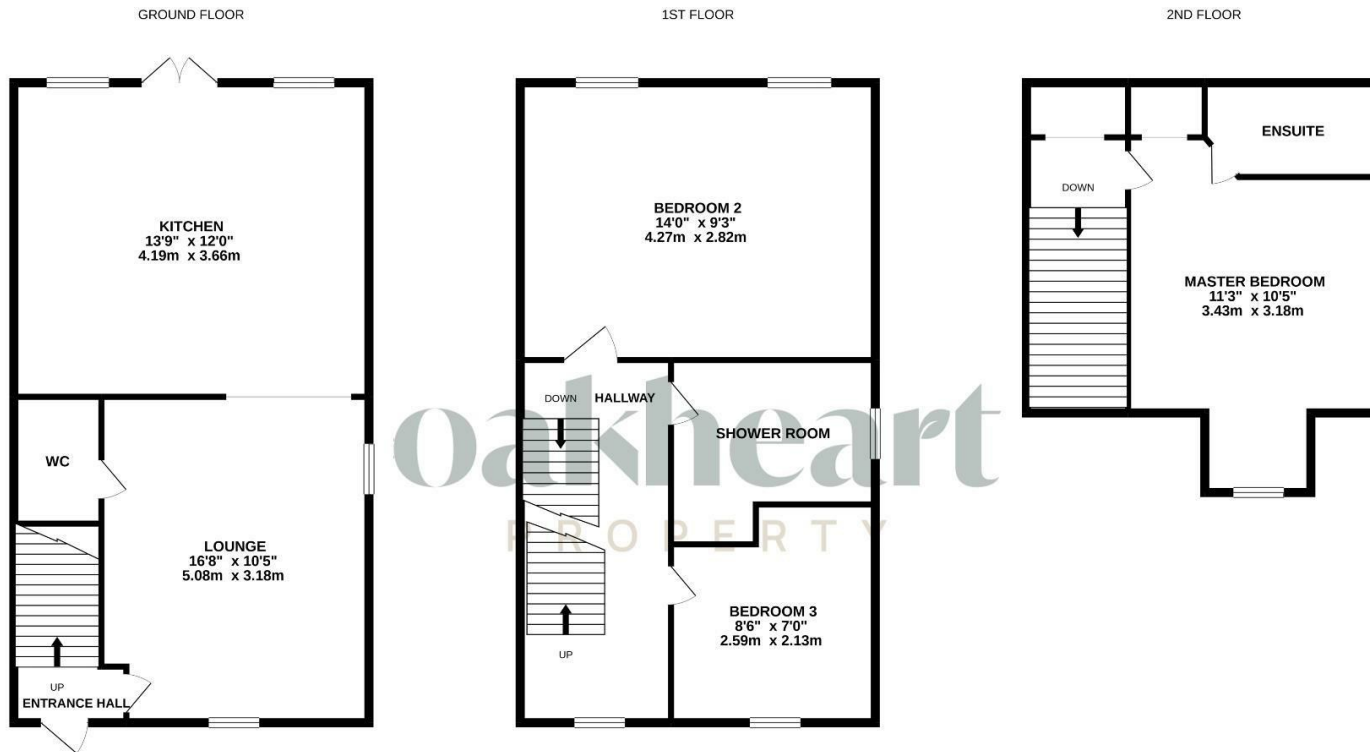
The property benefits from an enclosed rear garden, and boasts off-road parking. Perfect for a family home. Call Oakheart today for further information!











Whilst every attempt has been made to ensure the accuracy of the floorplan contained here, measurements of doors, windows, rooms and any other items are approximate and no responsibility is taken for any error, omission or mis-statement. This plan is for illustrative purposes only and should be used as such by any prospective purchaser. The services, systems and appliances shown have not been tested and no guarantee as to their operability or efficiency can be given.
Made with Metropix ©2021.

Local Authority:
Colchester Borough

Tenure:

Council Tax Band:
C

Energy Efficiency Rating		Current	Potential
Very energy efficient - lower running costs			
(92 plus) A			87
(81-91) B		76	
(69-80) C			
(55-68) D			
(39-54) E			
(21-38) F			
(1-20) G			
Not energy efficient - higher running costs			
England & Wales		EU Directive 2002/91/EC	

Agents Note: Whilst every care has been taken to prepare these particulars, they are for guidance purposes only. All measurements are approximate and are for general guidance purposes only and whilst every care has been taken to ensure their accuracy, they should not be relied upon.

Oakheart Lettings - Colchester
01206 803 303
lettings@oakheartproperty.co.uk
2b Cotman Road, Colchester, Essex, CO3 4QJ

oakheart