



£1,500,000

Guide Price

Western Road, Billericay

Guide Price: £1,500,000 - £1,600,000.

An exquisite 5-bedroom detached home spanning over 2800 square feet, nestled in the charming town of Billericay. Perfectly situated within close proximity to the mainline station, this splendid residence combines modern comfort and elegance.

Upon entering, you'll be greeted by a grand and spacious ground floor that is perfect for both family living and entertaining. The centrepiece of this level is the expansive family kitchen, equipped with appliances and featuring two sets of bifold doors that seamlessly connect the interior with the rear garden. Flooding the room with natural light. Adjacent to the kitchen, you'll find a separate utility room. The ground floor also boasts a comfortable sitting room, an elegant dining room for gatherings, a private study, and a playroom for the younger members of the family. A convenient W/C is also provided for guests' convenience.

Ascending to the first floor, you'll discover the epitome of luxury living. The principal suite is a sanctuary in itself, complete with a dressing room that offers ample storage space and a sumptuous ensuite. The ensuite provides a spa-like experience. The highlight of the principal suite is undoubtedly the private balcony, a retreat to enjoy your morning coffee or unwind with a glass of wine in the evening. The second bedroom also benefits from an ensuite facility fitting to the highest of standards, three additional well-appointed bedrooms on this level offer comfort and privacy for family and guests alike. They are thoughtfully designed and provide versatility in usage. A beautifully designed family bathroom with high-end finishes completes this level.

The exterior of this remarkable home is equally impressive. A garage and off-road parking provide ample space for multiple vehicles. The garden is a true oasis, featuring a large patio/social space that is perfect for outdoor entertaining. The remaining garden area is laid to lawn, creating a serene backdrop.















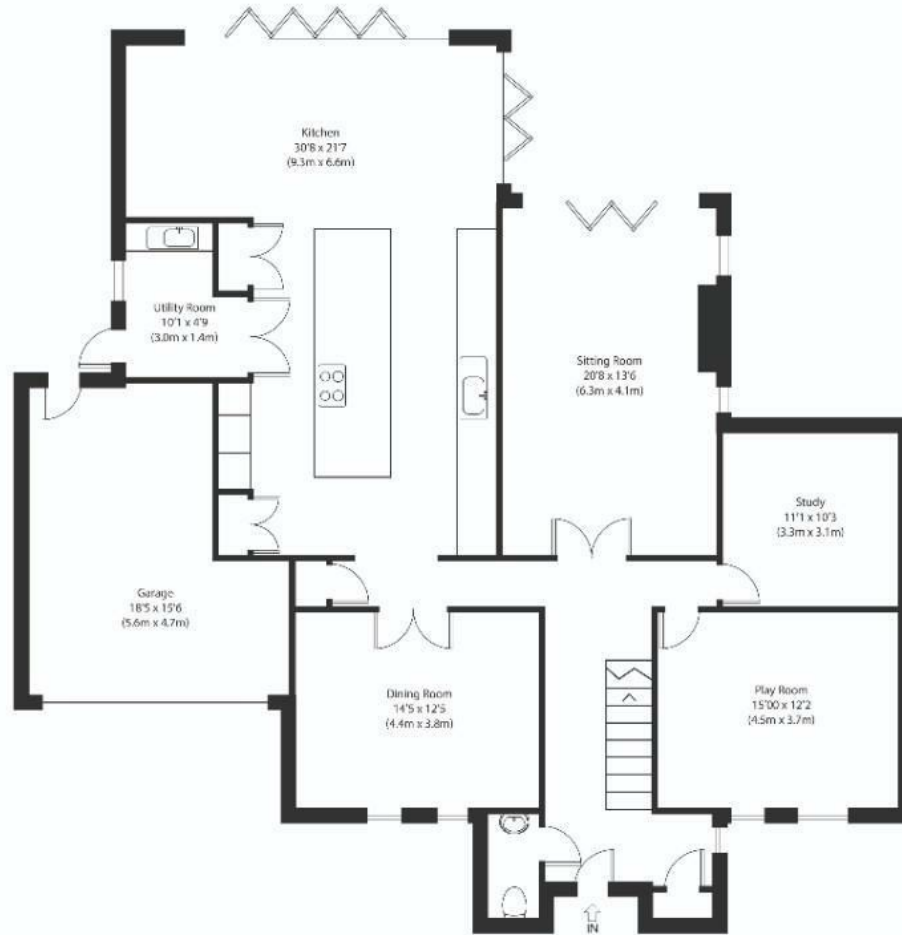




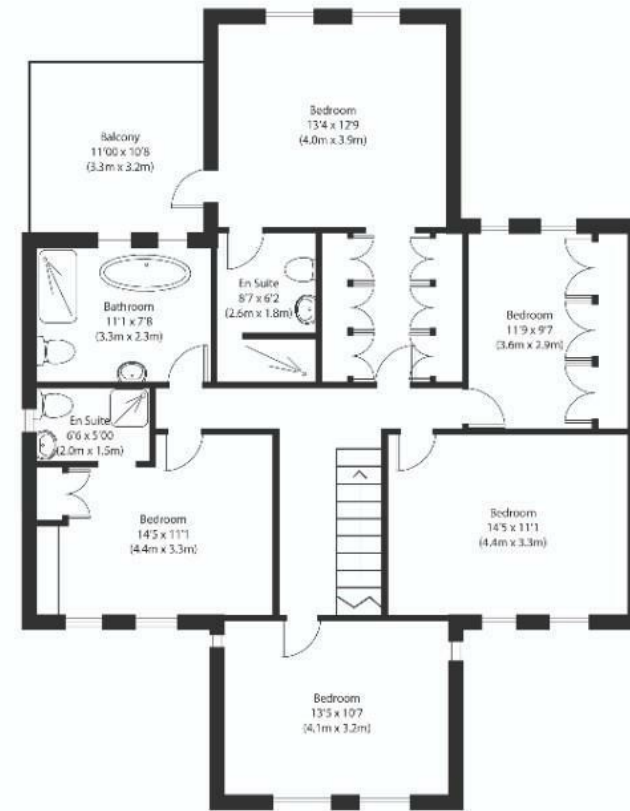


Approximate Gross Internal Area 2860 sq ft (266 sq m)

Disclaimer: Floor area measurements are approximate and are for illustrative purposes only. While we do not doubt the floor plan accuracy and completeness, you or your advisors should conduct a careful, independent investigation of the property in respect of any statutory valuation. Copyright www.ophoto.co.uk



Ground Floor



First Floor



Oakheart Colchester

01206 803 308

colchester@oakheartproperty.co.uk

2b Cotman Road, Colchester, Essex, CO3 4QJ