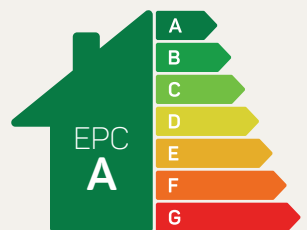




The Ascot

4 bed detached with garage

A spacious 4 bedroom detached home ideal for families. The kitchen/diner is perfect for busy families and boasts French doors opening out to the rear garden. A separate living room offers flexible family living and a place to relax. Upstairs, four double bedrooms provide space for everyone, with an en-suite in the master bedroom and a separate family bathroom.

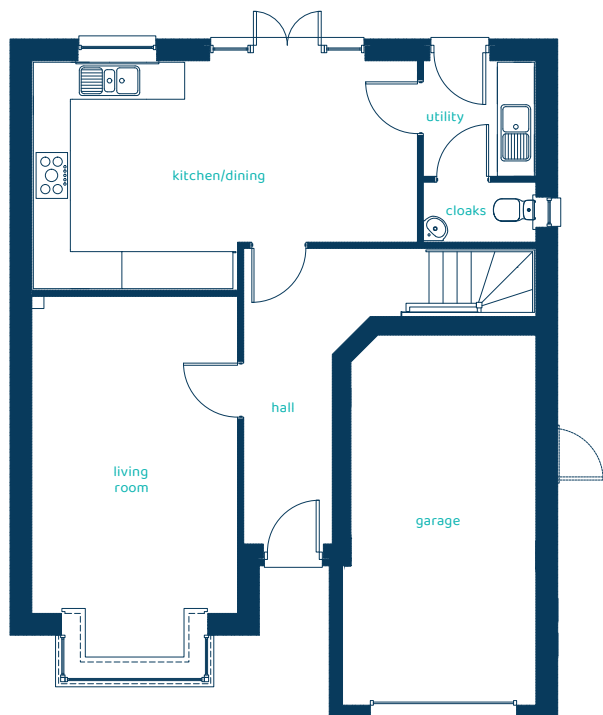


Predicted EPC rating



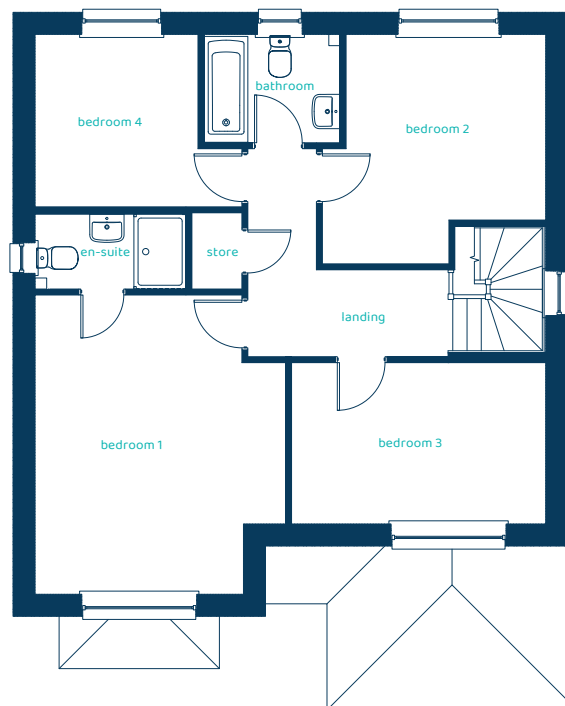
anwylhomes.co.uk

Ground Floor Plan



Room	Imperial	Metric
Kitchen/Dining	20'5" x 12'1"	6.23m x 3.67m
Utility	5'11" x 6'1"	1.80m x 1.85m
Living Room	10'9" x 19'4"	3.29m x 5.88m
Cloaks	5'11" x 3'1"	1.80m x 0.95m

First Floor Plan



Room	Imperial	Metric
Bedroom 1	10'9" x 15'8"	3.28m x 4.76m
En-suite	7'10" x 3'11"	2.39m x 1.2m
Bedroom 2	12' x 11'8"	3.65m x 3.55m
Bedroom 3	13'3" x 8'5"	4.04m x 2.56m
Bedroom 4	8'6" x 9'	2.58m x 2.73m
Bathroom	7'2" x 5'7"	2.18m x 1.71m

The Ascot

4 bed detached with garage

Anwyl Homes is a registered developer with the NHQB. The images on this literature are computer-generated. Specific plots may be 'handed' (mirrored), detached/semi-detached, elevation treatment/roof materials may vary, and any garages may be single or double. Room sizes are approximate, dimensions are taken from the longest room point and are for guidance only. Kitchen and bathroom layouts are indicative. These plans are correct at the time of creation but may be subject to change during construction. Please speak to your Homes Adviser for more details. HS_A_ASCO_G-2_03/09/24.

