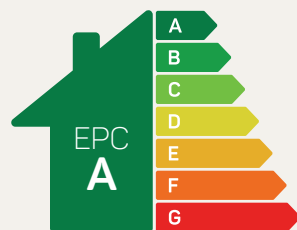




The Lymm

4 bed detached

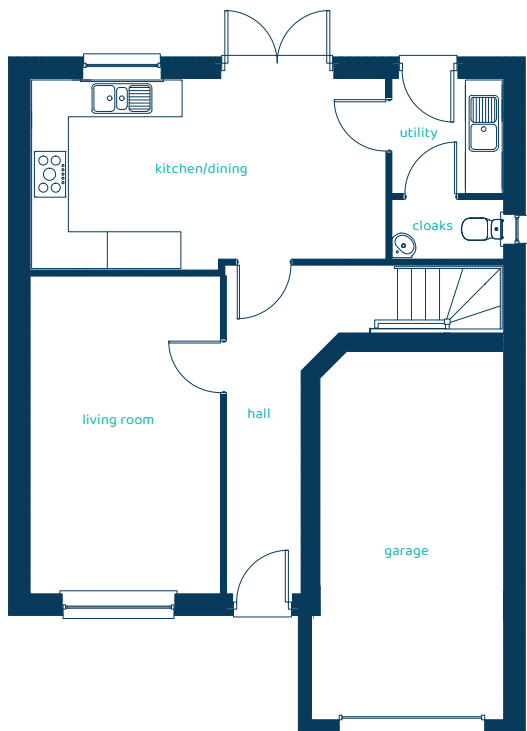
A spacious 4-bedroom detached home. The Lymm is thoughtfully designed to make the most of the space available, providing a well-planned open plan living space and a separate lounge in which to relax. Boasting 4 generously sized bedrooms, integral garage, lovely high ceilings and a roofed porch the lymm is designed for today's family.



Predicted EPC rating

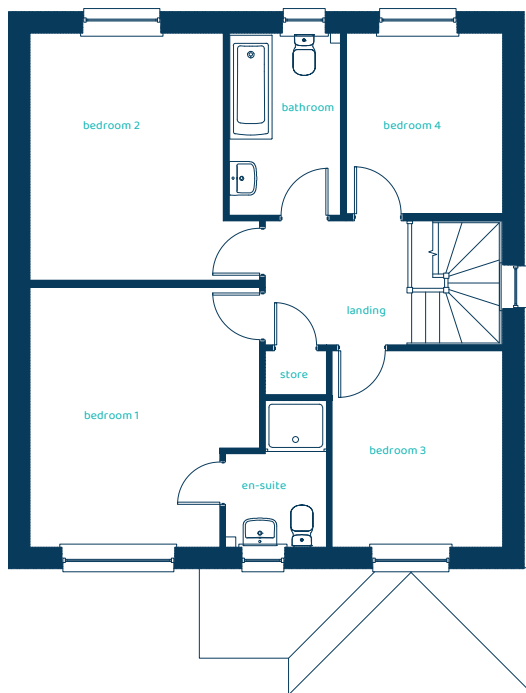
anwylhomes.co.uk

Ground Floor Plan



Room	Imperial	Metric
Kitchen/Dining	19" x 10'1"	5.78m x 3.07m
Utility	5'11" x 6'1"	1.8m x 1.85m
Cloaks	5'11" x 3'1"	1.8m x 0.95m
Living Room	10'1" x 16'10"	3.08m x 5.13m

First Floor Plan



Room	Imperial	Metric
Bedroom 1	12'3" x 13'10"	3.72m x 4.22m
En-suite	5'5" x 7'9"	1.65m x 2.37m
Bedroom 2	12'3" x 13'2"	3.72m x 4.01m
Bedroom 3	9'1" x 10'5"	2.76m x 3.19m
Bedroom 4	8'4" x 9'7"	2.53m x 2.92m
Bathroom	6' x 9'8"	1.82m x 2.95m

The Lymm

4 bed detached

Anwyl Homes is a registered developer with the NHQB. The images on this literature are computer-generated. Specific plots may be 'handed' (mirrored), detached/semi-detached, elevation treatment/roof materials may vary, and any garages may be single or double. Room sizes are approximate, dimensions are taken from the longest room point and are for guidance only. Kitchen and bathroom layouts are indicative. These plans are correct at the time of creation but may be subject to change during construction. Please speak to your Homes Adviser for more details. HS_A_LYMM_G-2_04/09/24.

