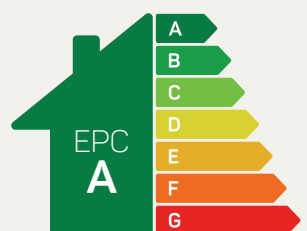




# The Appleton

## 3 bed detached with garage

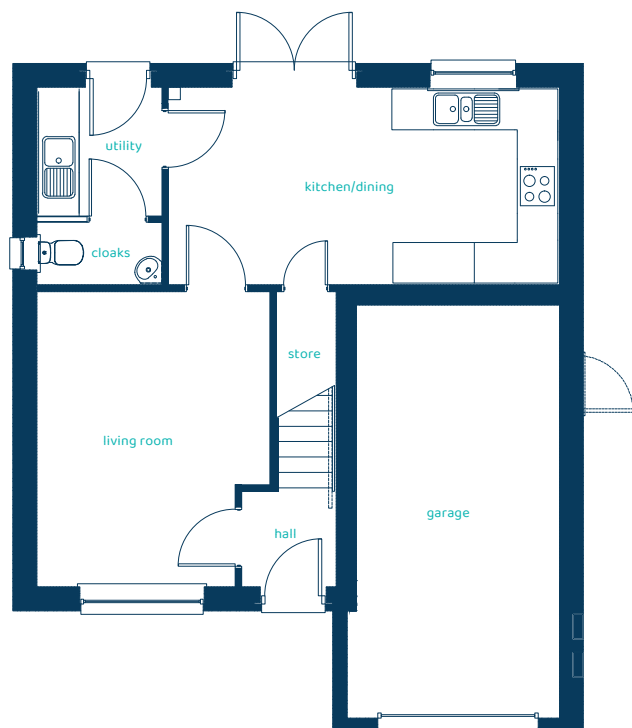
This stunning three-bedroom home is perfect for those seeking a spacious, contemporary living space. The open-plan kitchen/dining area is ideal for entertaining, featuring French doors to extend the space, whilst a separate cosy lounge offers a relaxing retreat. Upstairs, you'll find three generously sized bedrooms, including bedroom one which boasts an en-suite shower room, along with a family bathroom which adds to the home's convenience and comfort.



Predicted EPC rating

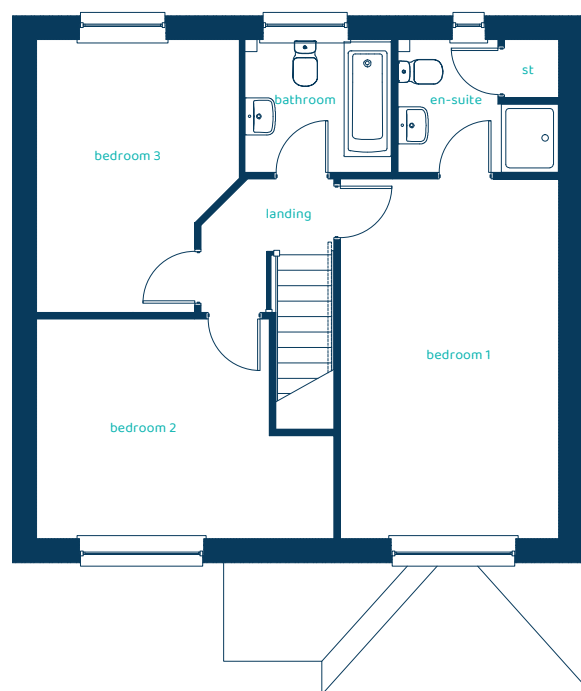
[anwylhomes.co.uk](http://anwylhomes.co.uk)

## Ground Floor Plan



Room	Imperial	Metric
Kitchen/Dining	18'11" x 9'5"	5.76m x 2.87m
Living Room	14'2" x 11'3"	4.31m x 3.42m
Utility	6'2" x 6'	1.88m x 1.82m
Cloaks	6' x 2'11"	1.82m x 0.9m

## First Floor Plan



Room	Imperial	Metric
Bedroom 1	17'5" x 10'6"	5.3m x 3.2m
En-suite	7'9" x 6'4"	2.35m x 1.94m
Bedroom 2	14'4" x 10'7"	4.37m x 3.23m
Bedroom 3	13'2" x 9'9"	4.01m x 2.96m
Bathroom	7'2" x 6'4"	2.17m x 1.94m

# The Appleton

## 3 bed detached with garage

Anwyl Homes is a registered developer with the NHQB. The images on this literature are computer-generated. Specific plots may be 'handed' (mirrored), detached/semi-detached, elevation treatment/roof materials may vary, and any garages may be single or double. Room sizes are approximate, dimensions are taken from the longest room point and are for guidance only. Kitchen and bathroom layouts are indicative. These plans are correct at the time of creation but may be subject to change during construction. Please speak to your Homes Adviser for more details. HS\_A\_APPL\_G-2\_04/09/24.

