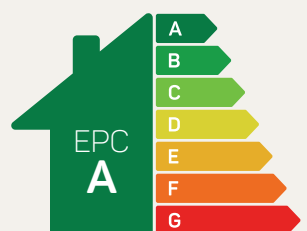




The Henley

4 bed detached

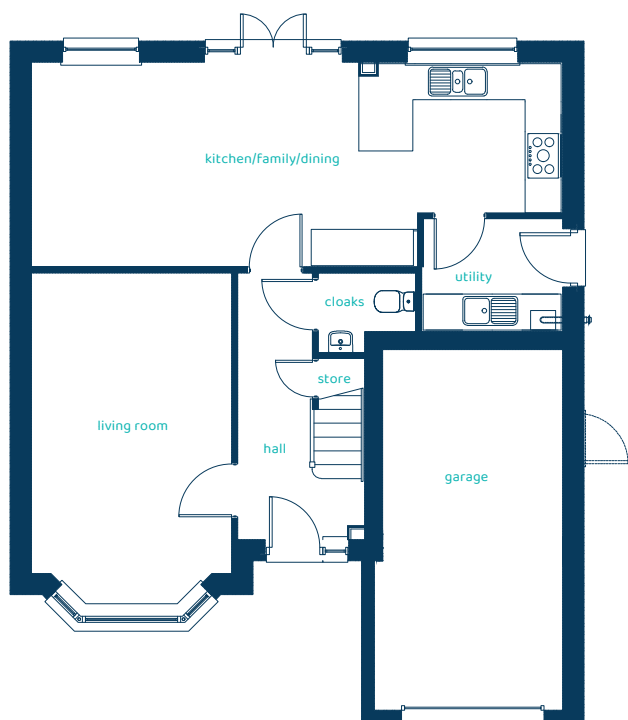
A traditional 4 bedroom detached home. Designed to capture the essence of traditional house building with lovely high ceilings, beautiful bay windows and a roofed porch. Step inside and the Henley is thoughtfully designed for modern family life with open plan family space, separate living room and generously sized bedrooms on offer.



Predicted EPC rating

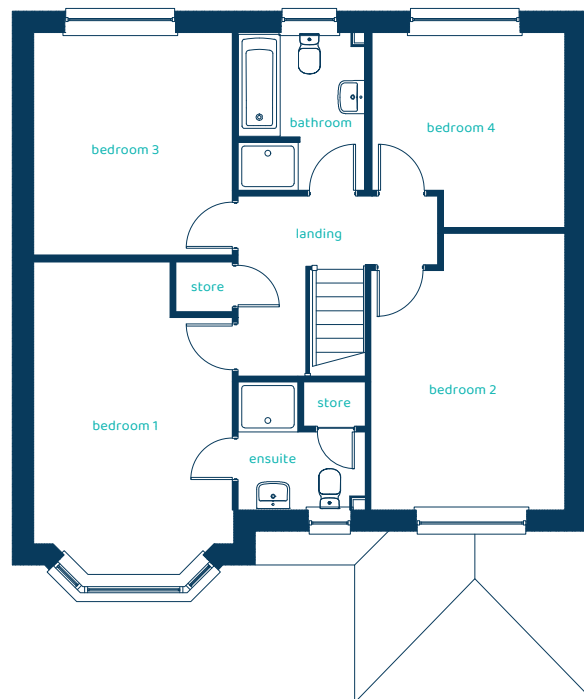
anwylhomes.co.uk

Ground Floor Plan



Room	Imperial	Metric
Kitchen/Dining	28'11" x 11'1"	8.8m x 3.36m
Utility	7'6" x 6'1"	2.3m x 1.85m
Living Room	10'9" x 18'1"	3.28m x 5.51m
Cloaks	5'3" x 4'3"	1.6m x 1.3m

First Floor Plan



Room	Imperial	Metric
Bedroom 1	10'9" x 17'2"	3.28m x 5.22m
En-suite	6'11" x 6'11"	2.12m x 2.11m
Bedroom 2	10'6" x 15'	3.2m x 4.58m
Bedroom 3	10'9" x 12'1"	3.28m x 3.67m
Bedroom 4	10'5" x 10'7"	3.18m x 3.22m
Bathroom	6'11" x 8'6"	2.11m x 2.6m

The Henley

4 bed detached

Anwyl Homes is a registered developer with the NHQB. The images on this literature are computer-generated. Specific plots may be 'handed' (mirrored), detached/semi-detached, elevation treatment/roof materials may vary, and any garages may be single or double. Room sizes are approximate, dimensions are taken from the longest room point and are for guidance only. Kitchen and bathroom layouts are indicative. These plans are correct at the time of creation but may be subject to change during construction. Please speak to your Homes Adviser for more details. HS_A_HENL_G-2_04/09/24.

