



Cleves Court, Willington, DL15

£185,000



 4
  2
  1

EPC rating: C

- 4 Bed Detached Dormer Bungalow
- Spacious Floorplan

- Generously Sized Bedrooms with Integrated Storage
- Integral Garage & Two Car Driveway

Description

Nicholas Humphreys are delighted to bring to market this impressive 4 bed dormer bungalow. This home occupies a generous plot offering spacious living accommodation with both ground and first floor bedrooms. Complete with gas central heating and double glazing throughout.

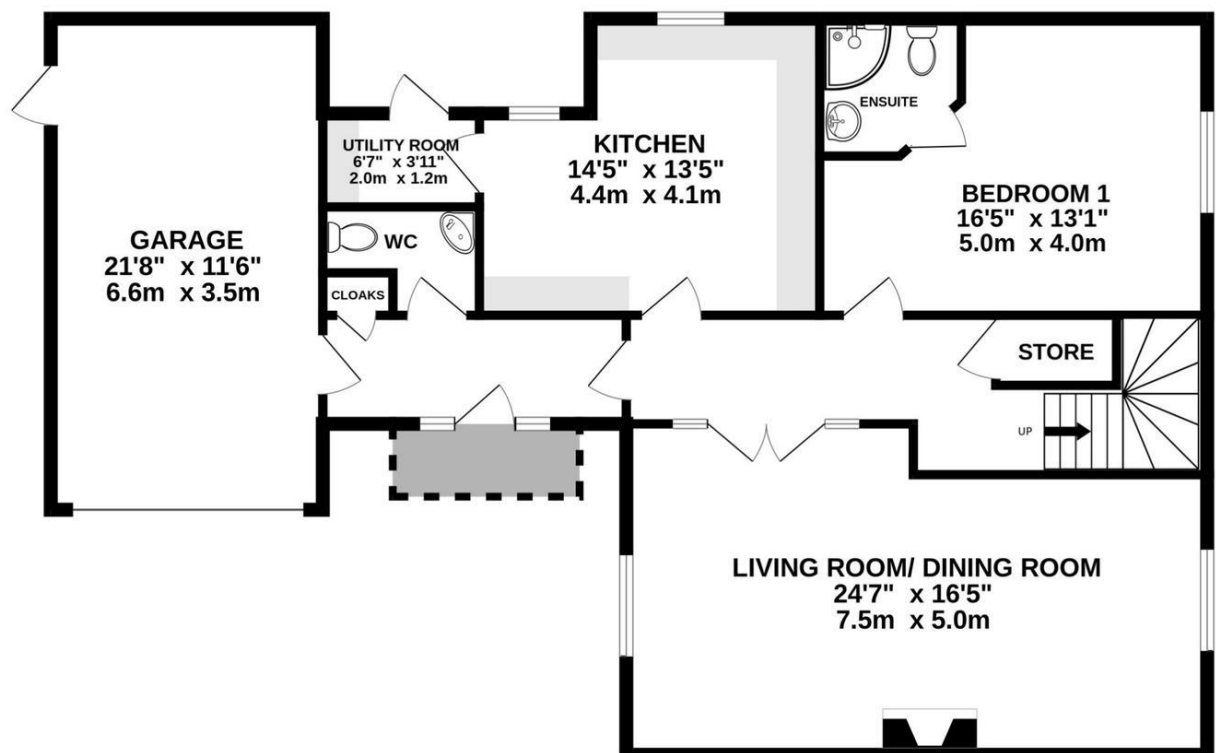
This home boasts an expansive floorplan comprising an entrance porch, ground floor w/c, kitchen, utility room, living room as well as an en-suite double bedroom. To the first floor lie three double bedrooms with built in storage and a communal bathroom.

To the exterior lies a side and rear aspect enclosed garden as well as an integral garage and double driveway.

The home is positioned on a quiet cul-de-sac comprising of just two properties and is only a short distance away to both primary and secondary schooling. The property is ideally located in that it is near an abundance of local amenities including shops, pubs / restaurants and leisure facilities. This home is perfectly positioned with easy and convenient access routes into Durham City, which itself plays host to an abundance of shopping and recreational facilities.

Floorplan

GROUND FLOOR



Photographs



Map



Notes