

## The Maltings Wetmore Road, Burton-On-Trent, DE14 1SE

### £790 Per month

Zero Deposit Option Available

Nestled in close proximity of Burton-On-Trent, is this charming one-bedroom apartment, located in The Maltings development, that beautifully combines modern living with historical elegance. This Grade II listed conversion is a true gem, showcasing the character and heritage of the area while providing all the comforts of contemporary life.

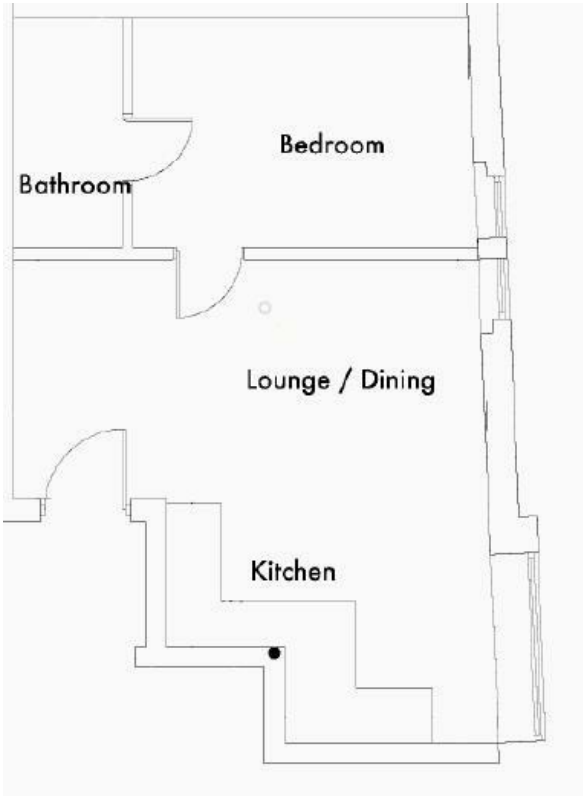
Upon entering the apartment, you will find a well-appointed reception room that serves as a perfect space for relaxation or entertaining guests. The thoughtfully furnished interior creates a warm and inviting atmosphere, making it easy to feel at home. The bedroom is spacious and designed for comfort, ensuring a restful night's sleep. The property features a modern bathroom, equipped with essential amenities to cater to your daily needs.

Additionally, this apartment comes with off-road parking for one vehicle, providing you with peace of mind and ease of access.

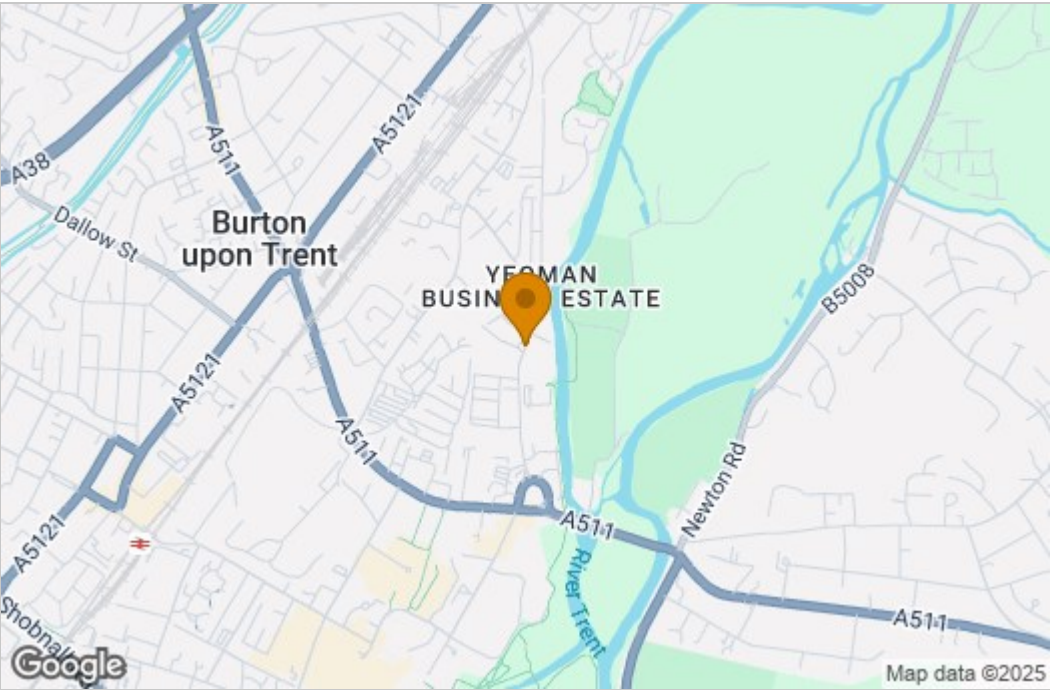
Do not miss the chance to make this charming apartment your new home.



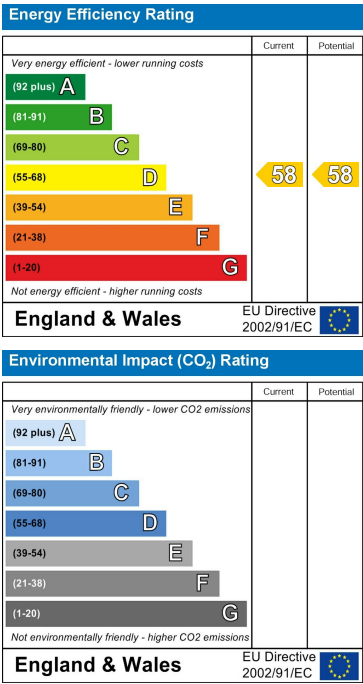
Floor Plan



Area Map



Energy Efficiency Graph



These particulars, whilst believed to be accurate are set out as a general outline only for guidance and do not constitute any part of an offer or contract. Intending purchasers should not rely on them as statements of representation of fact, but must satisfy themselves by inspection or otherwise as to their accuracy. No person in this firms employment has the authority to make or give any representation or warranty in respect of the property.