



Flat 6 Church Court, Leeds, LS27 9TN

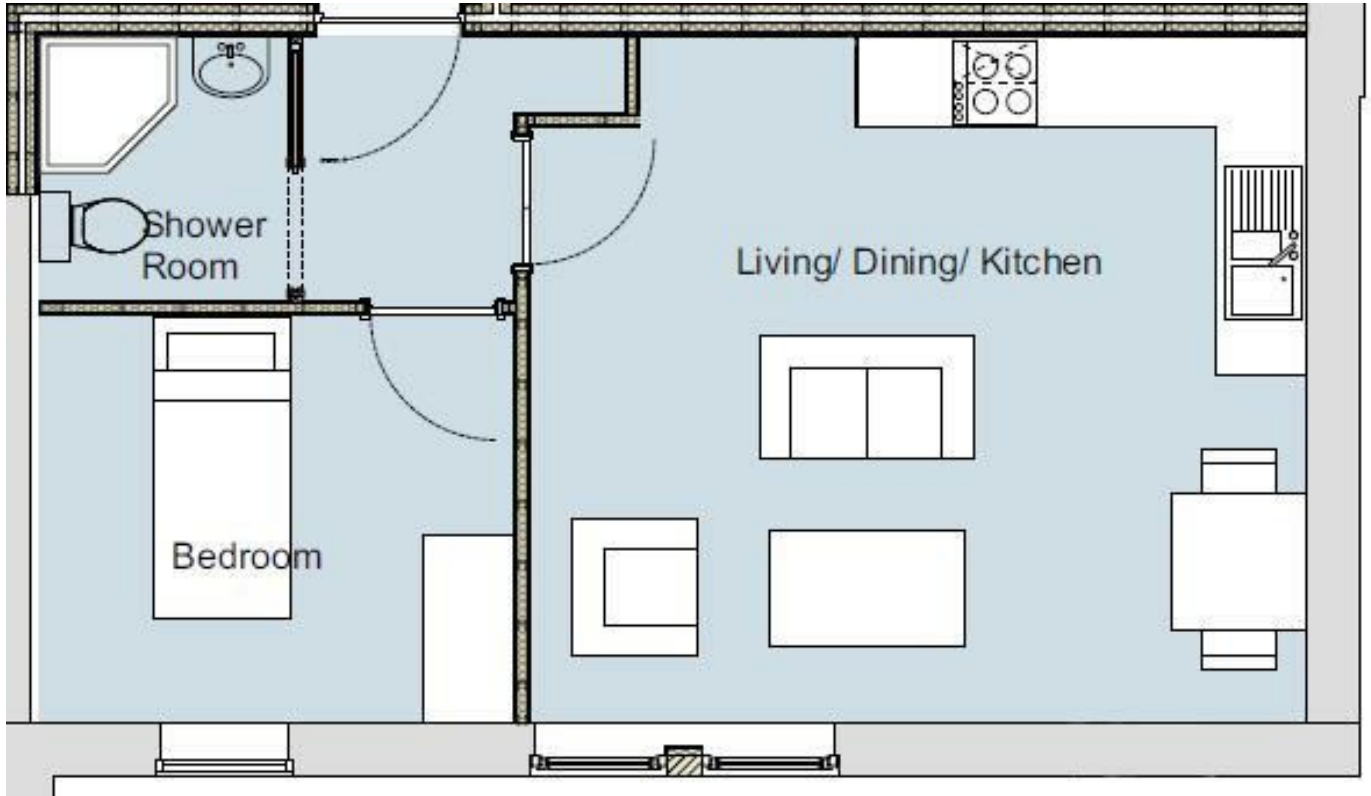
£800 Per month

Church Court is a new development of Studio, One bed and Two bed apartments. The development is located just five minutes walk from Morley town centre, only 10 minutes walk from Morley train station, and with gated secure parking included with each apartment.

This spacious one bed ground floor apartment is offered fully furnished with high quality furniture and white goods included in the open plan kitchen/living area.

Early viewing is highly recommended to avoid missing out on this great apartment.

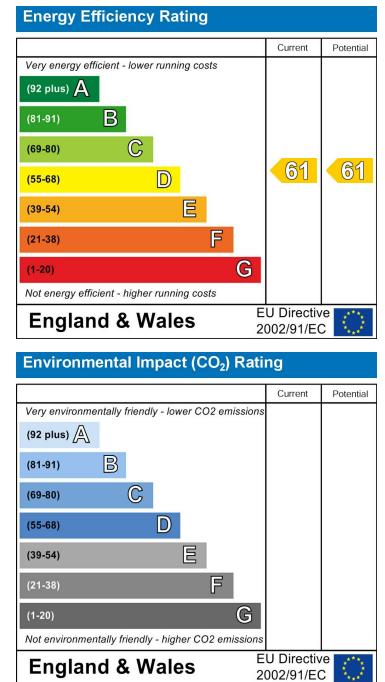
Floor Plan



Area Map



Energy Efficiency Graph



These particulars, whilst believed to be accurate are set out as a general outline only for guidance and do not constitute any part of an offer or contract. Intending purchasers should not rely on them as statements of representation of fact, but must satisfy themselves by inspection or otherwise as to their accuracy. No person in this firm's employment has the authority to make or give any representation or warranty in respect of the property.