

Clifton Park View 15-21 Doncaster Gate, Rotherham, S65 1DE

£625 Per month

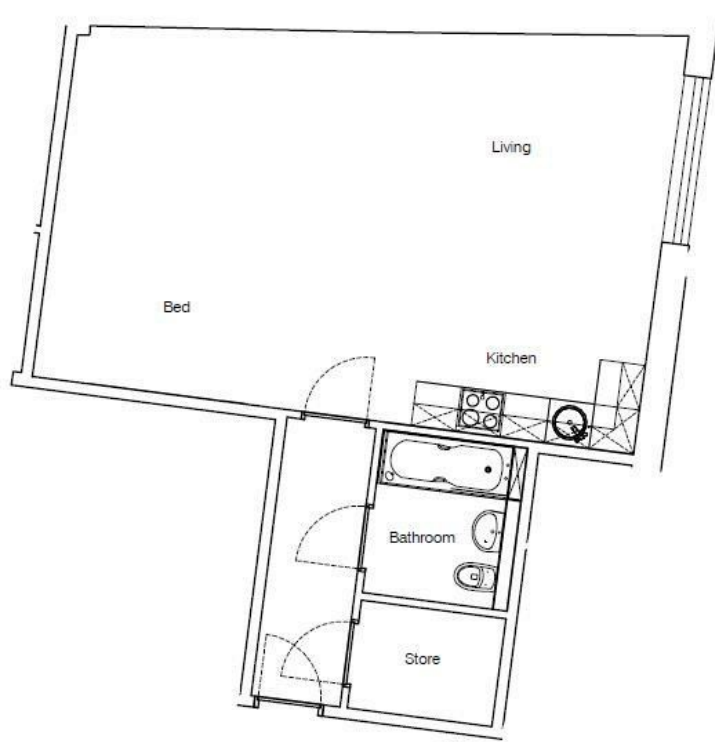
Zero Deposit Option Available

Clifton Park View is a new development of bright and spacious studio and one bed apartments. Located on Doncaster Gate, just minutes from the town centre and Clifton Park, and the train station only a 7 minute walk away, the development is ideally located for anyone looking to be right in the heart of the town centre and all that it has to offer.

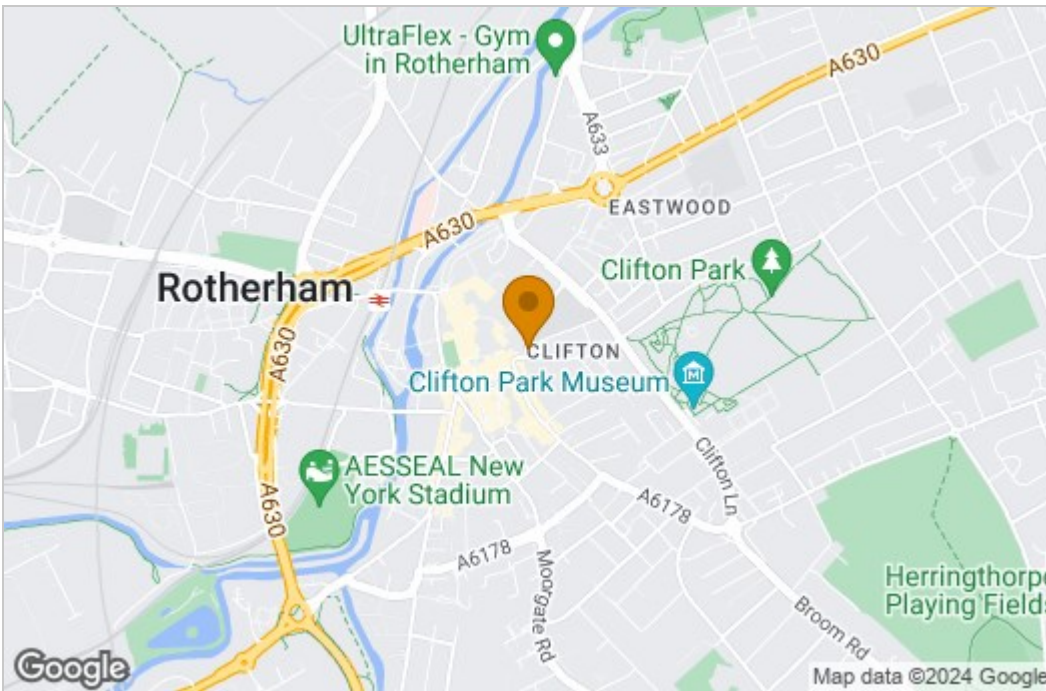
This large studio apartment is located on the top floor, and offered unfurnished with all white goods, including a washer dryer included in the kitchen.

Early viewing is recommended to avoid missing out on this unique apartment.

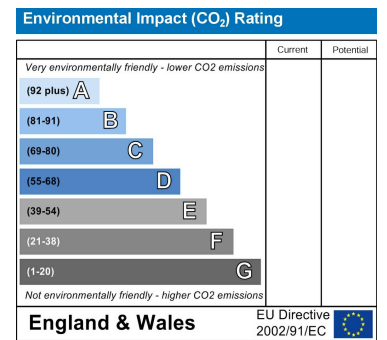
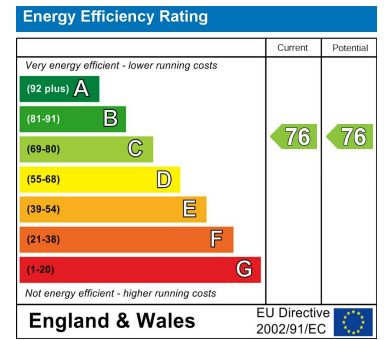
Floor Plan



Area Map



Energy Efficiency Graph



These particulars, whilst believed to be accurate are set out as a general outline only for guidance and do not constitute any part of an offer or contract. Intending purchasers should not rely on them as statements of representation of fact, but must satisfy themselves by inspection or otherwise as to their accuracy. No person in this firm's employment has the authority to make or give any representation or warranty in respect of the property.