



£675,000

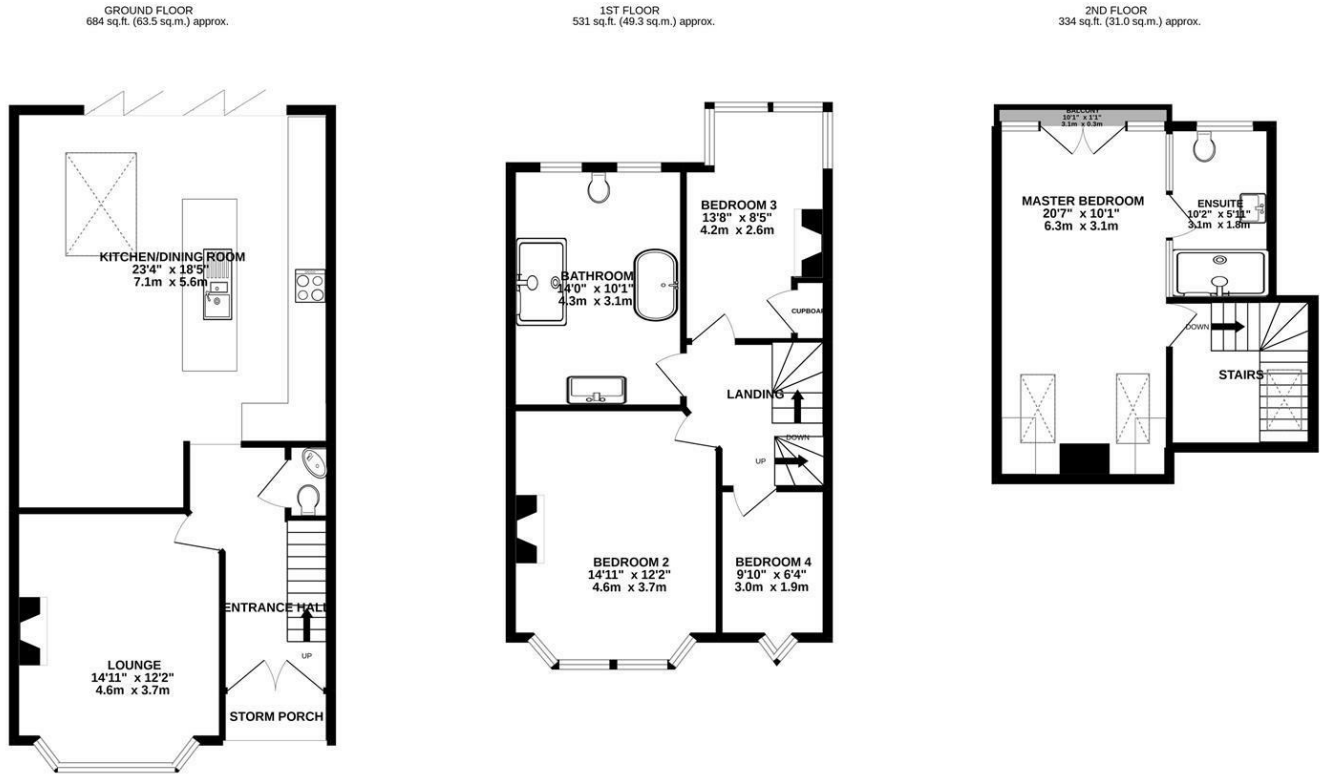
30 Leighton Avenue, Leigh-On-Sea, Essex, SS9 1QB

# 30 Leighton Avenue, Leigh-On-Sea, Essex, SS9 1QB

Are you searching for an immaculate family home just a stone's throw away from Leigh-on-Sea's Broadway and Southend's iconic coastline? Only a short walk along seafront to London-bound rail services. Leighton Avenue is perfectly placed for busy commuters craving the ideal work-life balance.

This beautiful contemporary home, extending over three floors, is packed with fantastic features including a top-floor master suite with estuary views, a brilliant open-plan family and living area, four further bedrooms, and an enclosed garden with artificially laid lawn and sun terrace/bar for al fresco dining.

Welcome Home...



TOTAL FLOOR AREA : 1548 sq.ft. (143.9 sq.m.) approx.

Whilst every attempt has been made to ensure the accuracy of the floorplan contained here, measurements of doors, windows, rooms and any other items are approximate and no responsibility is taken for any error, omission or mis-statement. This plan is for illustrative purposes only and should be used as such by any prospective purchaser. The services, systems and appliances shown have not been tested and no guarantee as to their operability or efficiency can be given.  
Made with Metropix ©2022



- COMMUTER FRIENDLY
- CONTEMPORARY. HIGH-END FINISH
- SECOND FLOOR MASTER SUITE
- EXTENDED
- TOP-FLOOR SEAVIEW
- COASTAL LOCATION
- HUGE OPEN PLAN KITCHEN
- 1,600 SQ FT
- HUGE BATHROOM/WET ROOM
- NICE GARDEN AND TERRACE

