



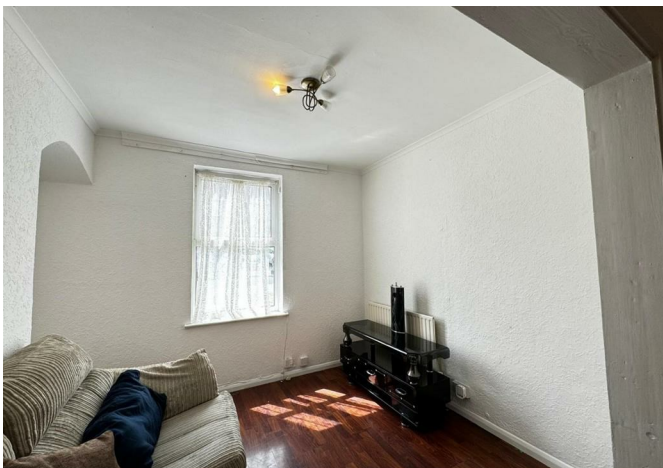
APX PROPERTIES

LOCAL | TRUSTED | EXPERTS



Moorside Road, Bromley, BR1 5ER

£2,150 Per month



Moorside Road, Bromley, BR1 5ER

£2,150 Per month

APX Properties are pleased to market this three bedroom mid-terraced family home on Moorside Road. Benefiting from two reception rooms, conservatory, upstairs family bathroom, three bedrooms and off street parking. Two minute walk to Downham GP Surgery, Gym, School and Co-Op.

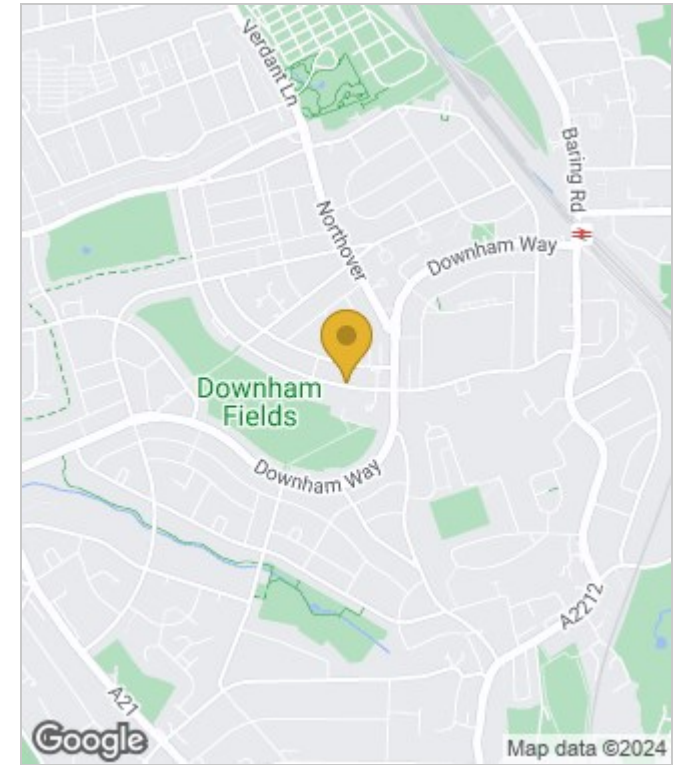
- THREE BEDROOMS
- OFF STREET PARKING
- 15 MINUTE WALK TO GROVE PARK STATION
- TWO RECEPTION ROOMS
- CONSERVATORY
- GOOD SIZE REAR GARDEN
- LOCAL SCHOOLS & SHOPS
- IDEAL FOR A FAMILY
- EPC RATING D
- UNFURNISHED



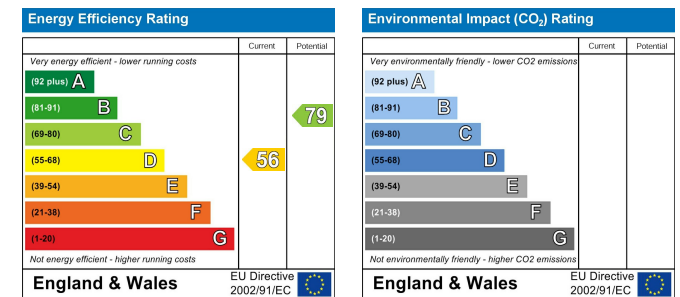
Floor Plans



Area Map



Energy Performance Graph



These particulars, whilst believed to be accurate are set out as a general outline only for guidance and do not constitute any part of an offer or contract. Intending purchasers should not rely on them as statements of representation of fact, but must satisfy themselves by inspection or otherwise as to their accuracy. No person in this firm's employment has the authority to make or give any representation or warranty in respect of the property.

SALES 0203 7450 811

LETTINGS 0203 7450 812

MORTGAGES 0203 7450 815

E info@apxproperties.co.uk

W www.apxproperties.co.uk

424 Downham Way
Bromley, Kent, BR1 5HR