



4 Bedroom Semi-detached House
4 Belmore Close
Norwich, NR7 0PS

Sefftons

£350,000
www.sefftons.co.uk



4 Belmore Close, Norwich, NR7 0PS

GUIDE PRICE £350,000-£375,000. This WELL PRESENTED, EXTENDED FOUR BEDROOM home offers FLEXIBLE ACCOMMODATION, with an OPEN PLAN kitchen/diner for entertaining, and a well established rear garden. Boasting a QUIET, CUL-DE-SAC LOCATION with OFF ROAD PARKING. Call Today to organise your viewing.

THE PROPERTY

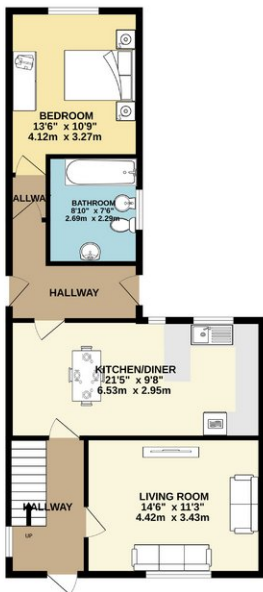
Upon entering the property, you are welcomed into the inviting entrance hall, with stairs up to the first floor and doors to the cosy living room, and generous kitchen/diner. The bright and airy kitchen benefits from ample counter and storage space, and provides a hub for entertaining guests or for family dinners.

Towards the rear of the property, there is a downstairs bedroom and bathroom, making the property suited to multi generational living.

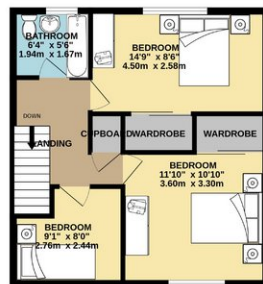
Upstairs are three further bedrooms, two with built in wardrobes, making use of the three piece family bathroom suite.

Energy Efficiency Rating		
	Current	Potential
Very energy efficient - lower running costs		
(92 plus) A		
(81-91) B		84
(69-80) C	69	
(55-68) D		
(39-54) E		
(21-38) F		
(1-20) G		
Not energy efficient - higher running costs		

GROUND FLOOR
711 sq.ft. (66.1 sq.m.) approx.



1ST FLOOR
469 sq.ft. (43.6 sq.m.) approx.



TOTAL FLOOR AREA: 1180 sq.ft. (109.7 sq.m.) approx.

While every attempt has been made to ensure the accuracy of the floor plan, the contractor's measurements of doors, windows, walls and any other items are approximate and the responsibility is taken by the purchaser or his solicitor. This plan is for illustrative purposes only and should be used as such by any prospective purchaser. The services, fixtures and fittings shown here are not intended to be a guarantee of any kind, and the purchaser should verify the details on the ground. Made with Metagrip 02/18

