

Fred.

ESTATE AGENTS



5 South Loan

Glasgow

Offers over £190,000



2



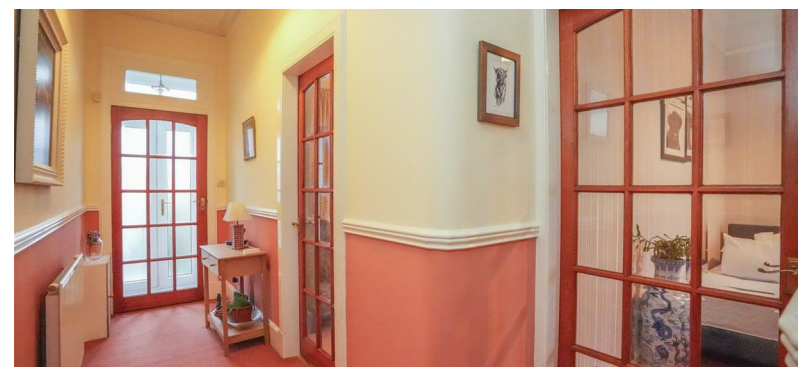
1



2



E





Situated within the much sought after area of Chryston and providing well appointed spacious accommodation lies this two bedroom semi detached sandstone property.

Set over two levels this property is an ideal traditional family home. The ground floor comprises of entrance vestibule, carpeted hallway, two good size lounge areas with one benefiting from a feature fireplace, a modern fitted kitchen with built in oven and gas hob and integrated fridge freezer. On the half landing you will find a good size bathroom consisting of four piece suite with separate shower enclosure. On the upper floor there are two bedrooms, both of which are carpeted throughout with the master having ample storage space.

The property also benefits from gas central heating, single garage, double glazing windows and front and rear gardens.

South Loan is well placed within easy reach of amenities with the area offering easy access to a great selection of shops, bars, restaurants and leisure facilities. It is perfectly located for the commuter, with the nearby M8 providing convenient access to the central belt. The area also offers excellent public transport, with train and bus services providing links to the surrounding areas.



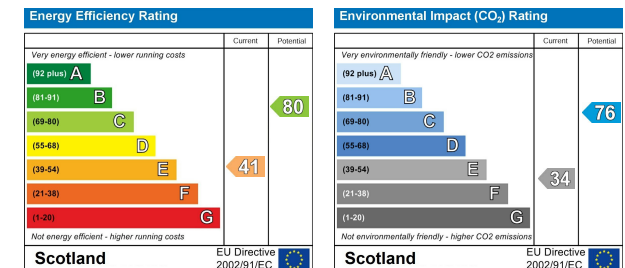
This floor plan is for guidance only and is not drawn to scale. Please check all dimensions and shapes before making any decision on measurements.
LV Productions. Lvenditti@hotmail.com

Viewing

Please contact us on 01698 305618 if you wish to arrange a viewing appointment for this property or require further information.

These particulars, whilst believed to be accurate are set out as a general outline only for guidance and do not constitute any part of an offer or contract. Intending purchasers should not rely on them as statements of representation of fact, but must satisfy themselves by inspection or otherwise as to their accuracy. No person in this firms employment has the authority to make or give any representation or warranty in respect of the property.

Energy Efficiency Graph



438 Brandon Street, Motherwell, North Lanarkshire, ML1 1XA
01698 305618 | info@fredestateagents.co.uk