



23 Campbell Street

Wishaw

Offers over £260,000



5



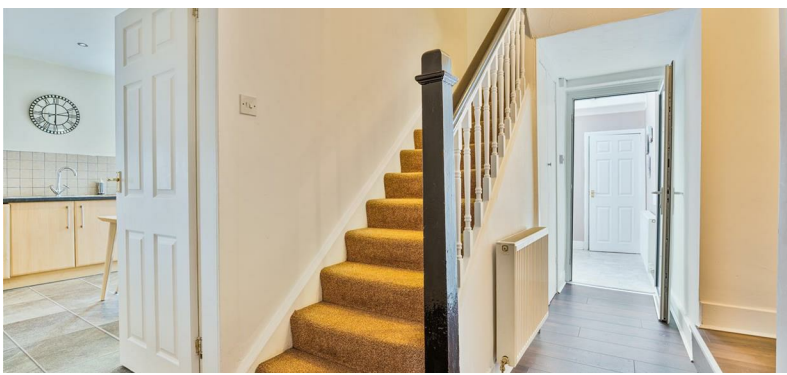
2



3



D





Prepare to be impressed by this substantial 5-bedroom end-terraced sandstone villa located in a desirable area of Wishaw.

Step inside to discover a generous layout boasting three public rooms, including a large lounge with elegant bay window and fireplace feature, a bright conservatory, and an additional sitting room currently used as a home office. The heart of the home is the spacious breakfasting kitchen, complemented by a separate utility room, ideal for busy family life.

The ground floor also hosts three well-proportioned bedrooms and a stunning modern, fully tiled bathroom complete with a freestanding bath and separate shower. Upstairs, you'll find two further double bedrooms and a beautifully finished second bathroom. Outside, the charm continues with a private, enclosed large garden — a perfect retreat — with a unique bonus: an outhouse converted into a stylish bar room, ideal for weekend gatherings or quiet nights in.

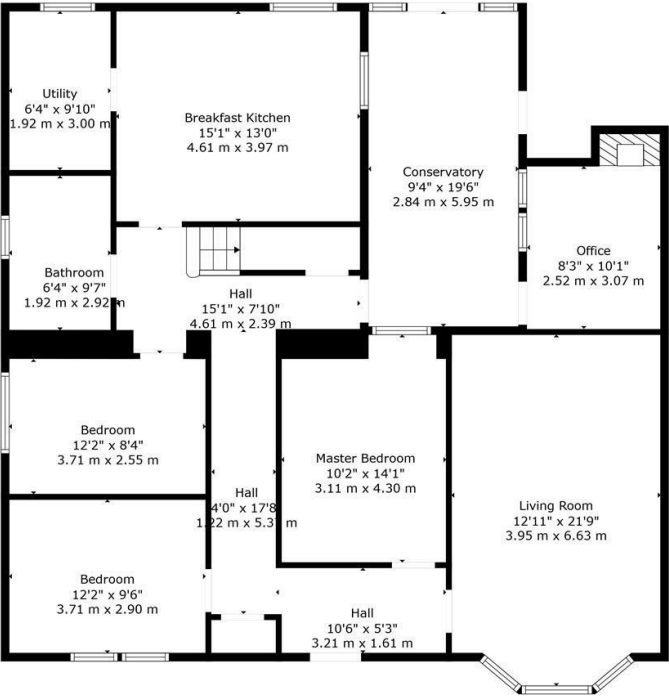
Further features of this property include a driveway for off street parking, Gas fired central heating, double glazing and a large private garden with standout outhouse.

Wishaw offers a great selection of shops, bars, restaurants and leisure facilities. It is perfectly located for the commuter, with the M74 providing convenient access to the central belt. The town also offers excellent public transport, with train and bus services providing links to the surrounding areas.

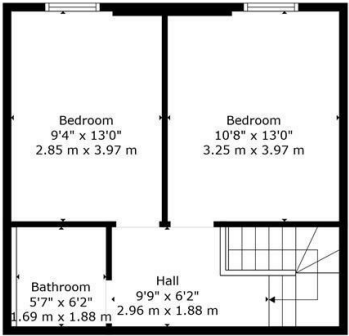
Viewing

Please contact us on 01698 305618 if you wish to arrange a viewing appointment for this property or require further information.

These particulars, whilst believed to be accurate are set out as a general outline only for guidance and do not constitute any part of an offer or contract. Intending purchasers should not rely on them as statements of representation of fact, but must satisfy themselves by inspection or otherwise as to their accuracy. No person in this firms employment has the authority to make or give any representation or warranty in respect of the property.



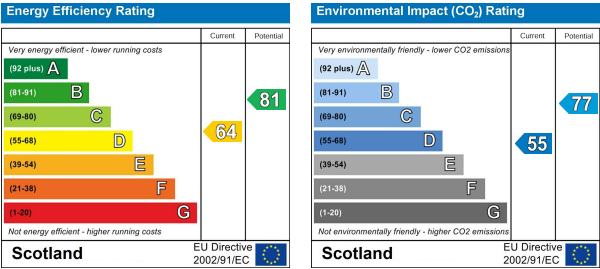
Floor 1



Floor 2

TOTAL: 1913 sq. ft, 178 m2
FLOOR 1: 1516 sq. ft, 141 m2, FLOOR 2: 397 sq. ft, 37 m2
EXCLUDED AREAS: FIREPLACE: 9 sq. ft, 1 m2

Energy Efficiency Graph



438 Brandon Street, Motherwell, North Lanarkshire, ML1 1XA
01698 305618 | info@fredestateagents.co.uk