



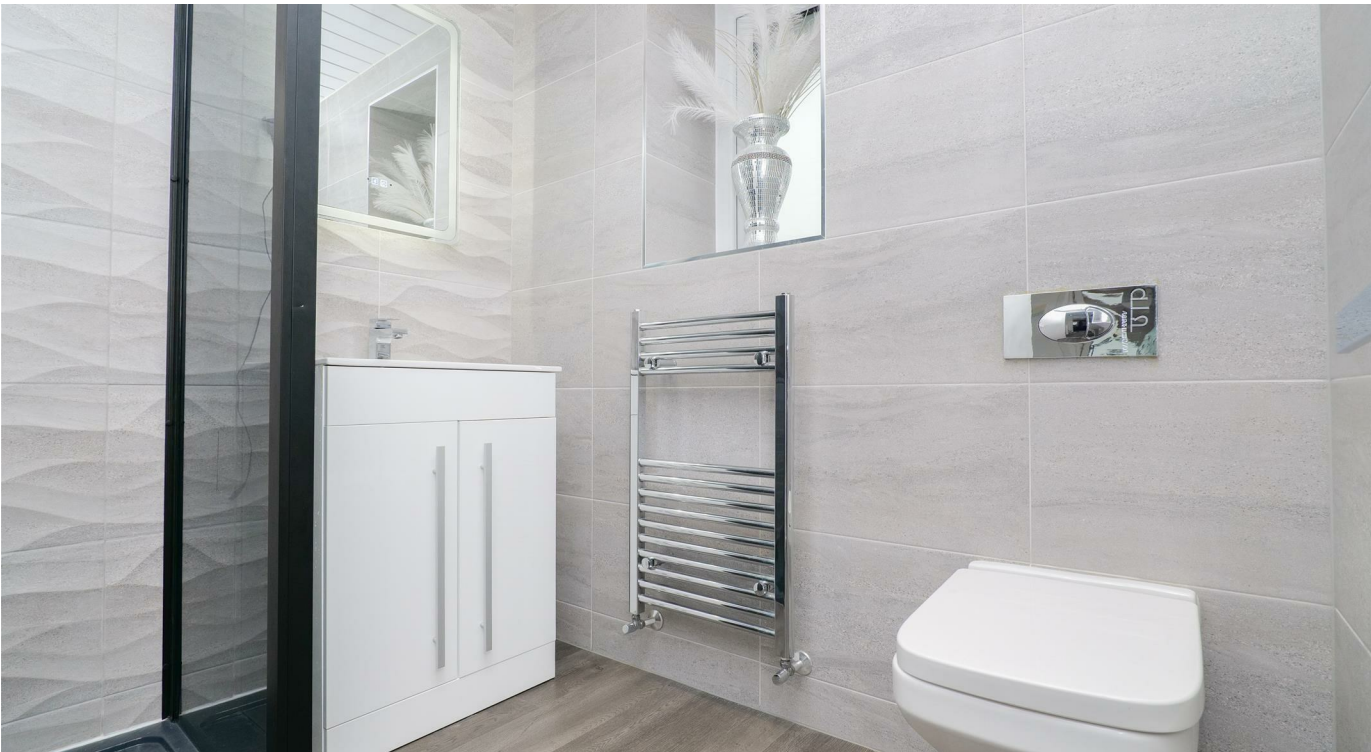
2 Bailie Fyfe Way

Wishaw

Offers over £250,000







Situated in a quiet cul-de-sac within the town of Overtown, Wishaw and providing spacious accommodation over two levels, lies this exceptional three bedroom extended detached villa.

Presented in true walk in condition this property has been completed to a high standard throughout. Set over two levels with the ground floor comprising of a welcoming entrance hallway, an open plan front facing lounge with large floor to ceiling window allowing for plenty of natural light, a utility room and cloakroom WC. Completing this floor and forming part of the incredible extension you will find an office area, a stunning modern kitchen/dining/sitting area with fitted floor and wall mounted units, built in eye level oven, separate island with fitted hob, tiled flooring and French doors providing access to the rear garden

On the upper floor via the beautiful carpeted staircase with glass balustrade you will find three good size bedrooms, all of which are carpeted throughout with ample storage space and the master benefiting from a beautiful fully tiled shower room. Completing this floor is a further bathroom with large shower enclosure, WC and vanity sink unit.

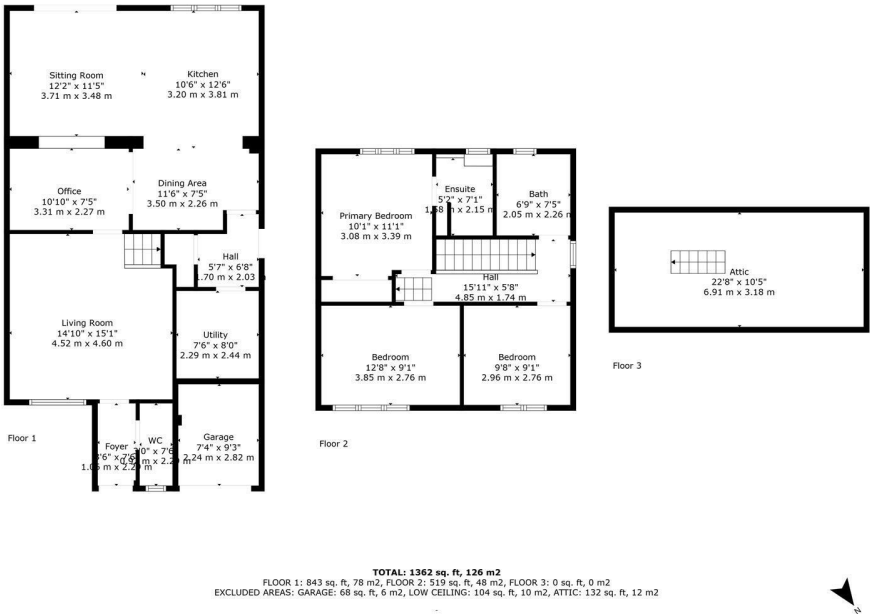
The property also benefits from a large monoblock driveway providing ample off street parking, integral garage and a sizeable stunning rear garden which has been fully landscaped in porcelain paving with a separate raised patio area and finished with composite panel fencing.

Wishaw offers a great selection of shops, bars, restaurants and leisure facilities. The town also offers excellent public transport, with train and bus services providing links to the surrounding areas. For those commuting by car it is perfectly located, with the M74 and M8 within easy reach. Nearby towns include Motherwell, Hamilton, Carluke, Larkhall and Lanark.

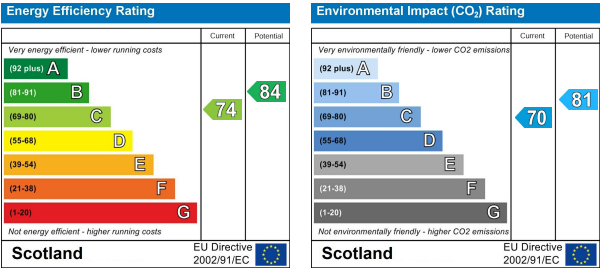
Viewing

Please contact us on 01698 305618 if you wish to arrange a viewing appointment for this property or require further information.

These particulars, whilst believed to be accurate are set out as a general outline only for guidance and do not constitute any part of an offer or contract. Intending purchasers should not rely on them as statements of representation of fact, but must satisfy themselves by inspection or otherwise as to their accuracy. No person in this firms employment has the authority to make or give any representation or warranty in respect of the property.



Energy Efficiency Graph



438 Brandon Street, Motherwell, North Lanarkshire, ML1 1XA
01698 305618 | info@fredestateagents.co.uk