

Fred.

ESTATE AGENTS



16 Dudley Drive

Glasgow

Offers over £215,000



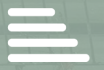
1



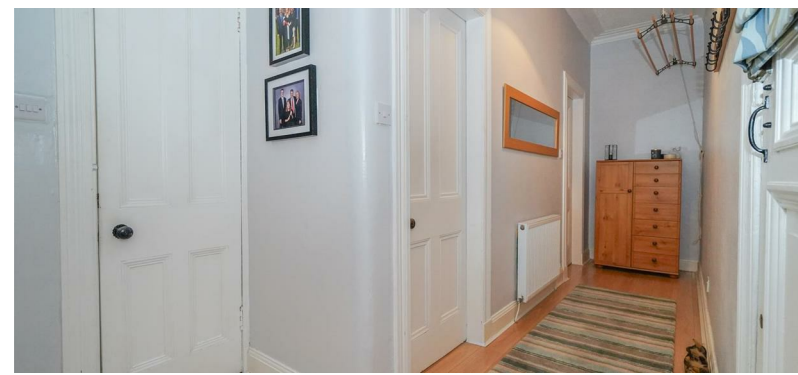
1

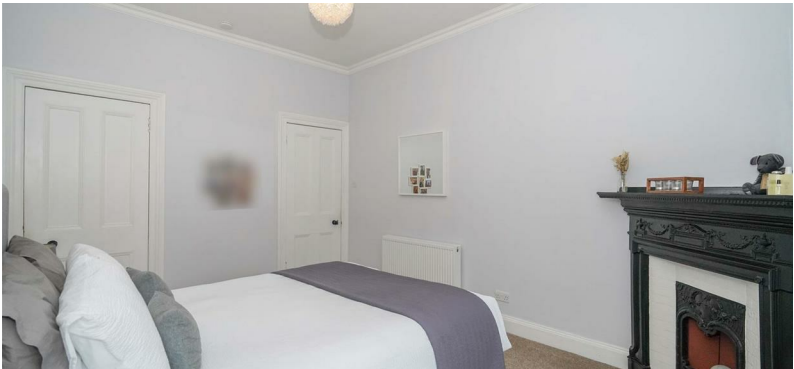


1



D





Nestled in the sought-after Hyndland district of Glasgow, this trendy top floor flat on Dudley Drive offers a delightful living experience. With one well-proportioned bedroom, this beautifully appointed property is perfect for individuals or couples seeking a stylish and comfortable home.

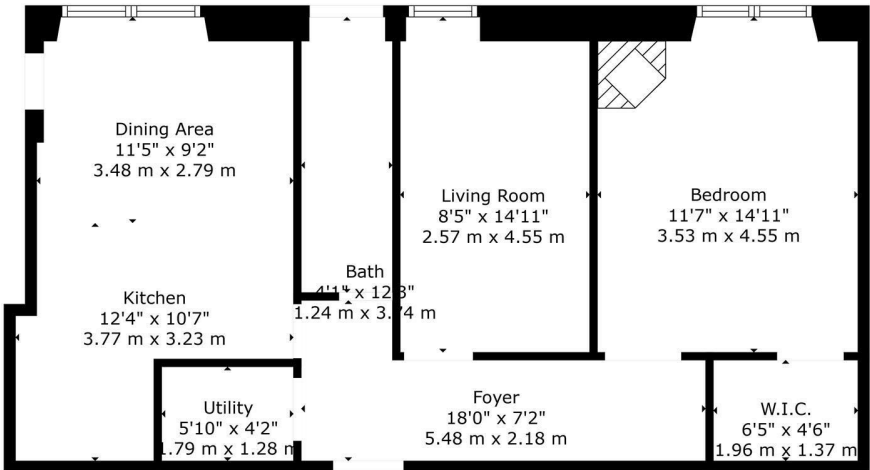
This immediately impressive and immaculately presented one bedroom red sandstone tenement occupies a top floor position. This charming property is presented in walk in condition throughout offering a welcoming entrance hallway, leading through to a lovely lounge with carpeted flooring and neutral colour decor. The stunning kitchen/dining area features quality wooden flooring, modern fitted wall and floor mounted units with integrated appliances, ample space for dining table and large window allowing for plenty of natural daylight. One great size bedroom featuring plush carpeted flooring, storage cupboard, a focal point fireplace and walk in wardrobe/cupboard. There is also a fully tiled stylish bathroom consisting of WC, vanity sink unit and walk in shower enclosure with rainfall shower.

Dudley Drive occupies an incredibly enviable location within Hyndland, close to the vibrant local amenities of Hyndland Road and Byres Road, including boutique shops, cafes and restaurants. Easy access to The University of Glasgow and The Botanic Gardens as well as excellent transport links including Hyndland Railway Station.

Viewing

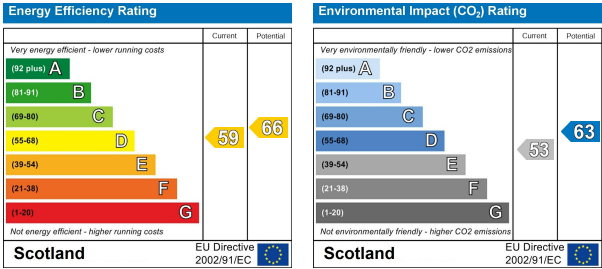
Please contact us on 01698 305618 if you wish to arrange a viewing appointment for this property or require further information.

These particulars, whilst believed to be accurate are set out as a general outline only for guidance and do not constitute any part of an offer or contract. Intending purchasers should not rely on them as statements of representation of fact, but must satisfy themselves by inspection or otherwise as to their accuracy. No person in this firms employment has the authority to make or give any representation or warranty in respect of the property.



TOTAL: 709 sq. ft, 66 m2
FLOOR 1: 709 sq. ft, 66 m2

Energy Efficiency Graph



438 Brandon Street, Motherwell, North Lanarkshire, ML1 1XA
01698 305618 | info@fredestateagents.co.uk