

Fred.

ESTATE AGENTS



28 Kirk Road

Wishaw

Offers over £55,000



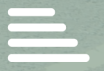
2



1



1



C



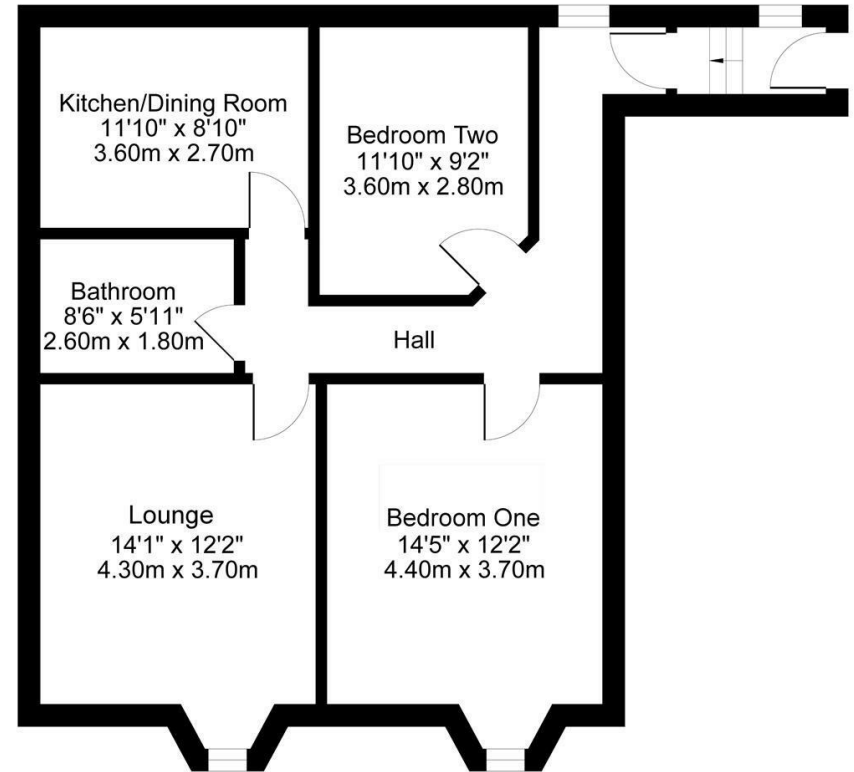


Located in a central location within the town of Wishaw and providing bright and airy accommodation throughout, lies this two bedroom top floor flat.

This spacious top floor apartment comprises of an entrance hallway, two bedrooms with neutral colour decor and space for furniture, a front facing lounge allowing for plenty of natural daylight, a family bathroom consisting of a WC, wash hand basin and bath with overhead mixer shower, a modern kitchen dining area with fitted wall and floor mounted units and built in oven and gas hob.

The property also benefits from gas central heating, double glazed windows throughout and secure door entry via rear courtyard.

Wishaw offers a great selection of shops, bars, restaurants and leisure facilities. It is perfectly located for the commuter, with the M74/M8 providing convenient access to the central belt. The town also offers excellent public transport, with train and bus services providing links to the surrounding areas.

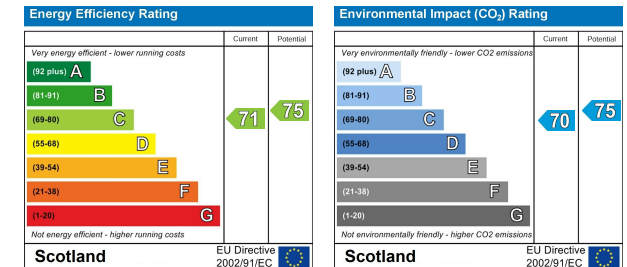


Viewing

Please contact us on 01698 305618 if you wish to arrange a viewing appointment for this property or require further information.

These particulars, whilst believed to be accurate are set out as a general outline only for guidance and do not constitute any part of an offer or contract. Intending purchasers should not rely on them as statements of representation of fact, but must satisfy themselves by inspection or otherwise as to their accuracy. No person in this firm's employment has the authority to make or give any representation or warranty in respect of the property.

Energy Efficiency Graph



438 Brandon Street, Motherwell, North Lanarkshire, ML1 1XA
 01698 305618 | info@fredestateagents.co.uk