

Fred.

ESTATE AGENTS



4 Dickson Square

Motherwell

Offers over £85,000







Set within the Cleland area, Motherwell and providing spacious accommodation over two levels, lies this two bedroom mid terrace property.

Set over two levels with the ground floor comprising of a welcoming entrance, a bright and spacious open plan front facing lounge, the kitchen overlooks the rear garden and hosting fitted floor and wall mounted units. On the upper level you will find a three piece family bathroom consisting of WC, sink and bath with overhead shower and two well proportioned bedrooms.

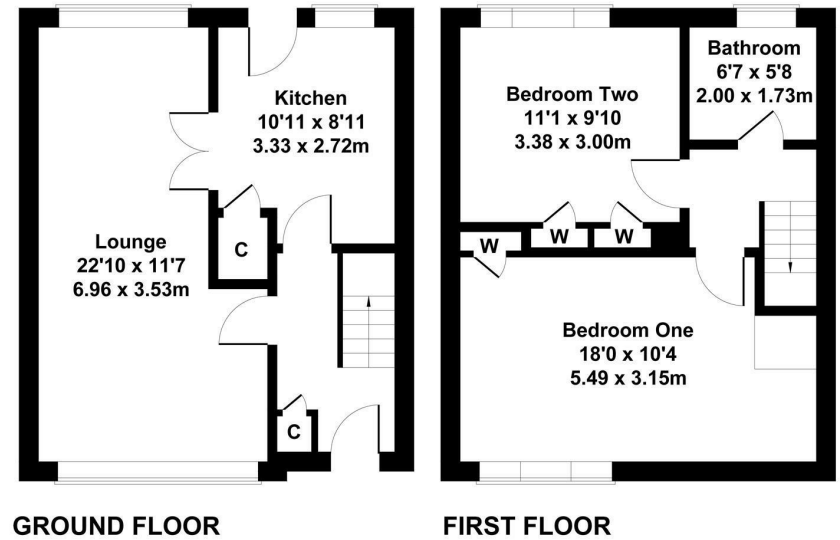
The property is further enhanced with gas central heating, double glazing, there is a front garden and the rear garden is fully enclosed.

The sought after area of Motherwell offers a great selection of bars, restaurants and leisure facilities. It is perfectly located for the commuter, with the M8 and M74 providing convenient access to the central belt. The town also offers excellent public transport, with train and bus services providing links to the surrounding areas.

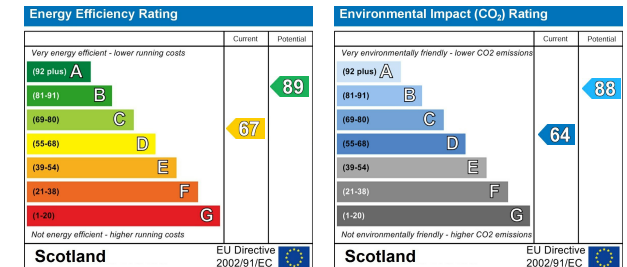
Viewing

Please contact us on 01698 305618 if you wish to arrange a viewing appointment for this property or require further information.

These particulars, whilst believed to be accurate are set out as a general outline only for guidance and do not constitute any part of an offer or contract. Intending purchasers should not rely on them as statements of representation of fact, but must satisfy themselves by inspection or otherwise as to their accuracy. No person in this firms employment has the authority to make or give any representation or warranty in respect of the property.



Energy Efficiency Graph



438 Brandon Street, Motherwell, North Lanarkshire, ML1 1XA
01698 305618 | info@fredestateagents.co.uk