

# Fred.

ESTATE AGENTS



**11 Old Meadow Walk**

Wishaw

**Offers over £189,995**



3



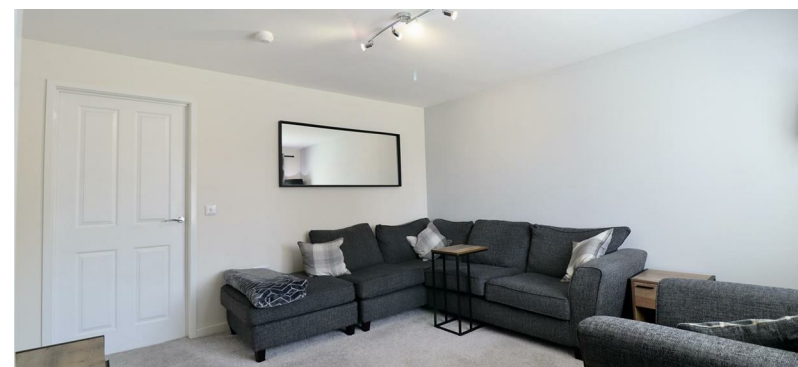
2

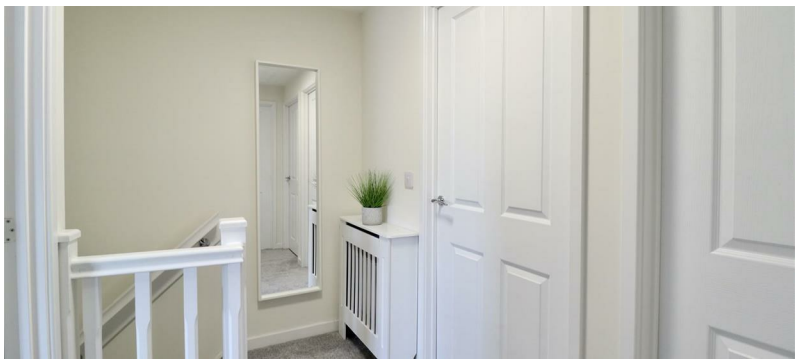


1



B



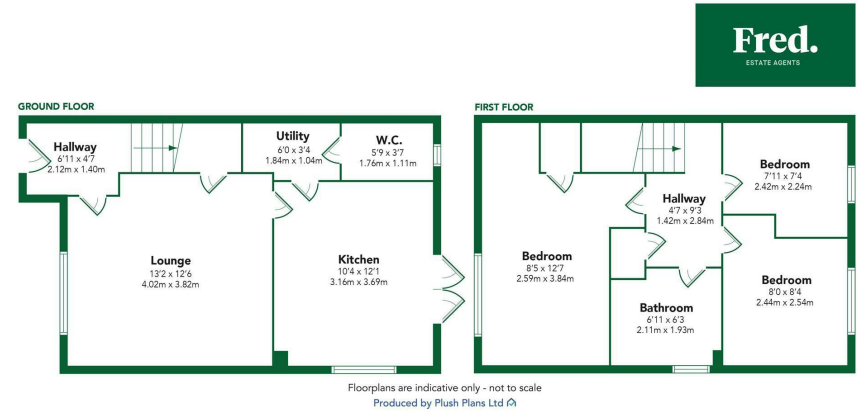


Situated within the highly regarded 'The Castings' development by Keepmoat Homes, lies this beautifully appointed and extremely spacious three bedroom semi detached property.

The ground floor of the property comprises of a welcoming entrance, a large and airy lounge with front facing window, a modern fully fitted dining kitchen with French doors leading out to the rear garden, separate utility area and a ground floor W.C. The upper floor consists of landing area, three bedrooms all of which are carpeted throughout and a stylish family bathroom.

The property offers private parking with a driveway to the side of the property and a generously sized rear garden which is fully enclosed and hosts a slabbed patio area.

Wishaw offers a great selection of shops, bars, restaurants and leisure facilities. It is perfectly located for the commuter, with the M74/M8 providing convenient access to the central belt. The town also offers excellent public transport, with train and bus services providing links to the surrounding areas.

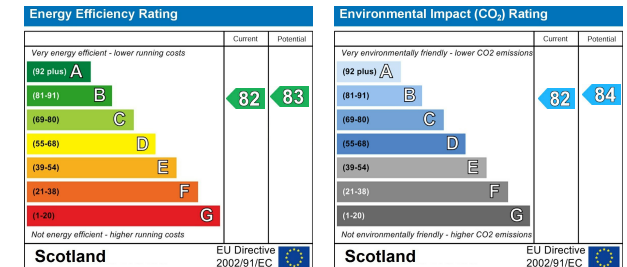


## Viewing

Please contact us on 01698 305618 if you wish to arrange a viewing appointment for this property or require further information.

These particulars, whilst believed to be accurate are set out as a general outline only for guidance and do not constitute any part of an offer or contract. Intending purchasers should not rely on them as statements of representation of fact, but must satisfy themselves by inspection or otherwise as to their accuracy. No person in this firms employment has the authority to make or give any representation or warranty in respect of the property.

## Energy Efficiency Graph



438 Brandon Street, Motherwell, North Lanarkshire, ML1 1XA  
01698 305618 | info@fredestateagents.co.uk