



challenger burgess
ESTATE AGENTS

Paper Mill Gardens, Portishead, Portishead, BS20 7RL

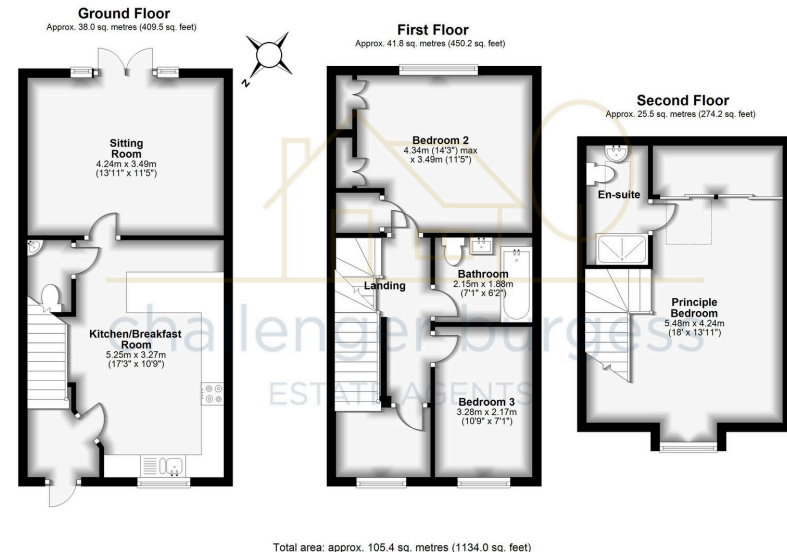
Guide Price £450,000

3 2 1



- Stylish Town House
- Three Bedrooms
- En-Suite Shower Room
- Driveway and Garage
- EPC Rating B
- Contemporary Re-Fitted Kitchen
- Stylish Galleried Principal Bedroom
- Show Home Condition
- Freehold - Council Tax Band D
- Viewing is a must





This simply stunning, three double bedroom town house is offered for sale in exceptional condition throughout, the stylish re-fitted open plan kitchen, vaulted principal bedroom, driveway and garage make this home very appealing. This home is well situated for local amenities with shops, schools and doctors surgery all close by, this property still has the remainder NHBC guarantee.

Score	Energy rating	Current	Potential
92+	A		92 A
81-91	B	91 B	
69-80	C		
55-68	D		
39-54	E		
21-38	F		
1-20	G		