



challenger burgess
ESTATE AGENTS

Sparrow Lane, Portishead, BS20 7FQ

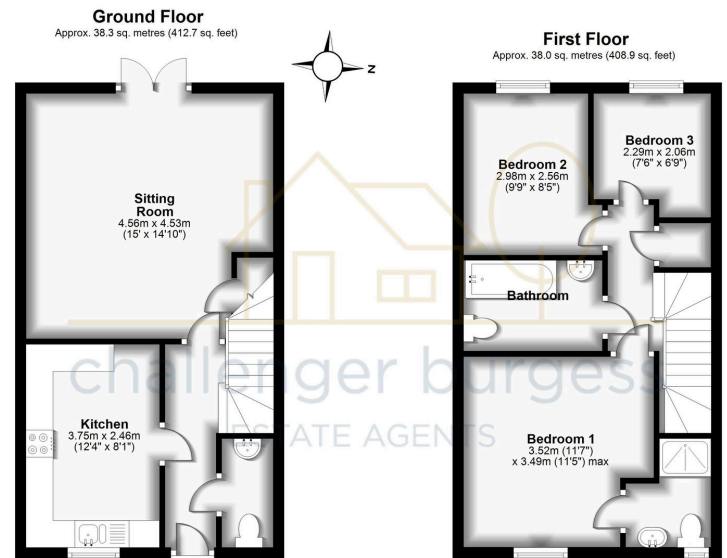
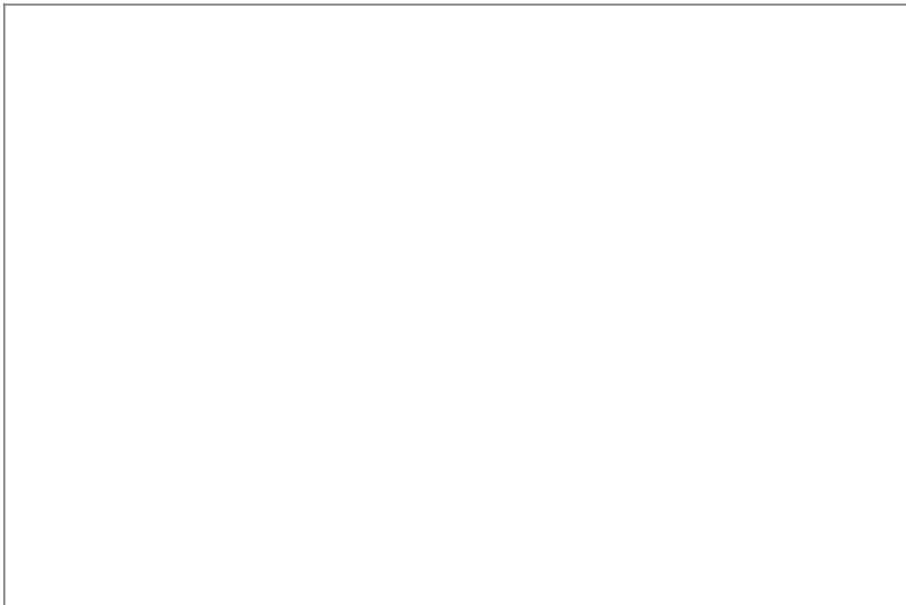
Guide Price £375,000

3 2 1



- Terraced home with Generous Garden
- Village Quarter Location
- Driveway and Single Garage
- Freehold
- Three Bedrooms
- En-Suite Shower Room
- Walking Distance to Nature Reserve
- Council Tax Band C





Total area: approx. 76.3 sq. metres (821.6 sq. feet)

This three bedroom terraced house, located in the highly sought-after Village Quarter, perfectly offers ample space and comfort for families, professionals, or those looking to downsize. This property is ideally situated in the catchment area for Trinity Primary School and Gordano Secondary School. Just a short walk away, you will find the Nature Reserve and Portishead's Marina with it's local amenities, coffee shops, bars and restaurants.

Score	Energy rating	Current	Potential
92+	A		93 A
81-91	B	81 B	
69-80	C		
55-68	D		
39-54	E		
21-38	F		
1-20	G		