

205 MODENA HOUSE

19 LYELL STREET, E14 0RQ

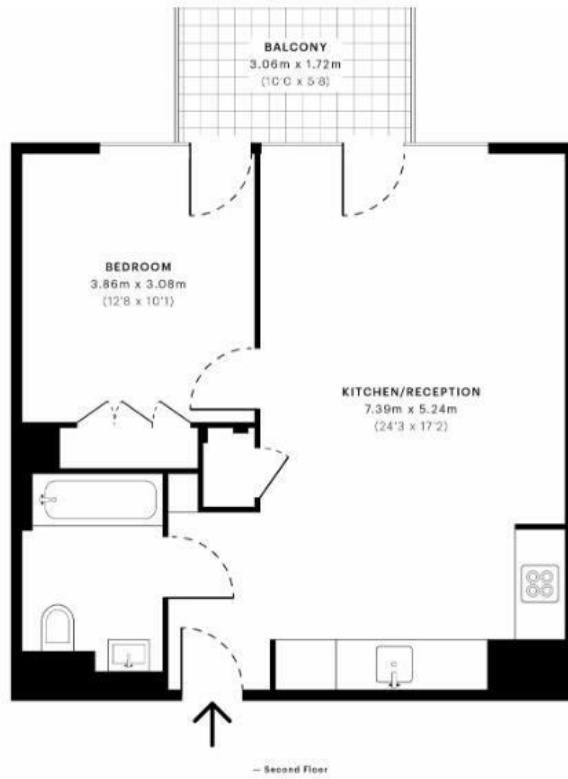
£410,000
LEASEHOLD

Situated within the hugely desirable London City Island development, this large, one bedroom apartment sits on the 2nd floor and comprises of an open plan kitchen living area, double bedroom with built in wardrobe space, a modern bathroom and a large private balcony area.

London City Island is situated just 0.1 miles from Canning Town Station, which access to both the Jubilee and the DLR, and offers a premium finish throughout and Manhattan loft-style aesthetic and is seen as one of the residential hotspots for creatives in East London.

Residents within London City Island have a range of amenities including a clubhouse, 24-hour concierge, gymnasium, spa and treatment rooms, a cinema screening room and swimming pool.

DouglasPryce

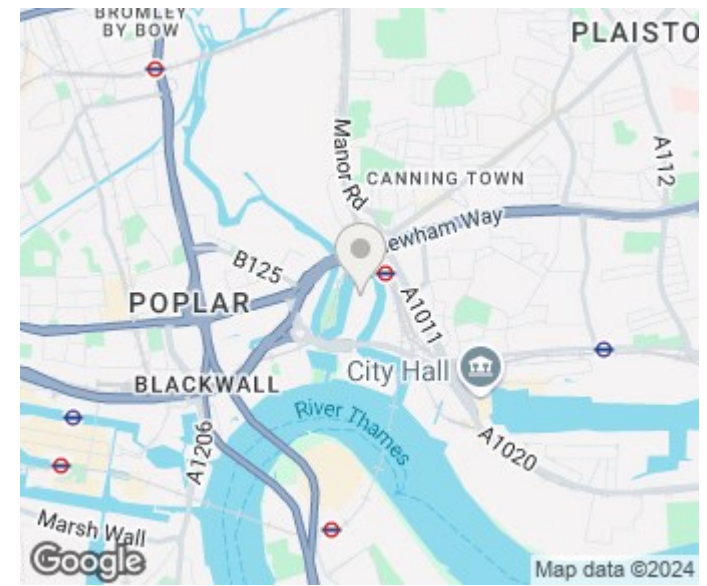


NET GROSS INTERNAL AREA (GIA)
The footprint of the property
51.84 sqm / 555.85 sqft

NET INTERNAL AREA (NIA)
Excludes walls and external fixtures
includes mezzanines, non-structural weight
49.25 sqm / 530.12 sqft

EXTERNAL STRUCTURAL FEATURES
Balconies, terraces, screens etc.
3.26 sqm / 35.62 sqft

RESTRICTED HEAD HEIGHT
Areas less than 2.00 m
0.00 sqm / 0.00 sqft



Energy Efficiency Rating		Current	Potential
Very energy efficient - lower running costs			
(92 plus) A			
(81-91) B			
(69-80) C			
(55-68) D			
(39-54) E			
(21-38) F			
(1-20) G			
Not energy efficient - higher running costs			
England & Wales		EU Directive 2002/91/EC	

Agents Note: Whilst every care has been taken to prepare these particulars, they are for guidance purposes only. All measurements are approximate and are for general guidance purposes only and whilst every care has been taken to ensure their accuracy, they should not be relied upon and potential buyers/tenants are advised to recheck the measurements

Lettings
Verdant Lane
London
SE6 1LF

07887933642
glenn@douglaspryce.co.uk
www.douglaspryce.co.uk

DouglasPryce