



3 BLYTHS WHARF LONDON, E14 8BF

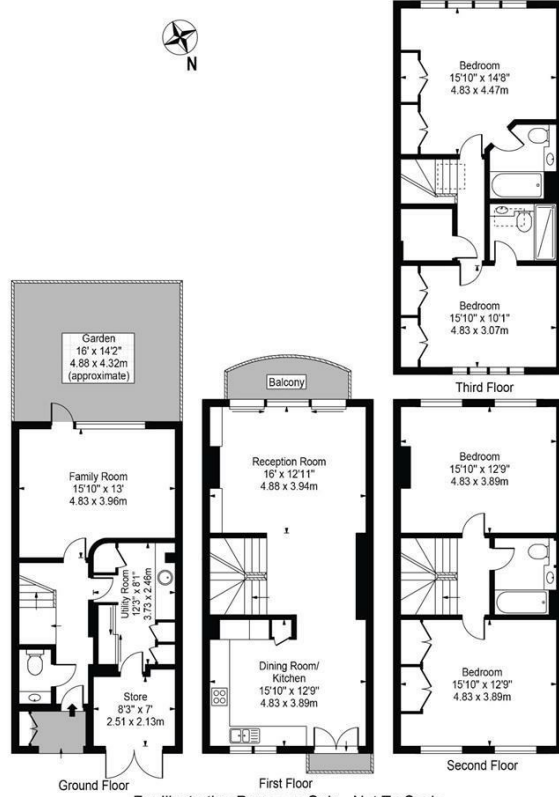
£2,000,000
FREEHOLD

Guide Price: £2,000,000 - £2,250,000. Nestled along the picturesque Narrow Street, Blyths Wharf epitomises the essence of luxurious riverside living in the heart of London. This exquisite five-bedroom residence presents breathtaking views of the River Thames, enhanced by a sun-drenched south-facing garden and secure parking within an exclusive gated community. Spanning four elegantly designed levels, the ground floor greets you with seamless access to a tranquil garden terrace, effortlessly merging indoor and outdoor living. This floor also includes a separate utility room, a convenient WC, and a garage, providing essential amenities that complement the serene waterside lifestyle.

Ascending to the first floor, you will discover a harmonious blend of sophistication and practicality. A spacious reception room extends onto a private balcony, offering panoramic river views, while the adjacent open-plan kitchen and dining area create an ideal setting for entertaining and culinary delights. The

DouglasPryce

Blyths Wharf
 Approx. Gross Internal Area 2126 Sq Ft - 197.51 Sq M



For Illustration Purposes Only - Not To Scale
 This floor plan should be used as a general outline for guidance only and does not constitute in whole or in part an offer or contract.



Energy Efficiency Rating		
	Current	Potential
Very energy efficient - lower running costs		
(92 plus) A		
(81-91) B		
(69-80) C		
(55-68) D		
(39-54) E		
(21-38) F		
(1-20) G		
Not energy efficient - higher running costs		
England & Wales	EU Directive 2002/91/EC	

Agents Note: Whilst every care has been taken to prepare these particulars, they are for guidance purposes only. All measurements are approximate and are for general guidance purposes only and whilst every care has been taken to ensure their accuracy, they should not be relied upon and potential buyers/tenants are advised to recheck the measurements

Sales
 Verdant Lane
 London
 SE6 1LF

07887933642
 glenn@douglaspryce.co.uk
 www.douglaspryce.co.uk

