



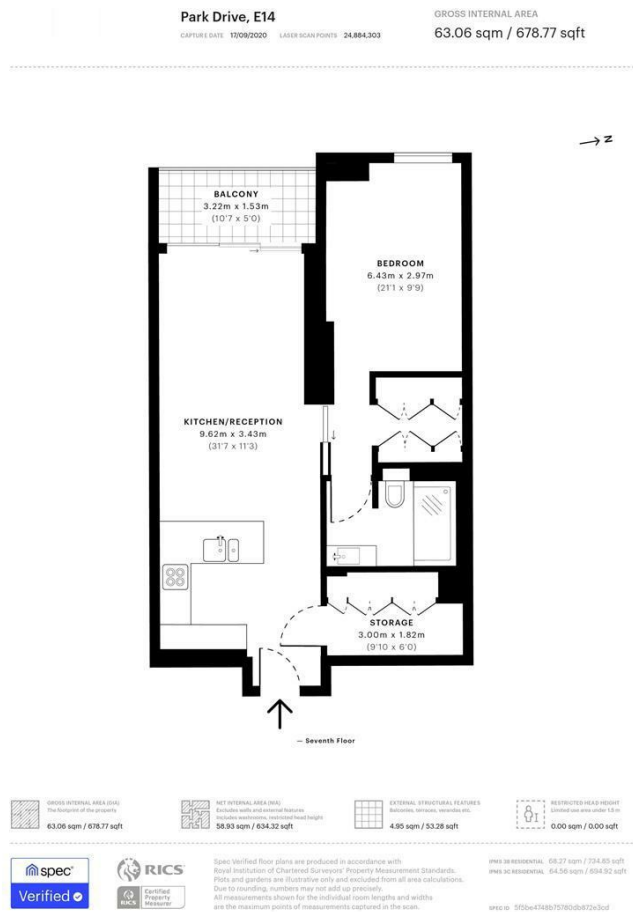
706 10 PARK DRIVE LONDON, E14 9GD

£3,200 PCM

This stunning 7th floor, dock facing, one bedroom apartment measures a huge 678 SQ FT of internal space and comes fully furnished and is situated within the brand new 10 Park Drive on the Wood Wharf estate. With a huge open plan living area, kitchen finished in a light oak with built-in Siemens appliances and a built-in wine cooler. The bathroom comes complete with large porcelain tiling, frameless glass shower screen, ceiling mounted shower and underfloor heating. The development is located in an area with an abundance of shops, cafes and restaurants.

10 Park drive benefits from 24hr Concierge and residents will have access to a 40,000 sq.ft health and fitness club offering state of art facilities including Gymnasium, Swimming pool, Jacuzzi, Sauna and Steam room. In addition to this the development benefits from a Private Residents Club and terrace offering stunning views towards the City and the Thames giving residents the perfect setting for high end living.

DouglasPryce



Energy Efficiency Rating		
	Current	Potential
Very energy efficient - lower running costs		
(92 plus) A		
(81-91) B		
(69-80) C		
(55-68) D		
(39-54) E		
(21-38) F		
(1-20) G		
Not energy efficient - higher running costs		
England & Wales		EU Directive 2002/91/EC

Agents Note: Whilst every care has been taken to prepare these particulars, they are for guidance purposes only. All measurements are approximate and are for general guidance purposes only and whilst every care has been taken to ensure their accuracy, they should not be relied upon and potential buyers/tenants are advised to recheck the measurements

Lettings
Verdant Lane
London
SE6 1LF

07887933642
glenn@douglaspryce.co.uk
www.douglaspryce.co.uk

DouglasPryce