



90 WHITECHAPEL HIGH STREET LONDON, E1 7RA

£2,650 PCM

Situated in one of London's most vibrant and well-connected locations, this superb third-floor flat presents an ideal opportunity for both professionals and students seeking stylish living with outstanding access to the City, major universities, and London's renowned business districts.

The apartment comprises a generously sized living area with an open-plan kitchen and dining space, designed to maximise both comfort and functionality. Large sash windows flood the interior with natural light, creating a bright and welcoming atmosphere throughout. Both bedrooms are spacious doubles, perfectly suited for sharers or couples requiring additional room. A standout feature of the property is the extensive hallway storage, offering floor-to-ceiling wardrobes that provide ample space for all your belongings.

DouglasPryce

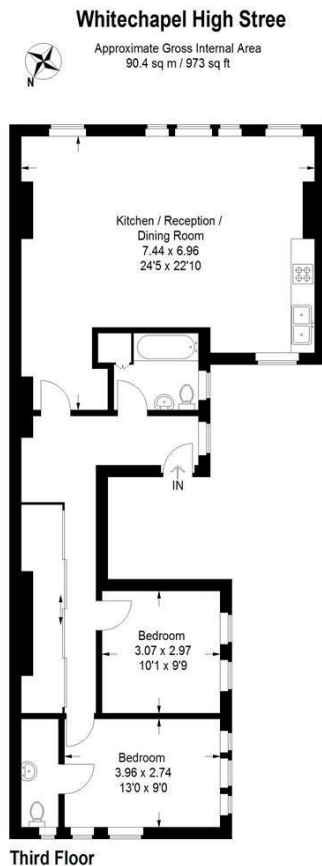
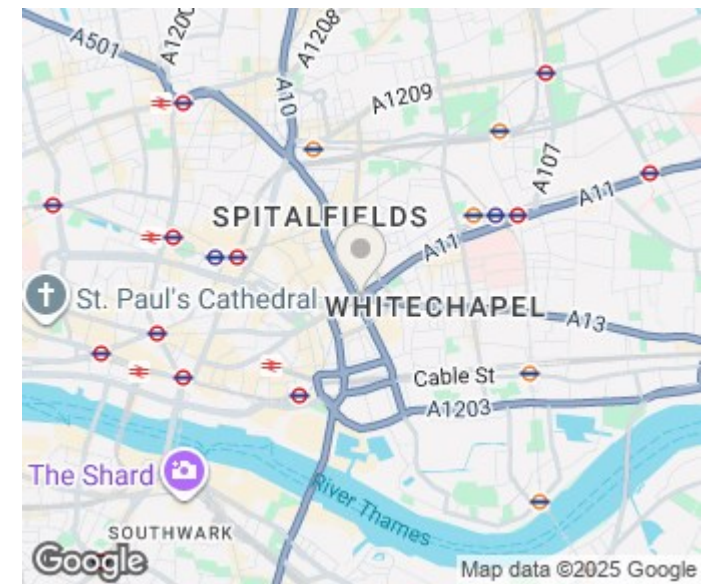


Illustration for identification purposes only,
measurements are approximate.



Energy Efficiency Rating		
	Current	Potential
Very energy efficient - lower running costs		
(92 plus) A		
(81-91) B		
(69-80) C		
(55-68) D		
(39-54) E		
(21-38) F		
(1-20) G		
Not energy efficient - higher running costs		
England & Wales	EU Directive 2002/91/EC	

Agents Note: Whilst every care has been taken to prepare these particulars, they are for guidance purposes only. All measurements are approximate and are for general guidance purposes only and whilst every care has been taken to ensure their accuracy, they should not be relied upon and potential buyers/tenants are advised to recheck the measurements

Lettings
Verdant Lane
London
SE6 1LF

07887933642
glenn@douglaspryce.co.uk
www.douglaspryce.co.uk

DouglasPryce