

## 24 DUNBAR WHARF LONDON, E14 8BB

**£2,750 PCM**

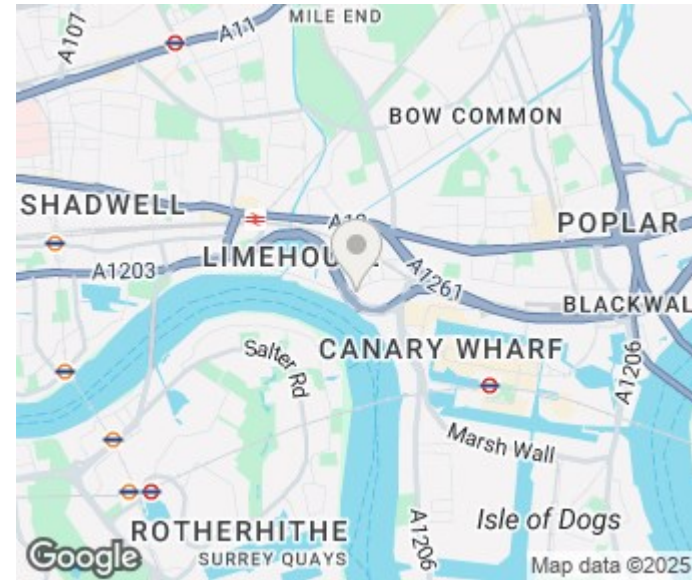
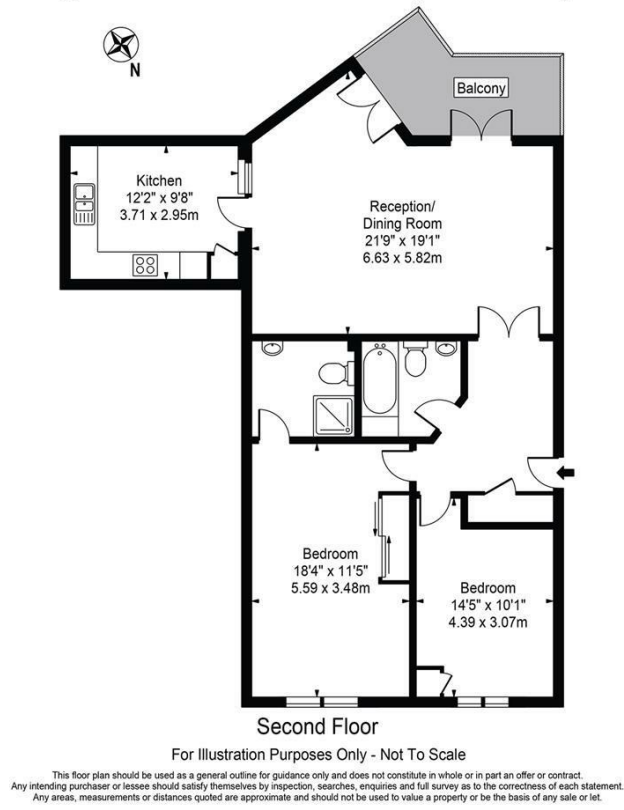
Boasting stunning views of the River Thames, this beautifully presented riverside apartment offers spacious and stylish living throughout. The property features a bright and expansive reception area that opens out onto a large private balcony—perfect for relaxing or entertaining with picturesque waterfront views. The generously sized master bedroom includes a modern en suite, complemented by a well-proportioned second bedroom and an additional sleek bathroom. A spacious kitchen with ample counter and storage space caters to both everyday living and entertaining. With elegant wood flooring, natural light flooding every room, and a sought-after riverside location, this is a rare opportunity to enjoy comfort, space, and scenic tranquility in one of the city's most desirable settings.


Nestled on the sought-after Wapping Wall, this stunning riverside apartment offers exceptional access to local amenities and transport links. Wapping Overground Station is just a short walk away, providing quick connections to the City via the East London Line, while Shadwell DLR and Overground stations

**DouglasPryce**

# Dunbar Wharf

Approx. Gross Internal Area 1049 Sq Ft - 97.46 Sq M



Energy Efficiency Rating		
	Current	Potential
Very energy efficient - lower running costs		
(92 plus) <b>A</b>		
(81-91) <b>B</b>		
(69-80) <b>C</b>		
(55-68) <b>D</b>		
(39-54) <b>E</b>		
(21-38) <b>F</b>		
(1-20) <b>G</b>		
Not energy efficient - higher running costs		
<b>England &amp; Wales</b>	EU Directive 2002/91/EC 	

Agents Note: Whilst every care has been taken to prepare these particulars, they are for guidance purposes only. All measurements are approximate and are for general guidance purposes only and whilst every care has been taken to ensure their accuracy, they should not be relied upon and potential buyers/tenants are advised to recheck the measurements

Lettings  
 Verdant Lane  
 London  
 SE6 1LF

07887933642  
 glenn@douglaspryce.co.uk  
 www.douglaspryce.co.uk

