



## FLAT 5 THE MET APARTMENTS LONDON, SE12 8RW

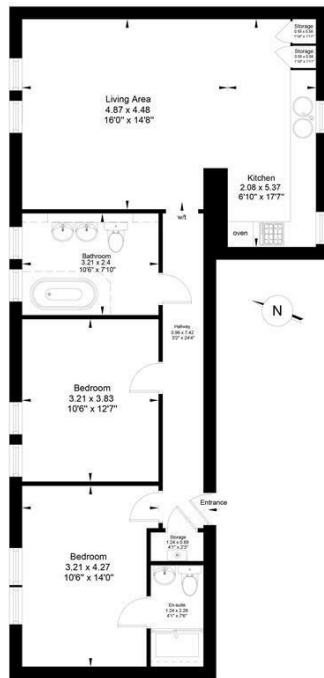
**£425,000**  
LEASEHOLD

This spacious two double bedroom, two bathroom apartment is set within an impressive and attractive Grade II listed converted Police Station. The property also benefits from gated off-street parking and is ideally located between Blackheath Village and Lee Station.

Situated on the first floor, the property benefits from two good-sized double bedrooms, one of which also with en-suite shower room, a large family bathroom and a huge open-plan living room and kitchen area. At 855 sq ft of internal space, the property has a large, free-flowing footprint and also has plenty of period features and ample storage throughout.

The Met Apartments is a Grade II listed development formed from the former Lee Police Station and is located in an enviable position between Blackheath

**DouglasPryce**

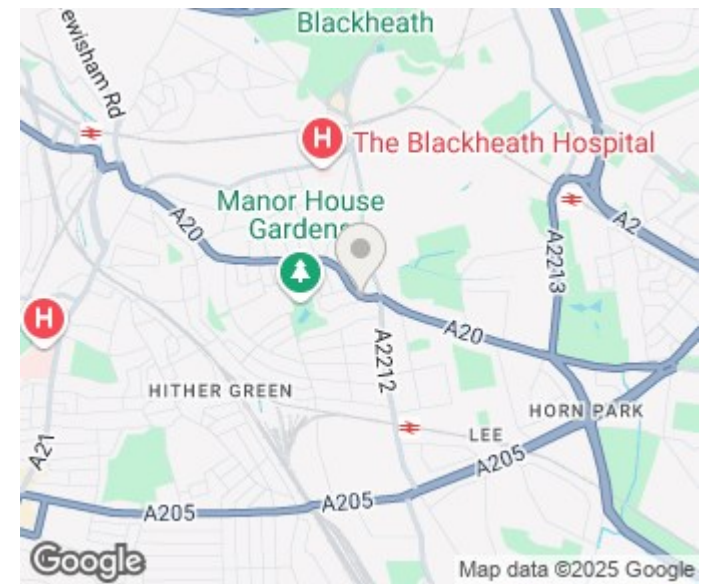


**First Floor Apartment**

Total Internal Area  
79.44m<sup>2</sup> (855.08 sq.ft.)

FOR ILLUSTRATIVE PURPOSES ONLY

Whilst every attempt has been made to ensure the accuracy  
of this floor plan contained here, we cannot take any  
responsibility for any errors.



Energy Efficiency Rating		
	Current	Potential
Very energy efficient - lower running costs		
(92 plus) <b>A</b>		
(81-91) <b>B</b>		
(69-80) <b>C</b>		
(55-68) <b>D</b>		
(39-54) <b>E</b>		
(21-38) <b>F</b>		
(1-20) <b>G</b>		
Not energy efficient - higher running costs		
<b>England &amp; Wales</b>	EU Directive 2002/91/EC	

Agents Note: Whilst every care has been taken to prepare these particulars, they are for guidance purposes only. All measurements are approximate and are for general guidance purposes only and whilst every care has been taken to ensure their accuracy, they should not be relied upon and potential buyers/tenants are advised to recheck the measurements

Sales  
Verdant Lane  
London  
SE6 1LF

07887933642  
glenn@douglaspryce.co.uk  
www.douglaspryce.co.uk

**DouglasPryce**