



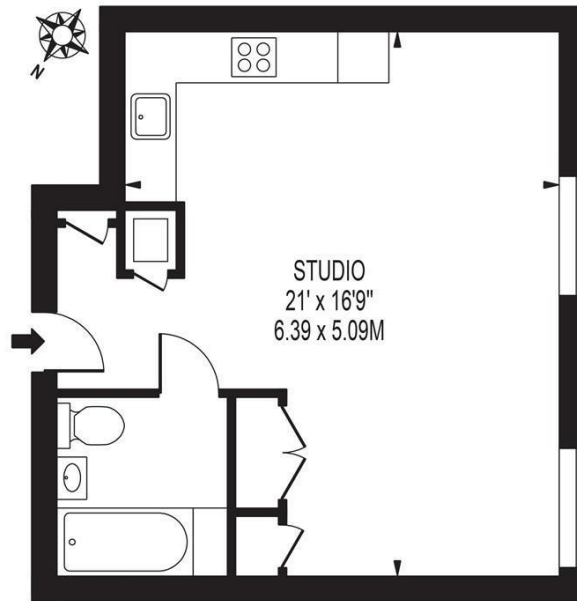
66 CORSAIR HOUSE LONDON, E16 2NY

£1,750 PCM

This 9th floor, furnished studio apartment is situated within Corsair House, complete with open-plan kitchen, large bedroom/lounge, large windows dotted throughout providing a light and airy feel. Pop downstairs to Starbucks and a Minutes walk shall take you to Pontoon Dock DLR Station. Forget what you've heard about London being a lonely city and become part of a community at Royal Wharf! Developed by Ballymore Homes, this iconic new development sits on the banks of the River Thames, offering incredible river views and easy access into Canary Wharf and the city. Travelling across London is a breeze, with Pontoon Dock station located just moments from the development. From here you can catch the DLR to Bank station and be on the underground in just 10 minutes. As well as easy travel, living at Royal Wharf has a lot of other perks which require no travel at all. You will be able to enjoy an on-site supermarket, coffee shop, pub, restaurants, parks and the 25,000 Sq Ft Clubhouse featuri

DouglasPryce

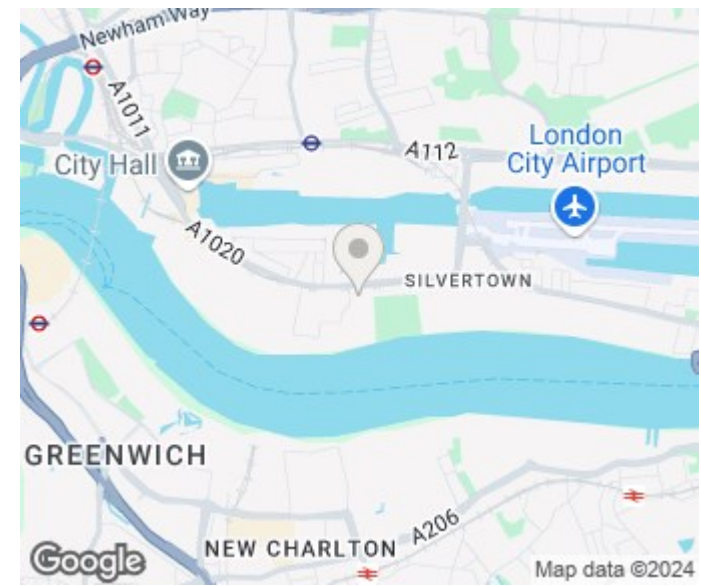
Corsair House, Royal Wharf, E16
8th Floor



FOR ILLUSTRATION PURPOSES ONLY

THIS FLOOR PLAN SHOULD BE USED AS A GENERAL OUTLINE FOR GUIDANCE ONLY AND DOES NOT CONSTITUTE IN WHOLE OR IN PART AN OFFER OR CONTRACT. ANY INTENDING PURCHASER OR LESSEE SHOULD SATISFY THEMSELVES BY INSPECTION, SEARCHES, ENQUIRIES AND FULL SURVEY AS TO THE CORRECTNESS OF EACH STATEMENT. ANY AREAS, MEASUREMENTS OR DISTANCES QUOTED ARE APPROXIMATE AND SHOULD NOT BE USED TO VALUE A PROPERTY OR BE THE BASIS OF ANY SALE OR LET.

Approximate Internal Square Footage: 388 SQFT (36 SQ M)



Energy Efficiency Rating		Current	Potential
Very energy efficient - lower running costs			
(92 plus) A			
(81-91) B			
(69-80) C			
(55-68) D			
(39-54) E			
(21-38) F			
(1-20) G			
Not energy efficient - higher running costs			
England & Wales		EU Directive 2002/91/EC	

Agents Note: Whilst every care has been taken to prepare these particulars, they are for guidance purposes only. All measurements are approximate and are for general guidance purposes only and whilst every care has been taken to ensure their accuracy, they should not be relied upon and potential buyers/tenants are advised to recheck the measurements

Lettings
Verdant Lane
London
SE6 1LF

07887933642
glenn@douglaspryce.co.uk
www.douglaspryce.co.uk

DouglasPryce