

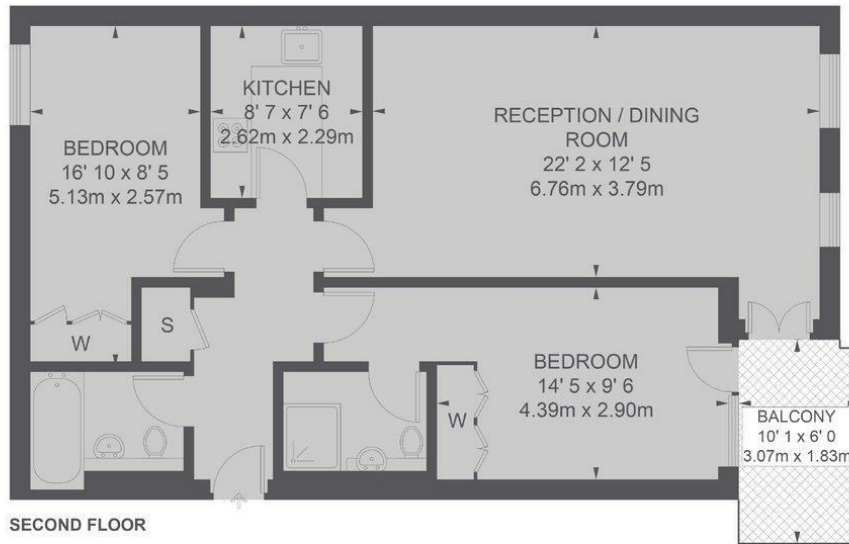


12 PERRY COURT LONDON, E14 3QE

£2,250 PCM

A bright and airy two bedroom, two bathroom apartment situated on the second floor of this sought after riverside development. The apartment benefits from two large double bedrooms, an open plan reception room, wooden flooring and a private balcony with amazing river views. Perry Court is within walking distance of Mudchute DLR, Mudchute Park, the Greenwich Foot Tunnel and the Napier Avenue river bus stop.

DouglasPryce



TOTAL APPROX. FLOOR AREA 842 SQ. FT. (78.2 SQ. M.)
 TOTAL APPROX. BALCONY AREA 60 SQ. FT. (5.6 SQ. M.)



Energy Efficiency Rating		
	Current	Potential
Very energy efficient - lower running costs		
(92 plus) A		
(81-91) B		
(69-80) C		
(55-68) D		
(39-54) E		
(21-38) F		
(1-20) G		
Not energy efficient - higher running costs		
England & Wales	EU Directive 2002/91/EC	

Agents Note: Whilst every care has been taken to prepare these particulars, they are for guidance purposes only. All measurements are approximate and are for general guidance purposes only and whilst every care has been taken to ensure their accuracy, they should not be relied upon and potential buyers/tenants are advised to recheck the measurements

Lettings
 Verdant Lane
 London
 SE6 1LF

07887933642
 glenn@douglaspryce.co.uk
 www.douglaspryce.co.uk

DouglasPryce