



FLAT 16 FINDLAY HOUSE

LONDON, E3 3GD

£425,000
LEASEHOLD

Situated in the third floor of this modern, private residential development is this stunning two bedroom/two bathroom property. With it's own, large private terrace, with stunning views and with over 711 SQ FT of internal space, this two bedroom, two and is located in the heart of Bow.

Located just 0.2 miles from Bow Road Underground Station, the property benefits from a large open plan living space with a modern open plan integrated kitchen. There is a spacious corridor which has two large double bedrooms off of it and both have plenty of storage space and the master bedroom also has an en-suite bathroom. There is also an additional well-sized, modern family bathroom as well.

Findlay House is just a short walk to the local underground and Bow Church DLR stations allowing easy access into the city and Canary Wharf, as well as

DouglasPryce

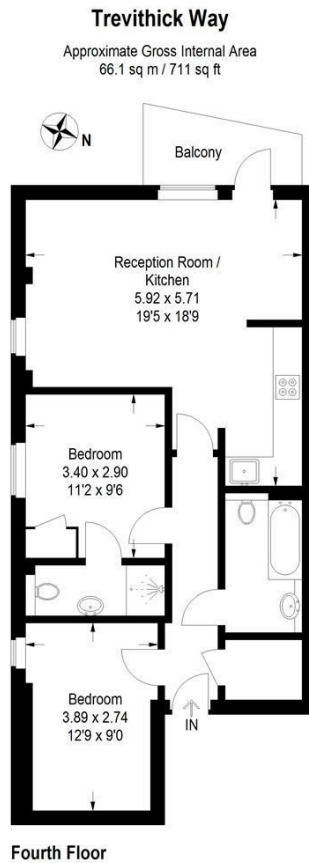
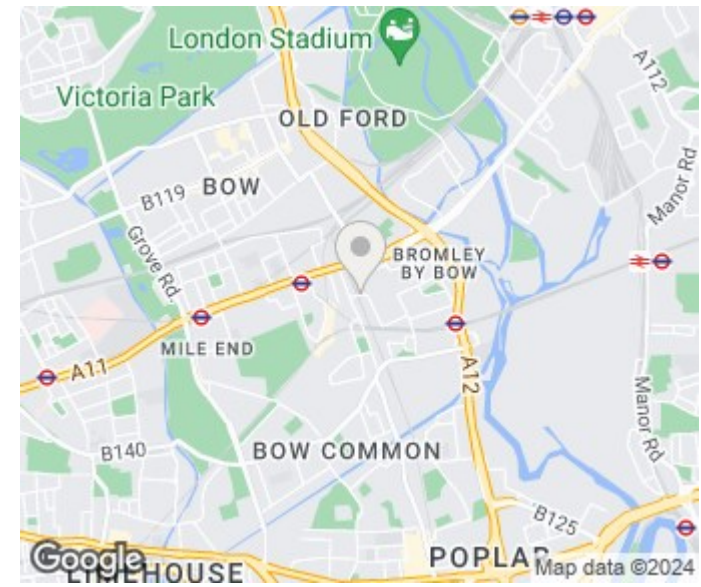


Illustration for identification purposes only,
 measurements are approximate.



Energy Efficiency Rating		
	Current	Potential
Very energy efficient - lower running costs		
(92 plus) A		
(81-91) B		
(69-80) C		
(55-68) D		
(39-54) E		
(21-38) F		
(1-20) G		
Not energy efficient - higher running costs		
England & Wales	EU Directive 2002/91/EC	

Agents Note: Whilst every care has been taken to prepare these particulars, they are for guidance purposes only. All measurements are approximate and are for general guidance purposes only and whilst every care has been taken to ensure their accuracy, they should not be relied upon and potential buyers/tenants are advised to recheck the measurements

Sales
 Verdant Lane
 London
 SE6 1LF

07887933642
 glenn@douglaspryce.co.uk
 www.douglaspryce.co.uk

DouglasPryce