



Richmond Park Road, Kingston Upon Thames, KT2 6AQ

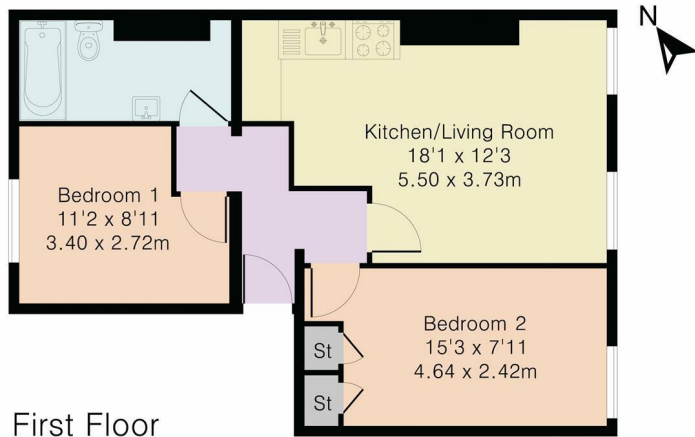
Asking price £375,000

 2  1  1  C



## Floor Plan

Approximate Gross Internal Area 516 sq ft - 48 sq m



PINK PLAN

Although Pink Plan Ltd ensures the highest level of accuracy, measurements of doors, windows and rooms are approximate and no responsibility is taken for error, omission or misstatement. These plans are for representation purposes only as defined by RICS code of measuring practice. No guarantee is given on total square footage of the property within this plan. The figure icon is for initial guidance only and should not be relied on as a basis of valuation.



HARRISON JACKS

## Area Map



139 Kings Road  
Kingston Upon Thames  
Surrey KT2 5JE



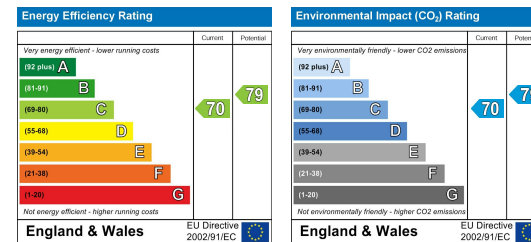
## Accommodation

- 2 Bedroom Flat
- EPC - C
- Newly decorated
- Prime KT2 location
- Convenient for River Thames and Kingston town centre
- Close to Royal Richmond Park
- Catchment area for brilliant local schools
- Perfect investment opportunity

## Viewing

Please contact us on 020 3325 4515 if you wish to arrange a viewing appointment for this property or require further information.

## Energy Efficiency Graph



These particulars, whilst believed to be accurate are set out as a general outline only for guidance and do not constitute any part of an offer or contract. Intending purchasers should not rely on them as statements of representation of fact, but must satisfy themselves by inspection or otherwise as to their accuracy. No person in this firm's employment has the authority to make or give any representation or warranty in respect of the property.



020 3325 4515  
sales@harrisonjacks.co.uk  
www.harrisonjacks.co.uk

