

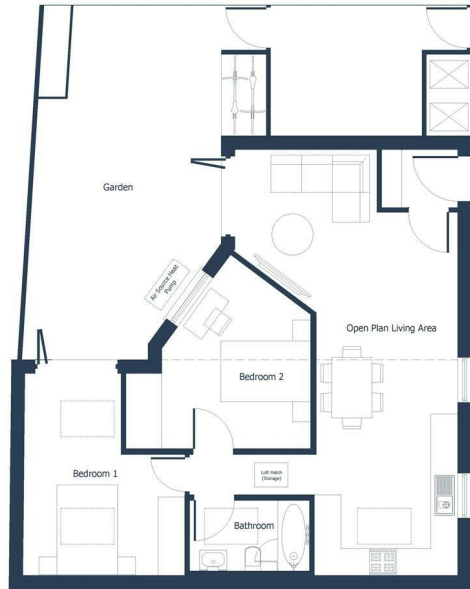


Burlington Road, New Malden, KT3 4NU

Asking price £625,000



Floor Plan



HARRISON JACKS

50a Burlington Road,
2 Bedroom Property
Approximate Gross Internal Area 72m² (775ft²)
Floorplans shown for Harrison Jacks are for illustration purposes only as defined by BS53 Code of Measuring Practice and should be used as such by any prospective purchaser. No guarantee is made to the total square footage of this property if quoted on this plan. Any figure given is for initial guidance only. Not to scale.

Area Map



139 Kings Road
Kingston Upon Thames
Surrey KT2 5JE



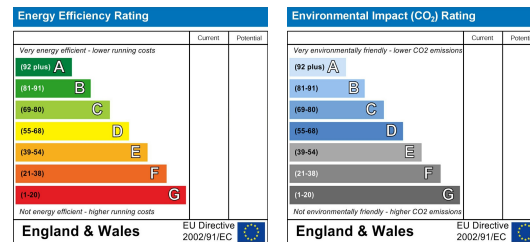
Accommodation

- 2 Bedroom Detached Single Storey Home
- Patio Garden
- Bi-folding Doors
- Underfloor Heating
- Bike storage
- Energy efficient home
- Air source heat pump
- Secure gated entrance
- 10 Year New Build Insurance Backed Warranty
- Prime location for New Malden station and local high street

Viewing

Please contact us on 020 3325 4515 if you wish to arrange a viewing appointment for this property or require further information.

Energy Efficiency Graph



These particulars, whilst believed to be accurate are set out as a general outline only for guidance and do not constitute any part of an offer or contract. Intending purchasers should not rely on them as statements of representation of fact, but must satisfy themselves by inspection or otherwise as to their accuracy. No person in this firm's employment has the authority to make or give any representation or warranty in respect of the property.



020 3325 4515

sales@harrisonjacks.co.uk

www.harrisonjacks.co.uk

rightmove Zoopla.co.uk

