

JACKS

YOUR AWARD WINNING AGENT

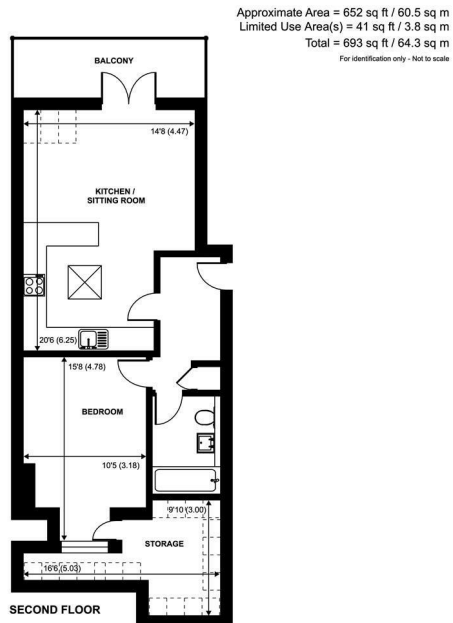


Richmond Road, Kingston Upon Thames, KT2 5BX

£375,000



Floor Plan



Floor plan produced in accordance with RICS Property Measurement Standards incorporating International Property Measurement Standards (IPMS2 Residential). © richrecom 2022.

Area Map



139 Kings Road
 Kingston Upon Thames
 Surrey KT2 5JE



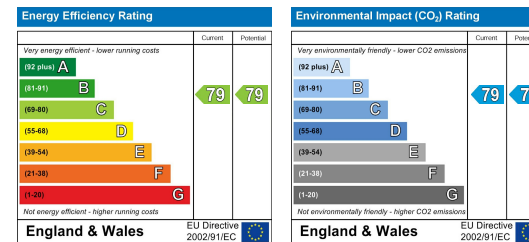
Accommodation

- South Facing Sun Terrace
- Underfloor Heating
- Breakfast Bar
- Skylight
- Air Conditioning
- Leasehold
- Adjacent to River Road
- Prime KT2 North Kingston Location
- Close to Richmond Park/River Thames
- EPC - C

Viewing

Please contact us on 020 3325 4515 if you wish to arrange a viewing appointment for this property or require further information.

Energy Efficiency Graph



These particulars, whilst believed to be accurate are set out as a general outline only for guidance and do not constitute any part of an offer or contract. Intending purchasers should not rely on them as statements of representation of fact, but must satisfy themselves by inspection or otherwise as to their accuracy. No person in this firm's employment has the authority to make or give any representation or warranty in respect of the property.

020 3325 4515
 sales@harrisonjacks.co.uk
 www.harrisonjacks.co.uk

