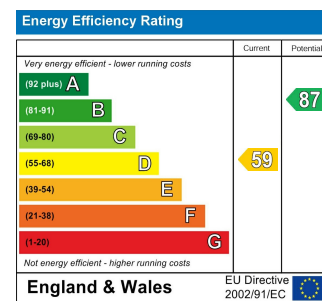
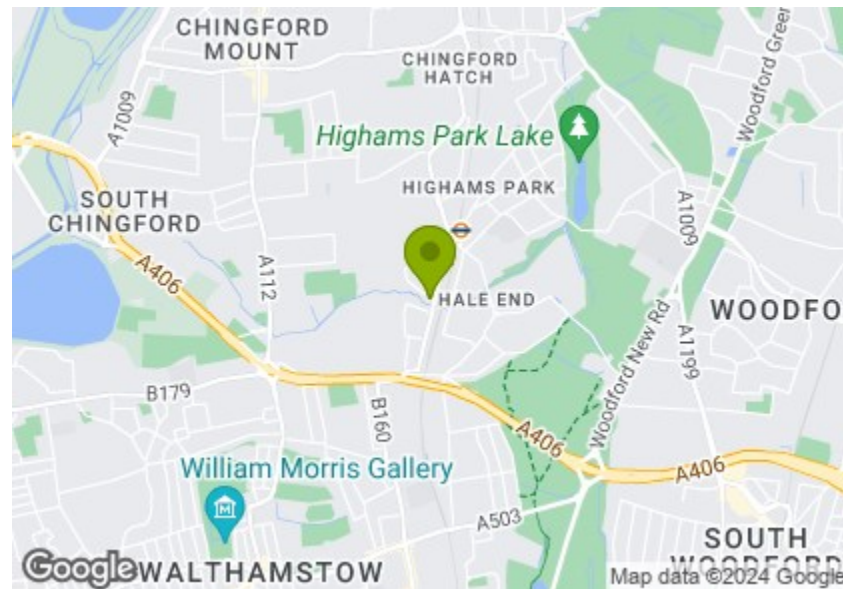




Total Area: 110.2 m² ... 1186 ft² (excluding shed, eaves storage)
All measurements are approximate and for display purposes only.



HALDAN ROAD, HIGHAMS PARK

Offers In Excess Of £750,000 Freehold

4 Bed House - Mid Terrace



Features:

- Four Bedroom House
- Mid Terrace Edwardian
- Short Walk to Epping Forest
- Approx 1186 Square Foot
- Potential To Extend (STPP)
- Moments From Highams Park Station
- Two Bathrooms
- Circa 80 Foot South Facing Garden

A handsome four bedroom, twin bathroom mid terrace home, this beautiful abode sits close to Highams Park Station. You have 1200 square feet of elegant space with a South-facing sun-trap of a garden to the rear.

Nestling in sought-after Highams Park, minutes from Epping Forest, this gem promises any number of flexible living arrangements with cultural and culinary delights close by to appeal to busy urbanites and nature lovers alike.

REQUEST A VIEWING
0203 369 6444

E11, E7, E12 & E15
hello11@stowbrothers.com
0203 397 2222

E4 & N17
hello4@stowbrothers.com
0203 369 6444

E17 & E10
hello17@stowbrothers.com
0203 397 9797

E18 & IG8
hello18@stowbrothers.com
0203 369 1818

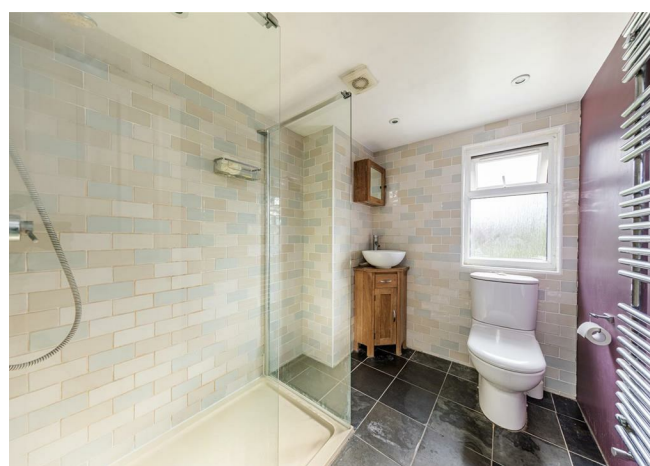
E8, E9, E5, N16, E3 & E2
hellohackney@stowbrothers.com
0208 520 3077

New Homes
newhomes@stowbrothers.com
0203 325 7227

Investment & Development
id@stowbrothers.com
0208 520 6220

Property Maintenance
propertymanagement@stowbrothers.com
0203 325 7228

STOWBROTHERS.COM
@STOWBROTHERS



IF YOU LIVED HERE...

You'll be delighted stepping into your naturally bright hallway, and through to your glorious 245 square foot double reception. Here generous sash windows pour natural light across a serene scene comprising an original cast iron fireplace and heavenly honey hued timber floorboards. Your airy dining area invites you through glazed French doors to your magnificent garden. In your splendid kitchen, pale blue units are topped by an oak worktop for a high-end look.

On your first floor are three beautifully presented bedrooms in rich jewelled tones. The first pair of sleepers feature a wealth of dedicated storage, while the third could be a nursery or bespoke dressing room. In your bathroom your tub rests beneath a stylish shower, while a crisp white suite and striking black and white floor evokes the Victorian origins of this splendid sanctuary. Your master bedroom is upstairs with heaps of storage alongside a gleaming shower room.

Your new locale of Highams Park has destination cafe culture and

picturesque woodland, all sitting within a sociable spot with a warm community feel. Highams Park itself is ten minutes on foot, perfect for a morning jog or blowing the cobwebs away on a stroll. Here you have dazzling views across London and, of course, the famous Highams Park Lake. Treat yourself to tea and scones at beloved local landmark Humphry's Cafe, and bird-watch on the waters.

WHAT ELSE?

- An incredible five minutes on foot sees you to Highams Park station, where regular Overground trains will take you to Walthamstow Central for the Victoria Line in five minutes, or to Liverpool Street in another twenty. Drivers, can be on the North Circular in three minutes.
- Your new local the Stag & Lantern is extremely local, being two minutes away. Listen to live music while sampling scrumptious cask ales.
- Parents have a choice of sixteen 'Good and 'Outstanding' schools all lying within a mile. In fact, the outstanding Selwyn Primary School is at the end of the road.



A WORD FROM THE OWNER...

"Living here we've always felt it had the good points of London - close to transport, bars and restaurants - but this spot doesn't really feel like London. There's a beautiful line of big, old trees along the side of the River Ching which is at the bottom of the garden. You'll occasionally see a Little Egret rising up from the river and there's lots of wood pigeons and birdsong generally. We've spent a lot of time getting the garden just right. The apple tree produces lots of fruit and we've grown a cherry tree. In July and August the dog rose has a multitude of bright pink flowers.

The house itself is an Edwardian gem, with two original fireplaces, the original timber floors, cornicing, front door and garden doors. It's always full of light. We'll miss the great running routes alongside the Ching all the way up to Chingford Plain, and all the places you can get a good sourdough now, and definitely Vinoramica. And the park itself of course!"

REQUEST A VIEWING
0203 369 6444

FOLLOW US → @STOWBROTHERS
STOWBROTHERS.COM



REQUEST A VIEWING
0203 369 6444

FOLLOW US → @STOWBROTHERS
STOWBROTHERS.COM



Reception Room

12'7" x 12'0"

Reception Room

11'0" x 9'6"

Kitchen

12'9" x 7'9"

WC

Bedroom

7'6" x 6'9"

Bedroom

12'7" x 10'5"

Bedroom

11'0" x 10'5"

Bathroom

Bedroom

16'8" x 10'5"

Eaves Storage

Shower Room

6'6" x 6'5"

Garden

78'8"

Shed

10'10" x 10'10"

REQUEST A VIEWING
0203 369 6444



FOLLOW US → @STOWBROTHERS
STOWBROTHERS.COM