



RESIDENCE

10 Wallace Court, Lanark, ML11 7LL

www.residenceestateagents.co.uk



2 Bedrooms | 1 Public Rooms | 1 Bathrooms

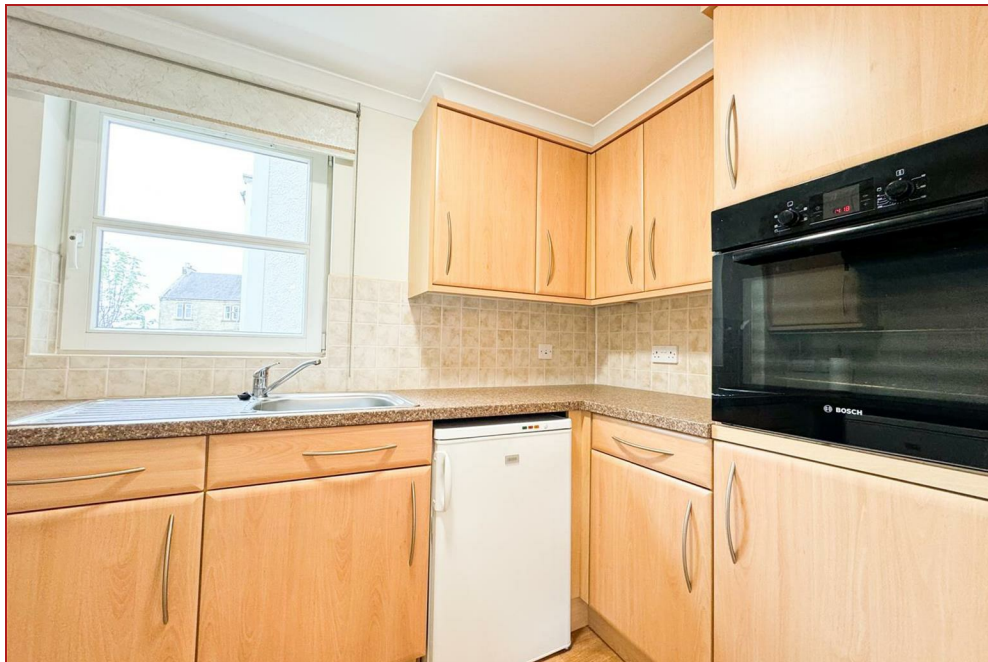
Beautifully presented and rarely available is this ground floor, two-bedroom retirement apartment in the ever popular McCarthy & Stone development at Wallace Court. The property is situated in the heart of Lanark and is just a short walk to all local amenities.

The property comprises, large entrance hallway with two fantastic storage cupboards, a very spacious lounge with large bay window and a floor to ceiling window allowing excellent light flow through the apartment. The kitchen has a variety of base and wall mounted units with Bosch single oven and electric hob. There is two excellent double bedrooms, one has a large free-standing wardrobe and the other a fitted wardrobe, completing the property is the lovely shower room with W.C, wash hand basin and walk in shower.

The complex at Wallace Court has private parking for residents on arrival, security entrance, alarm system, house manager, residents lounge, emergency call system, lift to all floors and a shared laundry room.

The property benefits from electric central heating, emergency response cords which connect immediately to the care line in every room and double glazed windows are installed throughout.

The Royal Burgh of Lanark has a wide range of modern schools, retail park, healthcare, Tesco, Morrison and Lidl supermarkets along with a wide range of local shops. A large recreational facility with gym and swimming pool. The well-known New Lanark world heritage centre, Lanark golf course and Lanark Loch are all within close proximity. Lanark is much favoured particularly for those requiring good transport links with the nearby Lanark station providing regular services to Glasgow/Edinburgh and the M74 motorway is a short drive.



731.95 sq ft | EER = C

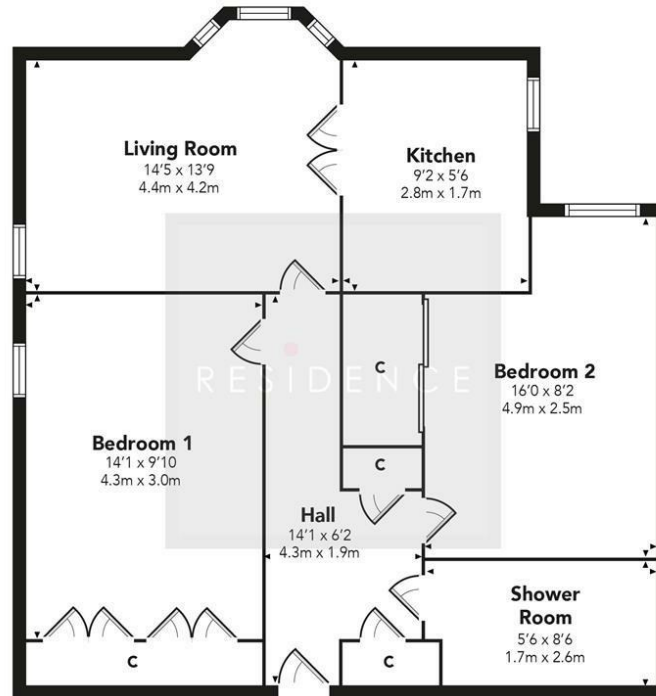


RESIDENCE



Viewing by appointment with Residence Lanark
T: 01555 467222 | E: | A: 68-70 High Street, Lanark, ML1 1 7ES

Wallace Court



Floor Plan measurements are approximate and are for illustrative purposes only. While we do not doubt the floor plans accuracy, we make no guarantee, warranty or representation as to the accuracy and completeness of the floor plan. You or your advisors should conduct a careful, independent investigation of the property to determine to your satisfaction as to the suitability of the property for your space requirements.

Produced by Plush Plans Ltd

We believe these details to be accurate; however, they do not form any part of a contract. Fixtures and fittings are not included unless specified in the enclosed. Photographs are for general information and it must not be inferred that any item is included for sale with the property. All distances and measurements are approximate. Floorplans may not be to scale and are for illustration purposes only.