



Tregaron Trenoweth, Penryn, TR10 9JH

£1,100,000

 6
  4
  1
  C

- Exquisite contemporary country home
- South facing mature gardens with extensive sun decking
- Solar panels, car charging port and a biomass boiler
- Panoramic countryside and sea views
- Parking for multiple vehicles
- Stunning family home or successful holiday let
- Grand master bedroom suite with beautiful views and generous dressing room
- Large garage/workshop providing versatile storage solutions
- No onward chain

A wonderful 6 bedroom family home, Tregaron enjoys breath-taking panoramic views, spanning Falmouth Bay to the Lizard Peninsula. Situated within easy reach of the picturesque Helford River and the vibrant, historic harbour town of Falmouth.

Spanning over 3,468 sq ft, Tregaron has been significantly extended and fully refurbished over recent years, taking full advantage of its elevated position to offer incredible views from almost every window. Flooded with natural light, the main house boasts spacious open plan living, cleverly designed to connect you with the outdoors and ever changing coastal views; whilst simultaneously providing a restful and luxuriously peaceful retreat.

Inviting and welcoming, the contemporary open plan living leads out onto sun decks which wrap around the south and west aspects of the property, perfect for alfresco dining and entertaining. There are six beautifully designed bedrooms including a fantastic master suite; 4 bathrooms, and an integral garage which provides space for boat storage or workshop space.

Ample parking is available for multiple vehicles to the front of the property and mature, well stocked gardens offer year round colour and interest.

Currently marketed with Creek & Country as a holiday let for summer 2025, no onward chain.

Additional land and building available by separate negotiation.

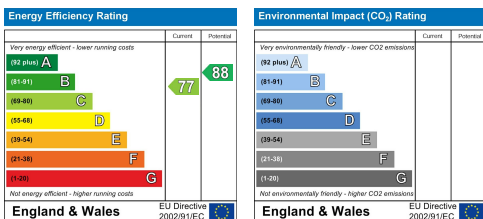
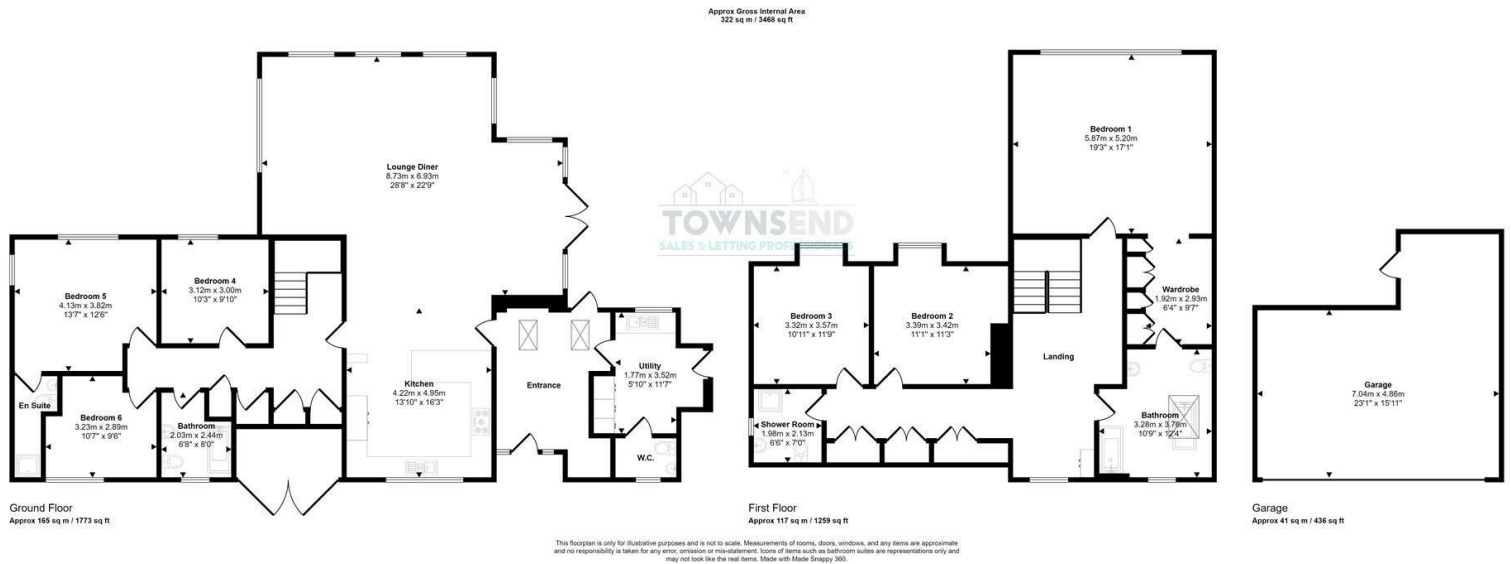
DISCLAIMER: In accordance with Section 21 of the Estate Agent Act 1979, there is a personal interest in this property's sale. The property is owned by a director of Townsends.



Directions

From Truro, take the A39 to Falmouth, then at Treliever Roundabout go straight over the first roundabout, take the exit for Mabe Burnthouse on the second roundabout, drive through Mabe Burnthouse via Treliever Road and Church Road, just as Church Road veers to the left, take the 1st right hand turn and Tregaron and The Neyth are the first turning on the left.





These particulars, whilst believed to be accurate are set out as a general outline only for guidance and do not constitute any part of an offer or contract. Intending purchasers should not rely on them as statements of representation of fact, but must satisfy themselves by inspection or otherwise as to their accuracy. No person in this firm's employment has the authority to make or give any representation or warranty in respect of the property.