



Penmere House, Millefleurs Boslowick Road, Falmouth, TR11 4EZ

Nestled in prime position on the Millefleurs estate, off Boslowick Road in Falmouth, this property presents a unique opportunity to restore a grand residence to its former glory and offers considerable potential for further enhancement to create a truly special home.

Spanning an impressive 156 square metres, the bungalow's design was inspired by South African Cape Dutch architecture and boasts a most unusual layout comprising an entrance leading to two separate wings with generously proportioned rooms. The rooms benefit from high ceilings and original features providing a glimpse into the property's glorious past, with substantial scope for a creative vision.

The accommodation briefly comprises:

From the entrance leading on the left there are 2 generously sized reception rooms, a conservatory, a master bedroom and a bathroom.

From the entrance leading to the right there are 2 double bedrooms, a single bedroom, shower room, kitchen with a rear porch and a storeroom.

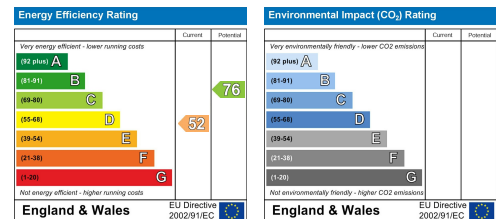
Externally there is a detached garage, a driveway for multiple cars and a wonderful private garden with mature plants, trees and shrubs surrounded by paths showing the way as well as an enclosed lawn area overlooked by the conservatory.

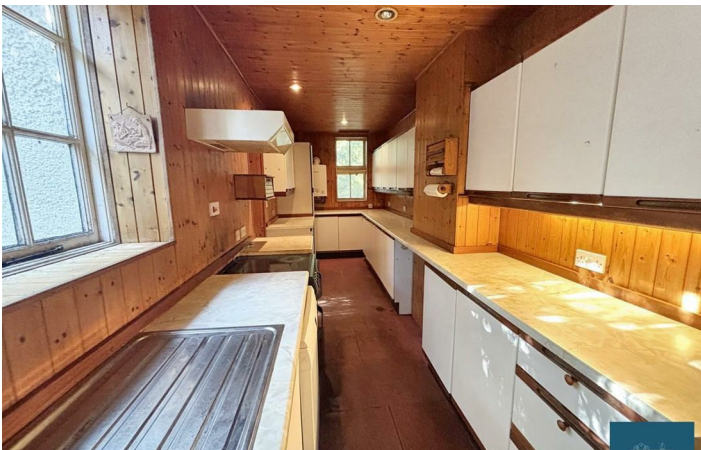
The bungalow is set in peaceful mature private gardens within a tranquil location, occupying a substantial 0.35-acre plot that offers ample outdoor space.

While the property requires full refurbishment, it offers a blank canvas for potential buyers to design their dream home, whether you wish to maintain the traditional layout or modernise it to suit contemporary tastes.

This hidden gem, is perfect for those who value privacy and a peaceful environment while still being within reach of Falmouth's vibrant community and stunning coastal scenery.

Situated close to Falmouth Town and Penmere Train Station. A lovely walk past Swanvale nature reserve leads to Swanpool beach. With a little imagination this bungalow could be transformed into a magnificent family home.





Approx Gross Internal Area
171 sq m / 1836 sq ft



Floorplan

This floorplan is only for illustrative purposes and is not to scale. Measurements of rooms, doors, windows, and any items are approximate and no responsibility is taken for any error, omission or mis-statement. Icons of items such as bathroom suites are representations only and may not look like the real items. Made with Made Snappy 360.

These particulars, whilst believed to be accurate are set out as a general outline only for guidance and do not constitute any part of an offer or contract. Intending purchasers should not rely on them as statements of representation of fact, but must satisfy themselves by inspection or otherwise as to their accuracy. No person in this firm's employment has the authority to make or give any representation or warranty in respect of the property.