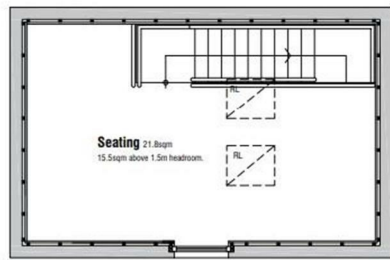
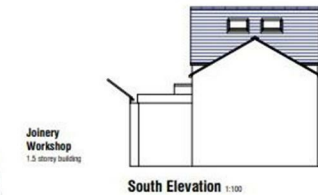
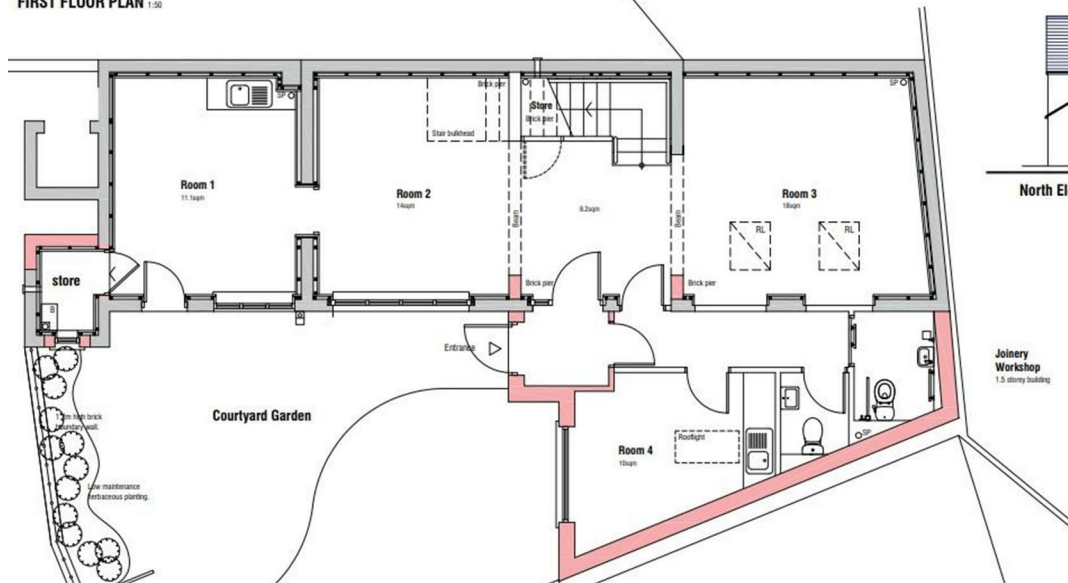
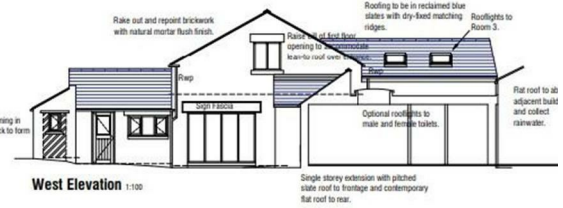
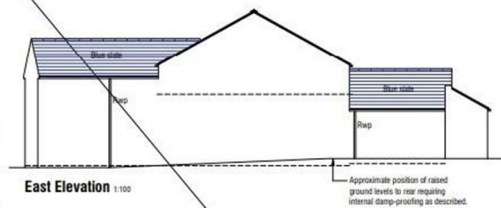


Butchers Yard Blacker Road, Mapplewell S75 6BW

PER MONTH
£1,800 Per Month

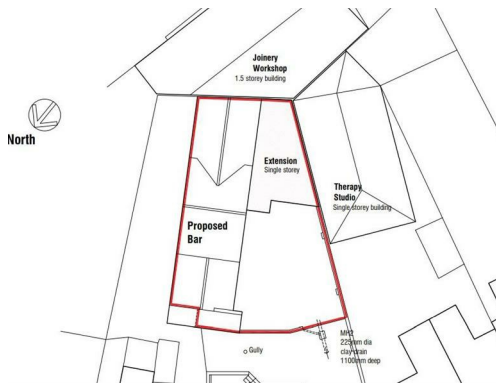


FIRST FLOOR PLAN 1:50



Rev A - 25.02.2025 Add rooflights to room 3.
CHANGE OF USE OF
OUTBUILDINGS TO REAR OF
2 BLACKER ROAD
MAPPLEWELL
BARNSELY S75 6BW

PROPOSALS



THIS IS A FANTASTIC OPPORTUNITY TO LET A UNIQUE
COMMERCIAL PREMISES IN THE HEART OF THE BUSTLING
VILLAGE OF MAPPLEWELL.

PAISLEY
PROPERTIES

General use plans have just been submitted for this superb commercial property, nestled away off Blacker Road in the centre of this wonderful village. This property will be extended and renovated to first fix stage and offered to a lucky tenant to come and help customise the interior space to their own requirements.

The sizable two storey building would lend itself to so many different businesses and not only benefits from approximately 1118 square foot / 104 square meters of versatile floor space but also a charming courtyard style exterior area.

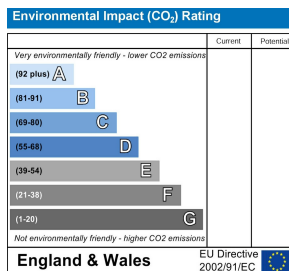
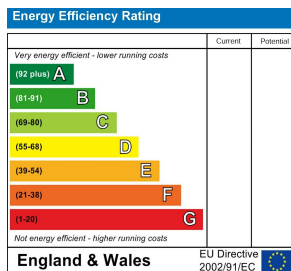
The landlord is open to applying for change usage to suit the right long term tenant offering an exciting opportunity for some to build their business in this completely individual setting at Butchers Yard.

There is already installed CCTV looking over the courtyard.

Terms are negotiable but the landlord is looking for a minimum of 3 year full repair and insure lease.

Legal costs to draw up the lease are to be shared 50/50.

Deposit payable is: TBC



www.paisleyproperties.co.uk

Skelmanthorpe Office:
17 Commercial Road,
Skelmanthorpe, HD8 9DA
t: 01484 443893

Almondbury Office:
75-77 Northgate,
Almondbury, HD5 8RX
t: 01484 443922

Mapplewell Office:
4 Blacker Road,
Mapplewell, S75 6BW
t: 01226 395404

PAISLEY
PROPERTIES