

TRADITIONAL
VALUES & SERVICE

ALASDAIR
MORRISON

FROM AN INDEPENDENT
LOCAL AGENT

AND PARTNERS

Putting you and your property first



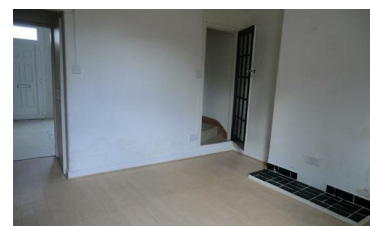
2 Dover Street, Southwell, NG25 0EZ

£800 PCM



Register your interest now for when viewings begin! End terrace house with accommodation comprising of fitted kitchen, dining room, living room and ground floor bathroom. To the first floor are three bedrooms, the third bedroom being accessed through bedroom two. Garden to rear. Strictly no pets. EPC Rating D. Council Tax Band B.

- End Terrace House
- 2 Reception Rooms
- Ground Floor Bathroom
- 3 Bedrooms
- Fitted Kitchen
- Garden to Rear



22 King Street, Southwell Telephone: 01636 813971 southwell@amorrison.co.uk
26 Kirkgate, Newark Telephone: 01636 700888 newark@amorrison.co.uk

 [rightmove.co.uk](https://www.rightmove.co.uk)