



edwards & gray

Thorne Crescent, Worsley

£300,000

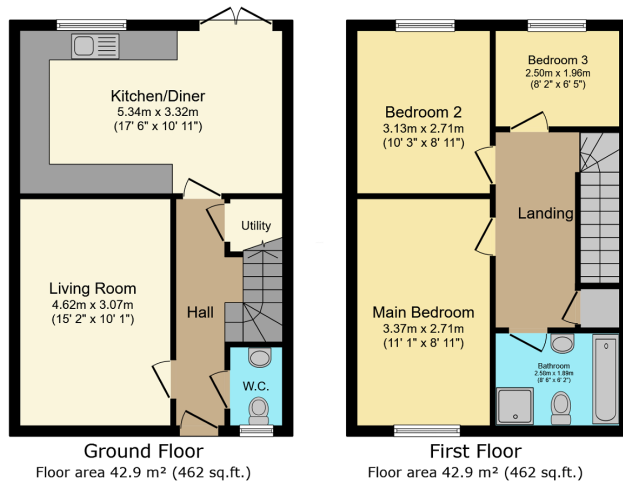
🛏️ 3 🚿 1 🚗 2



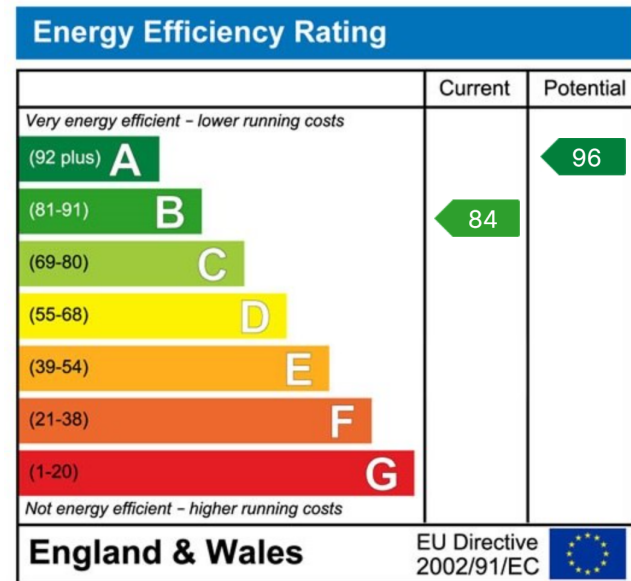
- SOUTH FACING GARDEN
- DRIVEWAY FOR TWO CARS
- AEG APPLIANCES
- BOARDED LOFT
- PLENTY OF STORAGE
- ENVIROVENT VENTILATION SYSTEM
- DOUBLE GLAZING
- GAS CENTRAL HEATING



Edwards and Gray are proud to present to the market this semi detached family home on the sought after Heyfields development. Tucked away in a quiet cul-de-sac within walking distance to Walkden train station, the main bus routes, quick access to the M61 & M60 the gateways to the South and further North. The property is also close to several parks incl Parr Fold, loop lines and country parks.



TOTAL: 85.9 m² (924 sq.ft.)
This floor plan is for illustrative purposes only. It is not drawn to scale. Any measurements, floor areas (including any total floor area), openings and orientations are approximate. No details are guaranteed, they cannot be relied upon for any purpose and do not form any part of any agreement. No liability is taken for any error, omission or misstatement. A party must rely upon its own inspection(s). Powered by www.propertybox.co.uk



Edwards and Gray Estate Agents
 Fort Dunlop, Fort Parkway, Birmingham, B24 9FE

Tel: 0121 368 1538
 Visit: www.edwardsandgray.co.uk
 Email: hello@edwardsandgray.co.uk