



Hawthorn Cottage, Church Road,  
Eardisley HR3 6NN  
£925 Per Calendar Month

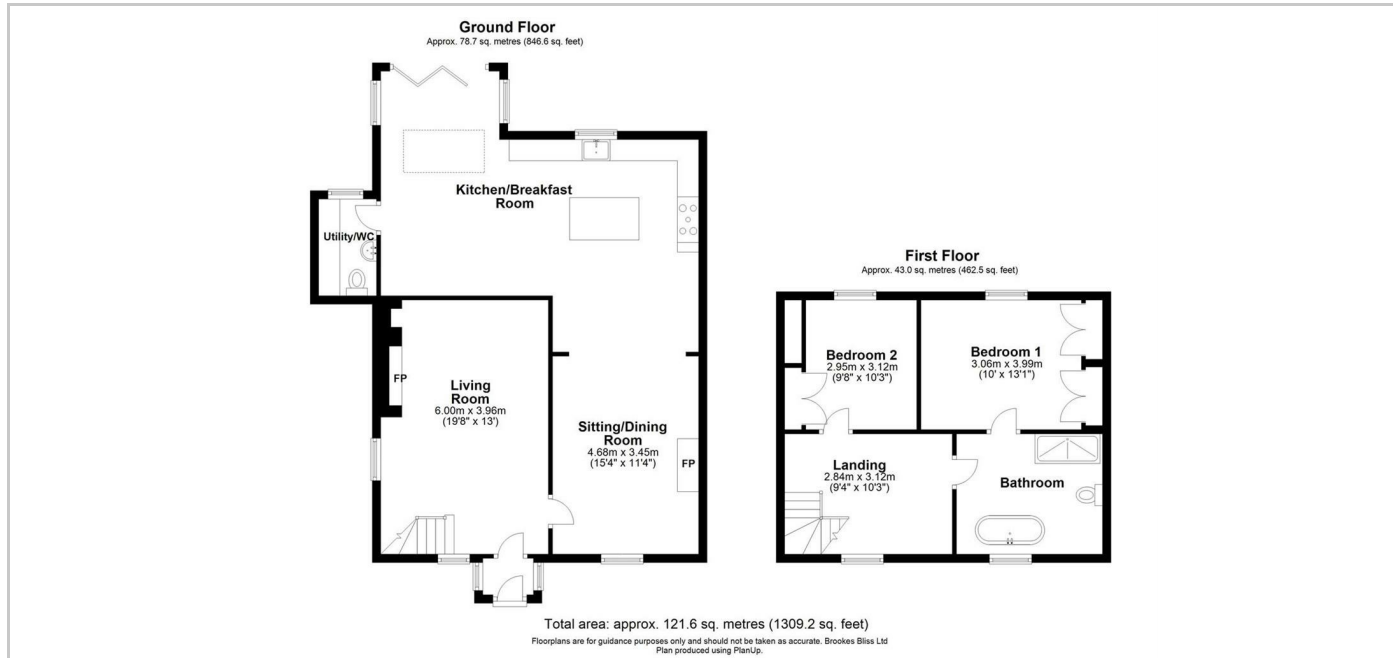
TO LET



## PROPERTY SUMMARY

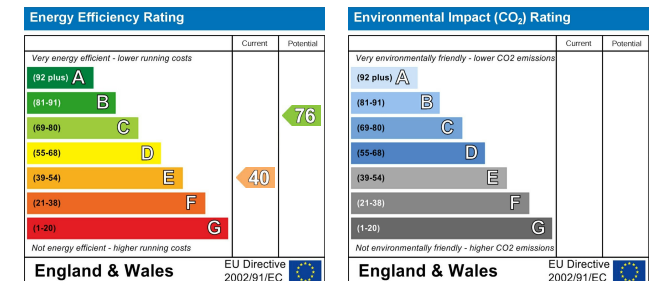
A grade II listed back & white semi detached cottage located in the heart of the village. Comprising spacious kitchen/breakfast room/sun room, lounge with multi fuel stove, dining room, utility/cloakroom, two double bedrooms, bathroom with roll top bath & office area and oil central heating. Beautiful mature gardens to the rear overlooking fields, shed and off road parking.

## NOTES & COMMENTS



## DIRECTIONS

FEES



# Brookes Bliss

These particulars are offered on the understanding that all negotiations are conducted through this company. Neither these particulars, nor oral representations, form part of any offer or contract, and their accuracy cannot be guaranteed.

46 Bridge Street, Hereford, Herefordshire HR4 9DG  
Tel: 01432 343800  
Lettings@brookes.bliss.co.uk

brookesbliss.co.uk  
**rightmove**