



The Old Post Office Harrietfield, Perth, PH1 3TD
Offers over £385,000



The Old Post Office Harrietfield Perth, PH1 3TD

- Notably spacious detached home
- Living room & Sitting room
- Very private rear garden
- Versatile accommodation
- Picturesque location
- 5 bedrooms 2 bathrooms
- Dining kitchen
- Off-street parking
- Double glazing & gas central heating
- Plenty of charm and character

Welcome to this character-filled detached home, perfectly nestled in the picturesque countryside hamlet of Harrietfield. With expansive and versatile interiors, this property offers two warm and inviting reception rooms, five spacious bedrooms, and two bathrooms, providing abundant space for comfortable, flexible living.

A true highlight is the secluded rear garden, surrounded by lush, expansive grounds that create a private oasis—ideal for relaxation, gardening, or simply enjoying nature. Off-street parking for two vehicles further enhances convenience. Overflowing with charm and personality, this home is a rare gem in a tranquil countryside setting. Whether you're seeking a peaceful family retreat or a welcoming space for entertaining, this residence offers an exceptional blend of timeless character, style, and comfort, making it an ideal haven in every season.

Offers over £385,000



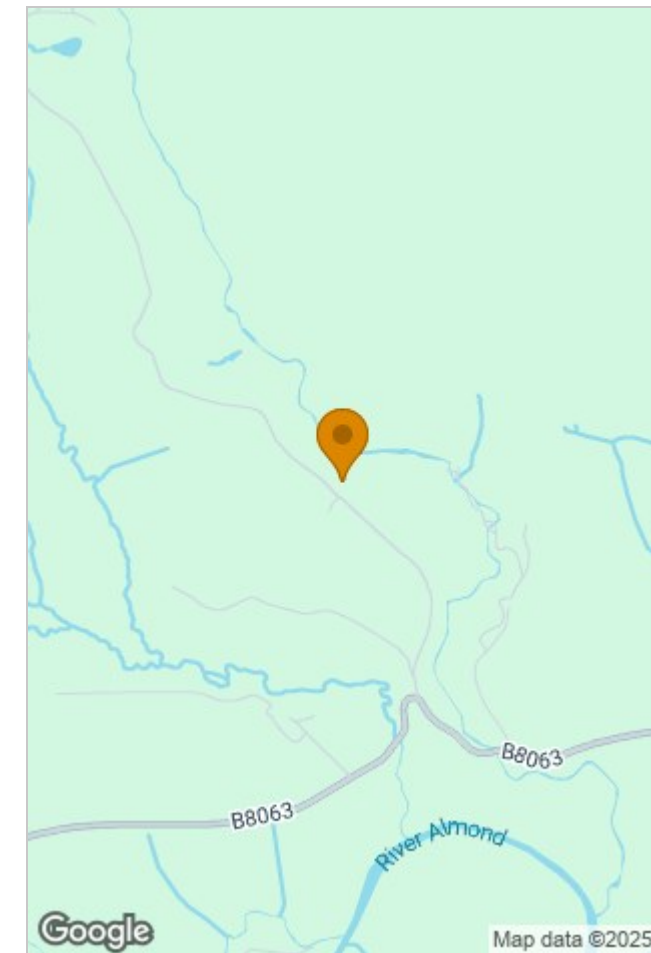
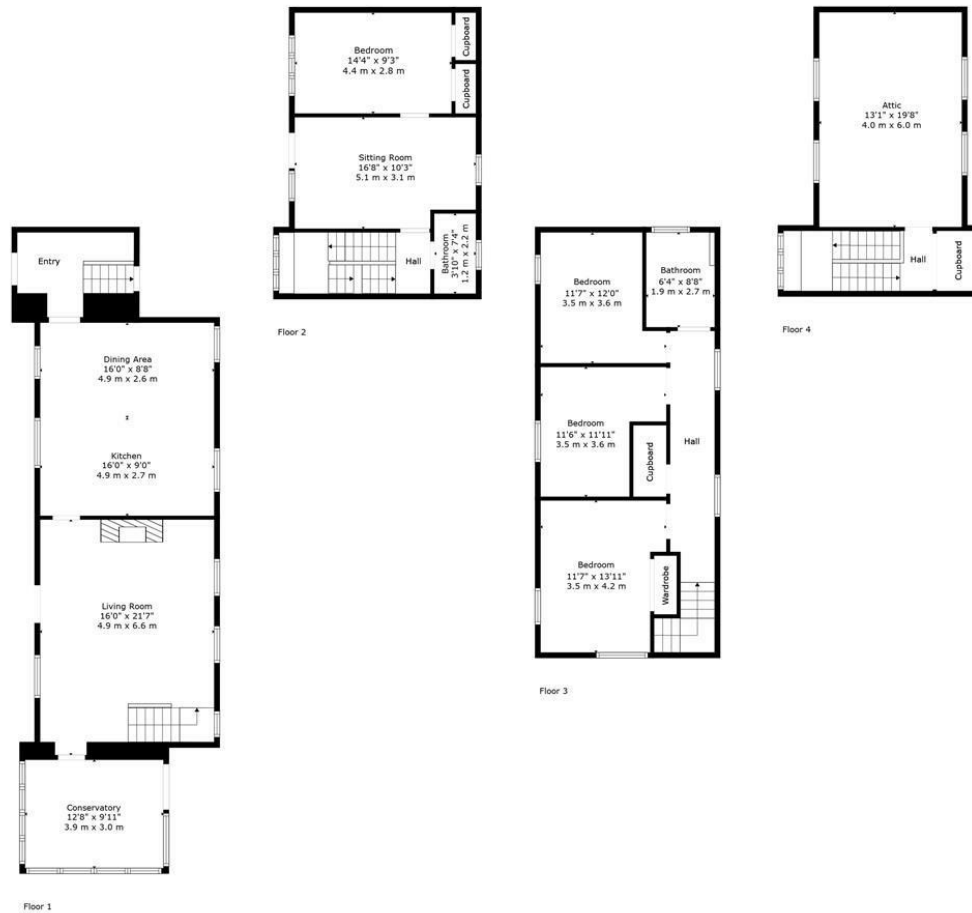


Location

Harrietfield is a charming, quiet hamlet tucked into the beautiful landscapes of Perthshire, Scotland. Known for its rural tranquility and scenic surroundings, Harrietfield offers a picturesque retreat with lush fields and gentle hills. Just a few miles away is Glenalmond College, a distinguished boarding school renowned for its stunning campus and academic heritage. The proximity to Glenalmond adds a unique touch to Harrietfield, making it popular with visitors and residents seeking both natural beauty and a sense of history. This peaceful hamlet is an ideal spot for countryside living or a refreshing getaway.







TOTAL: 2033 sq. ft, 189 m²
 FLOOR 1: 832 sq. ft, 77 m², FLOOR 2: 438 sq. ft, 41 m², FLOOR 3: 616 sq. ft, 57 m², FLOOR 4: 147 sq. ft, 14 m²
 EXCLUDED AREAS: LOW CEILING: 28 sq. ft, 3 m², ATTIC: 188 sq. ft, 17 m²

All Measurements Are Calculated By Cubicasa Technology - Deemed Highly Reliable But Not Guaranteed. Visit Our Website - <https://www.filmworx.co.uk>

Viewing

Please contact our Perth Office on 01738 260 035
 if you wish to arrange a viewing appointment for this property or require further information.

The particulars are set out as a general outline only for the guidance of intended purchasers or lessees, and do not constitute, any part of a contract. Nothing in these particulars shall be deemed to be a statement that the property is in good structural condition or otherwise nor that any of the services, appliances, equipment or facilities are in good working order. Purchasers should satisfy themselves of this prior to purchasing.

