



St Abbs 14 Carrington Terrace, Crieff, PH7 4DY
Offers over £299,950

 3  1  2  D



St Abbs 14 Carrington Terrace Crieff, PH7 4DY

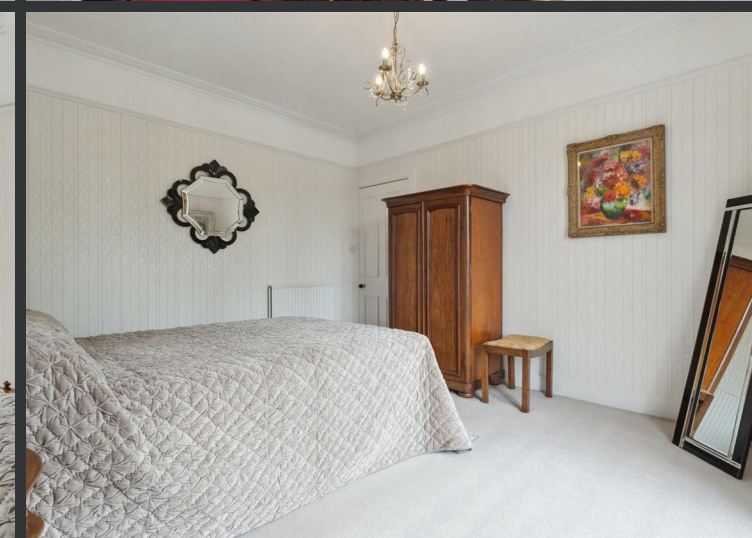
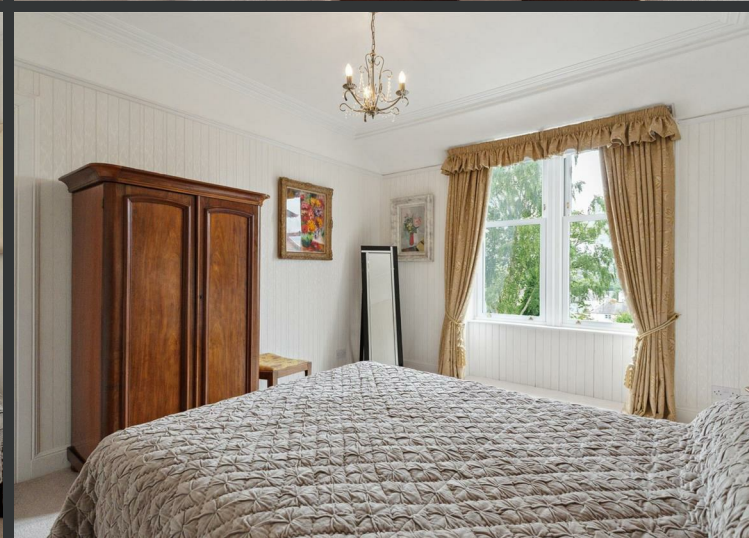
Offers over £299,950

- Characterful semi-detached villa
- Generous living room
- Low maintenance gardens
- Gas central heating
- Very peaceful location
- Three bedrooms
- Spacious family room
- Plenty of parking & detached garage
- Double glazing
- Easy access to town centre

Welcome to St Abbs, 14 Carrington Terrace in Crieff - a charming, semi-detached period villa that exudes character and warmth. This delightful property boasts two reception rooms, three bedrooms, kitchen, downstairs WC and a well-appointed bathroom, offering ample space for comfortable living.

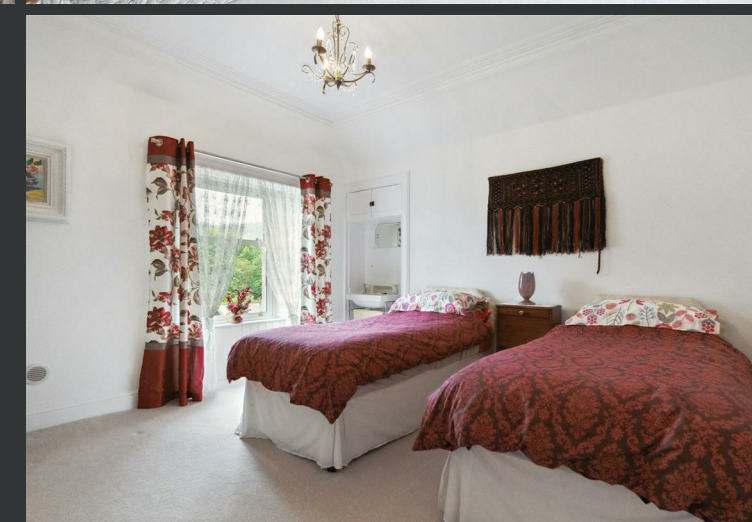
Situated in a peaceful location, this home presents a perfect blend of modern convenience and traditional charm. The property is presented in a move-in condition, allowing you to settle in effortlessly and start creating memories in your new abode. One of the standout features of this lovely home is the generous room proportions, providing a sense of openness and freedom within. The property also offers plenty of off-street parking for up to 4/5 vehicles, along with a garage, ensuring that parking will never be a concern for you or your guests. If you appreciate a home with character, you will be delighted by the unique charm that radiates throughout this property. From the moment you step inside, you will be greeted by a welcoming atmosphere that is sure to make you feel right at home.

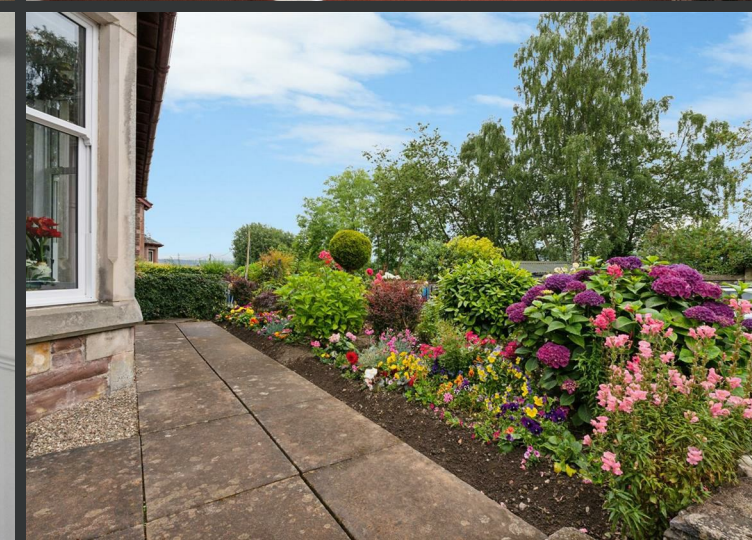


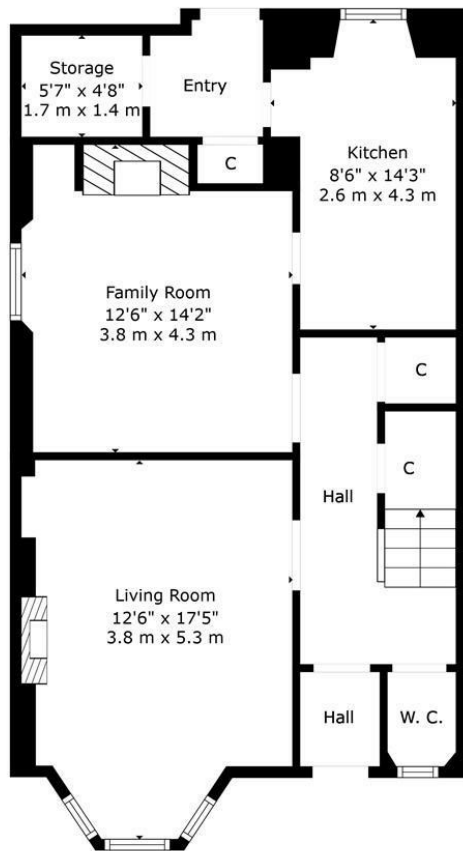


Location

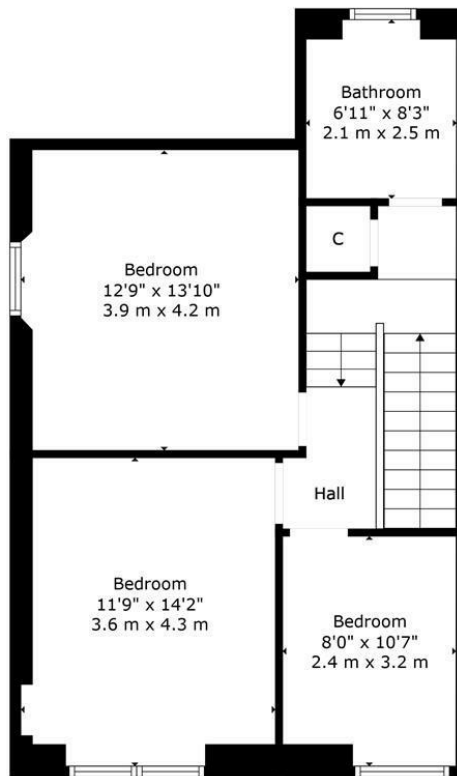
The popular market town of Crieff is well known for its central location and spectacular surrounding countryside. Crieff town centre offers a wide range of restaurants, delis, cafes, boutiques and supermarkets. The surrounding countryside with its picturesque views also offers a wide range of outdoors activities like fishing, shooting, lots of popular walks and several golf courses. A wide choice of leisure facilities are also available like Crieff Hydro's gym and Victorian spa and the community campus offering many classes to suit all ages. With its central location Crieff is well located for commuting to Perth, Stirling, Edinburgh and Glasgow with its central location.



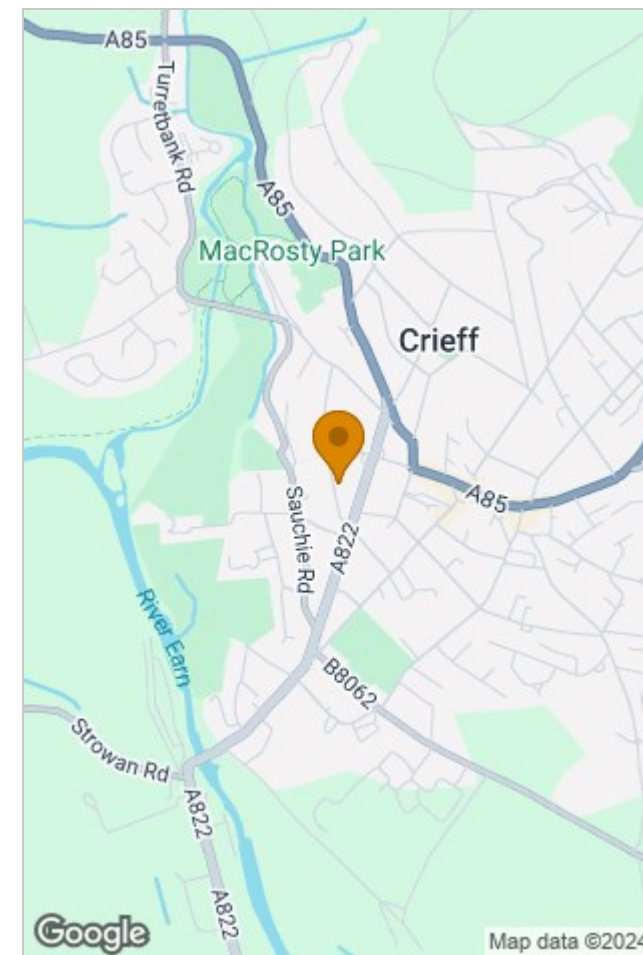




Floor 1



Floor 2



TOTAL: 1287 sq. ft, 120 m²
 FLOOR 1: 677 sq. ft, 63 m², FLOOR 2: 610 sq. ft, 57 m²
 EXCLUDED AREAS: STORAGE: 26 sq. ft, 2 m²

All Measurements Are Calculated By Cubicasa Technology - Deemed Highly Reliable But Not Guaranteed. Visit Our Website - <https://www.filmworx.co.uk>

Viewing

Please contact our Perth Office on 01738 260 035 if you wish to arrange a viewing appointment for this property or require further information.

The particulars are set out as a general outline only for the guidance of intended purchasers or lessees, and do not constitute, any part of a contract. Nothing in these particulars shall be deemed to be a statement that the property is in good structural condition or otherwise nor that any of the services, appliances, equipment or facilities are in good working order. Purchasers should satisfy themselves of this prior to purchasing.

