

# Consfield Avenue

New Malden, KT3 6HE

£900,000

Freehold, End of Terrace House

# FARLEYWOOD

Viewing by appointment only

[www.farleywood.com](http://www.farleywood.com)

- Five bedrooms
- Chain free
- Insulated outbuilding
- Ground floor cloakroom
- Two bathrooms
- Landscaped South-West facing garden
- Driveway parking with EV charging point
- Close to Motspur Park station and high street


A remarkable property which has been carefully extended into a stylish and contemporary family home. The south-west facing garden leads to an insulated outbuilding with ample built-in storage. The recently installed bespoke 'Pluck London' kitchen features high-end appliances. Upstairs are four double bedrooms, a single bedroom, and two modern bathrooms. This impressive light-filled home offers approximately 1,726 sq ft of versatile living space. Ideal for commuters, this property is located just moments from Motspur Park station (25 minutes to London Waterloo).





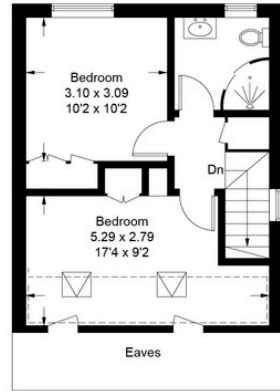


Approximate Gross Internal Area = 146.9 sq m / 1581 sq ft  
 Office = 13.5 sq m / 145 sq ft  
 Total = 160.4 sq m / 1726 sq ft

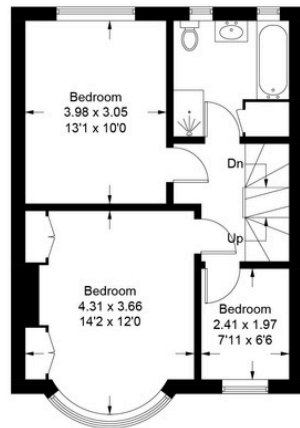
 = Reduced headroom below 1.5m / 5'0"



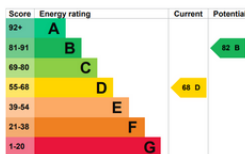
Ground Floor



Second Floor



First Floor



This plan is for layout guidance only. Not drawn to scale unless stated. Windows and door openings are approximate. Whilst every care is taken in the preparation of this plan, please check all dimensions, shapes and compass bearings before making decisions reliant upon them. (ID861918)



Consfield Avenue is a residential road located moments away from Motspur Park mainline station. Nearby Sir Joseph Hood playing fields is a wonderful open space with many facilities.

Motspur Park high street features small independent shops as well as a library and a welcoming pub. New Malden has an exciting and inclusive community spirit, fantastic sports facilities, golf courses, farmers market, local shops and restaurants.

Start your moving story today by contacting FarleyWood.

EPC Rating D and Council Tax Band E.