

£800,000

Freehold, End-of-terrace
Four bedrooms

Mount Road

New Malden
KT3 3JU

FARLEYWOOD

- Four bedrooms plus a study
- Side access to a secluded West facing garden
- Two reception rooms
- Opportunity to extend on the ground floor (STPP)
- End of terrace
- Tree-lined cul-de-sac
- Driveway parking for a small car
- Excellent transport links and local amenities
- Located close to sought-after schools

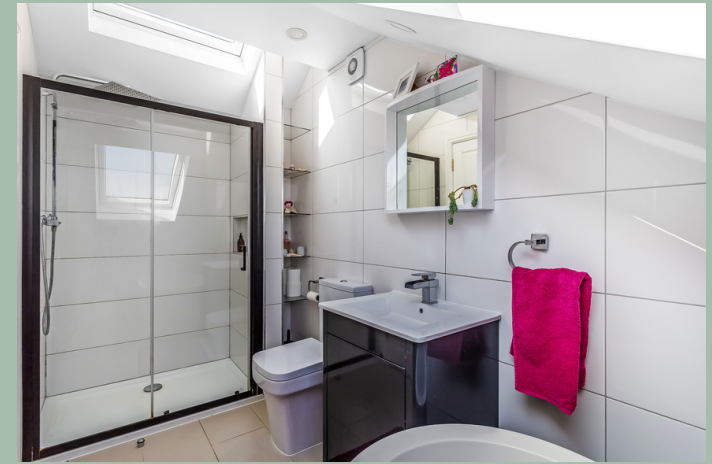
Viewing by appointment only

www.farleywood.com

A generously proportioned Edwardian-style family home that offers a blend of practicality, period features and modern living. Perfect for a growing family, the ample upper floors feature four bedrooms, two bathrooms, and a study. The ground floor offers the advantage of significant potential for extension (STPP) architectural drawings are available upon request. Complimented by a private West facing garden with side access and a large garden shed, excellent use as storage, a home gym or utility. Situated in the 'Groves' area of New Malden with convenient proximity to excellent schools, the vibrant New Malden high street, and the train station.







New Malden



by FarleyWood