



Tel: 02088639718  
557 Pinner Road, Harrow, UK, HA2 6EQ  
[office@mayfords.com](mailto:office@mayfords.com)



**BEACH LODGE, HENDON LANE N3**

**£2,350 PCM**



Mayfords is happy to present this stunning newly refurbished two double bedrooms two bathrooms flat, with over 750sq ft and private underground parking, located on this much sought-after residential development. Situated on the 3rd floor this fantastic property offers a bright and spacious living room area, two double bedrooms, an en-suite bathroom, a separate kitchen, and a family bathroom. There are plenty of storage spaces throughout the property and also gas center heating. The property is superbly located for local transport links & shopping facilities, just moments away from Finchley Central Station. The property is also very well located for catchment areas for local schools.

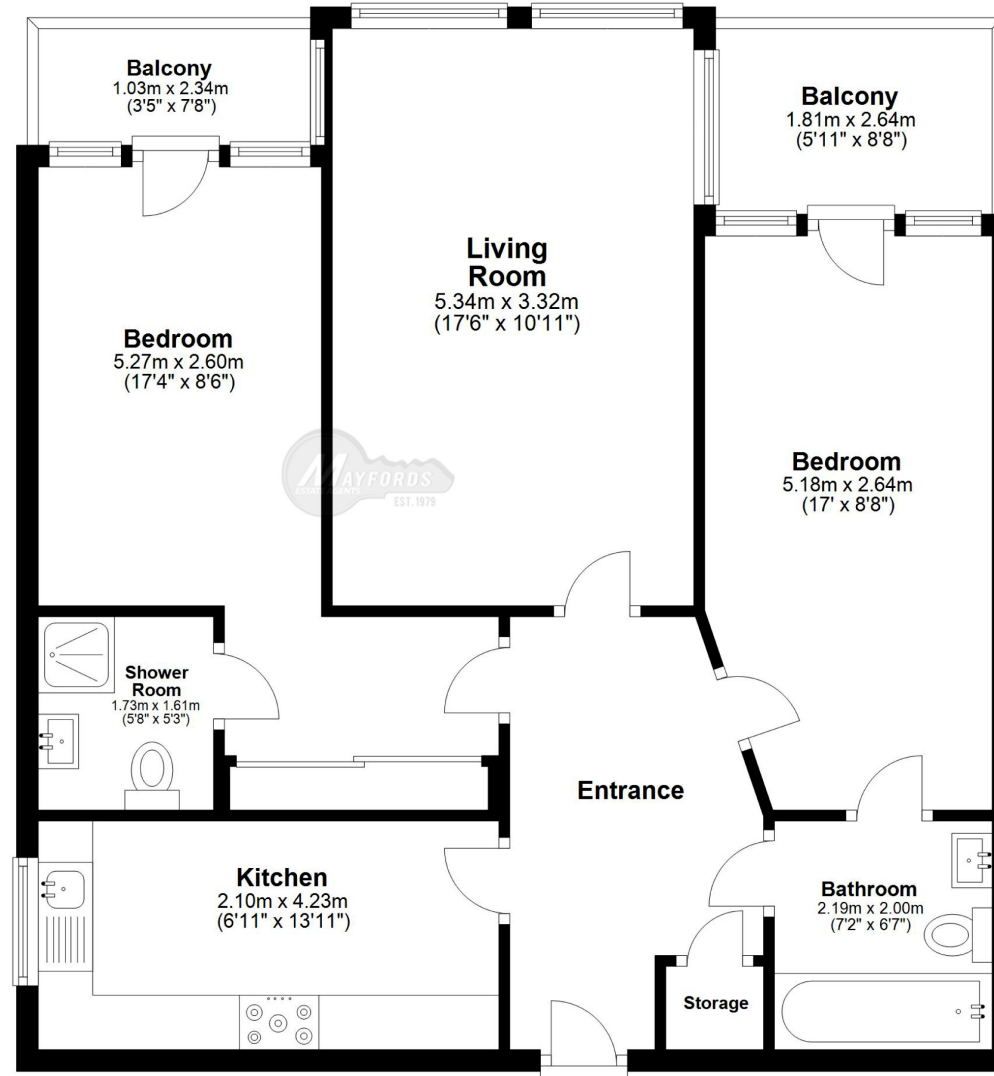
OUR SERVICE, YOUR COMFORT











Plan produce for **MAYFORDS** Estate Agent







# Energy performance certificate (EPC)

Flat 10  
Beach Lodge  
66 Hendon Lane  
LONDON  
N3 1JQ

Energy rating

B

Valid until:

31 October 2032

Certificate number:

7690-0901-3200-7982-3220

Property type

Mid-floor flat

Total floor area

73 square metres

## Rules on letting this property

Properties can be let if they have an energy rating from A to E.

You can read [guidance for landlords on the regulations and exemptions \(https://www.gov.uk/guidance/domestic-private-rented-property-minimum-energy-efficiency-standard-landlord-guidance\)](https://www.gov.uk/guidance/domestic-private-rented-property-minimum-energy-efficiency-standard-landlord-guidance).

## Energy rating and score

This property's energy rating is B. It has the potential to be B.

[See how to improve this property's energy efficiency.](#)

The graph shows this property's current and potential energy rating.

**Properties get a rating from A (best) to G (worst) and a score.** The better the rating and score, the lower your energy bills are likely to be.

For properties in England and Wales:

the average energy rating is D  
the average energy score is 60

Score	Energy rating	Current	Potential
92+	A		
81-91	B	83 B	83 B
69-80	C		
55-68	D		
39-54	E		
21-38	F		
1-20	G		

https://find-energy-certificate.service.gov.uk/energy-certificate/7690-0901-3200-7982-3220?print=true

1/4



## Breakdown of property's energy performance

### Features in this property

Features get a rating from very good to very poor, based on how energy efficient they are. Ratings are not based on how well features work or their condition.

Assumed ratings are based on the property's age and type. They are used for features the assessor could not inspect.

Feature	Description	Rating
Wall	Cavity wall, as built, insulated (assumed)	Good
Window	Fully double glazed	Good
Main heating	Boiler and radiators, mains gas	Good
Main heating control	Programmer, room thermostat and TRVs	Good
Hot water	From main system	Good
Lighting	Low energy lighting in all fixed outlets	Very good
Roof	(another dwelling above)	N/A
Floor	(another dwelling below)	N/A
Secondary heating	None	N/A

### Primary energy use

The primary energy use for this property per year is 86 kilowatt hours per square metre (kWh/m<sup>2</sup>).

---

## How this affects your energy bills

An average household would need to spend **£346 per year on heating, hot water and lighting** in this property. These costs usually make up the majority of your energy bills.

You could **save £0 per year** if you complete the suggested steps for improving this property's energy rating.

This is **based on average costs in 2022** when this EPC was created. People living at the property may use different amounts of energy for heating, hot water and lighting.

---

### Heating this property

Estimated energy needed in this property is:

- 1,257 kWh per year for heating
- 2,037 kWh per year for hot water



Impact on the environment

This property’s environmental impact rating is B. It has the potential to be B.

Properties get a rating from A (best) to G (worst) on how much carbon dioxide (CO2) they produce each year.

Carbon emissions

An average household produces 6 tonnes of CO2

This property produces	1.1 tonnes of CO2
This property’s potential production	1.1 tonnes of CO2

You could improve this property’s CO2 emissions by making the suggested changes. This will help to protect the environment.

These ratings are based on assumptions about average occupancy and energy use. People living at the property may use different amounts of energy.

Changes you could make

The assessor did not make any recommendations for this property.

Help paying for energy improvements

You might be able to get a grant from the [Boiler Upgrade Scheme \(https://www.gov.uk/apply-boiler-upgrade-scheme\)](https://www.gov.uk/apply-boiler-upgrade-scheme). This will help you buy a more efficient, low carbon heating system for this property.

More ways to save energy

Find ways to save energy in your home by visiting [www.gov.uk/improve-energy-efficiency](https://www.gov.uk/improve-energy-efficiency).



## Who to contact about this certificate

### Contacting the assessor

If you're unhappy about your property's energy assessment or certificate, you can complain to the assessor who created it.

Assessor's name	Kabuiku Somo
Telephone	07984 041 753
Email	<a href="mailto:ksomo30@hotmail.com">ksomo30@hotmail.com</a>

### Contacting the accreditation scheme

If you're still unhappy after contacting the assessor, you should contact the assessor's accreditation scheme.

Accreditation scheme	Stroma Certification Ltd
Assessor's ID	STRO025889
Telephone	0330 124 9660
Email	<a href="mailto:certification@stroma.com">certification@stroma.com</a>

### About this assessment

Assessor's declaration	No related party
Date of assessment	31 October 2022
Date of certificate	1 November 2022
Type of assessment	<a href="#">RdSAP</a>