



Tel: 02088639718

China Works, 100 Black Prince Road, London,
London, SE1 7SJ

office@mayfords.com

**19B, UPPER ELMERS END ROAD, BECKENHAM,
BECKENHAM, BECKENHAM, BR3**

£240,000

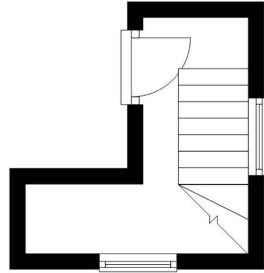
A spacious one bedroom flat located in this sought-after residential area, This flat is vastly bright and spacious with an elegant and neutral interior. This lovely property consist of a spacious separate living room, large double bedroom, modern kitchen and a fully tiled bathroom.The property also comes with a private garden. Good transport links is important and Elmers End is perfectly located with Elmers End Station just walking distance away. Upper Elmers End Road amenities are also minutes away where there are many restaurants, bars and boutique shops.

OUR SERVICE, YOUR COMFORT

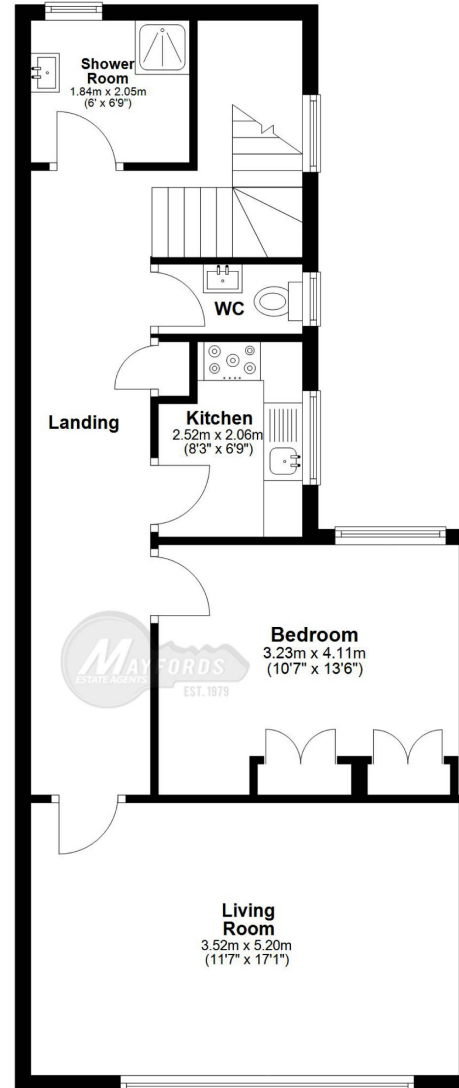








GROUND FLOOR



FIRST FLOOR



Plan produce for **MAYFORDS** Estate Agent



Energy performance certificate (EPC)

19b Upper Elmers End Road BECKENHAM BR3 3QY	Energy rating C	Valid until: 18 July 2029 <hr/> Certificate number: 8702-9686-5539-4097-2313
---	--	---

Property type	Top-floor flat
Total floor area	55 square metres

Rules on letting this property

Properties can be let if they have an energy rating from A to E.

You can read [guidance for landlords on the regulations and exemptions](https://www.gov.uk/guidance/domestic-private-rented-property-minimum-energy-efficiency-standard-landlord-guidance) (<https://www.gov.uk/guidance/domestic-private-rented-property-minimum-energy-efficiency-standard-landlord-guidance>).

Energy rating and score

This property’s current energy rating is C. It has the potential to be C.

[See how to improve this property’s energy efficiency.](#)

The graph shows this property’s current and potential energy rating.

Properties get a rating from A (best) to G (worst) and a score. The better the rating and score, the lower your energy bills are likely to be.

For properties in England and Wales:

the average energy rating is D
 the average energy score is 60

Score	Energy rating	Current	Potential
92+	A		
81-91	B		
69-80	C	80 C	80 C
55-68	D		
39-54	E		
21-38	F		
1-20	G		

Breakdown of property's energy performance

Features in this property

Features get a rating from very good to very poor, based on how energy efficient they are. Ratings are not based on how well features work or their condition.

Assumed ratings are based on the property's age and type. They are used for features the assessor could not inspect.

Feature	Description	Rating
Walls	Average thermal transmittance 0.30 W/m ² K	Good
Roof	Average thermal transmittance 0.17 W/m ² K	Good
Windows	High performance glazing	Very good
Main heating	Boiler and radiators, mains gas	Good
Main heating control	Programmer, room thermostat and TRVs	Good
Hot water	From main system	Good
Lighting	Low energy lighting in all fixed outlets	Very good
Floor	(other premises below)	N/A
Secondary heating	None	N/A
Air tightness	(not tested)	N/A

Primary energy use

The primary energy use for this property per year is 114 kilowatt hours per square metre (kWh/m²).

How this affects your energy bills

An average household would need to spend **£315 per year on heating, hot water and lighting** in this property. These costs usually make up the majority of your energy bills.

You could **save £0 per year** if you complete the suggested steps for improving this property's energy rating.

This is **based on average costs in 2019** when this EPC was created. People living at the property may use different amounts of energy for heating, hot water and lighting.

Heating this property

Estimated energy needed in this property is:

- 1,880 kWh per year for heating
- 1,891 kWh per year for hot water

Impact on the environment

This property's current environmental impact rating is B. It has the potential to be B.

Properties get a rating from A (best) to G (worst) on how much carbon dioxide (CO₂) they produce each year. CO₂ harms the environment.

Carbon emissions

An average household produces 6 tonnes of CO₂

This property produces 1.1 tonnes of CO₂

This property's potential production 1.1 tonnes of CO₂

You could improve this property's CO₂ emissions by making the suggested changes. This will help to protect the environment.

These ratings are based on assumptions about average occupancy and energy use. People living at the property may use different amounts of energy.

Changes you could make

The assessor did not make any recommendations for this property.

Help paying for energy improvements

You might be able to get a grant from the [Boiler Upgrade Scheme \(https://www.gov.uk/apply-boiler-upgrade-scheme\)](https://www.gov.uk/apply-boiler-upgrade-scheme). This will help you buy a more efficient, low carbon heating system for this property.

More ways to save energy

Find ways to save energy in your home by visiting www.gov.uk/improve-energy-efficiency.

Who to contact about this certificate

Contacting the assessor

If you're unhappy about your property's energy assessment or certificate, you can complain to the assessor who created it.

Assessor's name	Mark Heptonstall
Telephone	0113 258 8445
Email	mail@c80solutions.co.uk

Contacting the accreditation scheme

If you're still unhappy after contacting the assessor, you should contact the assessor's accreditation scheme.

Accreditation scheme	Stroma Certification Ltd
Assessor's ID	STRO004925
Telephone	0330 124 9660
Email	certification@stroma.com

About this assessment

Assessor's declaration	No related party
Date of assessment	18 July 2019
Date of certificate	19 July 2019
Type of assessment	SAP