



co.uk

Tel: 02088639718

China Works, 100 Black Prince Road, London,
London, SE1 7SJ

office@mayfords.com

**FLAT 22, ELDRIDGE COURT, ST. MARK'S PLACE,
DAGENHAM, DAGENHAM, RM10**

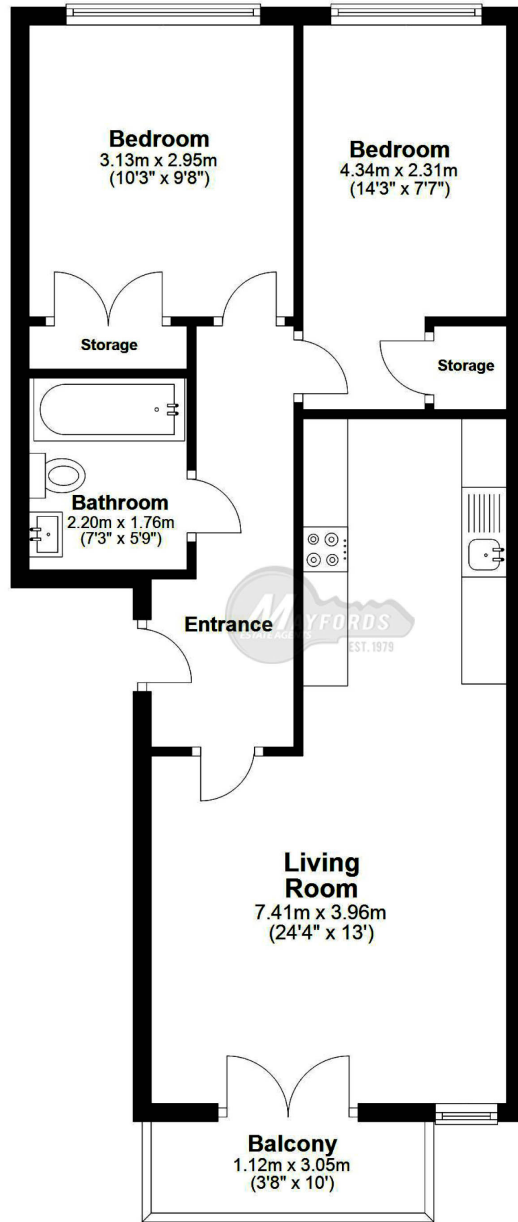
£260,000

Large two bedroom flat which is located within a privately built development. This property has the advantage of being offered with features and benefits including an open plan living space, balcony leading off the living room, good size two double bedroom, parking, communal hallway with security entry phone system, double glazed windows, gas central heating, and neutrally decorated throughout. The property is a short walk to Dagenham Heathway Underground Station, East Dagenham Underground Station, and Heathway shopping centre. This property is a good investment opportunity, also great for a first time buyers.

OUR SERVICE, YOUR COMFORT







Total floor area 55.3 sq. meters (595.3 sq.feet)

This floor plan is for illustrative purposes only.
Floor areas (including total floor area) openings are approximate.
Plan produce for MAYFORDS Estate Agent produced by

www.evolve-uk.co.uk



Energy performance certificate (EPC)

Flat 22 Eldridge Court St. Mark's Place DAGENHAM RM10 8GQ	Energy rating C	Valid until: 6 September 2030 <hr/> Certificate number: 8820-6921-7500-2714-8202
--------------------------------------------------------------------	---------------------------	---------------------------------------------------------------------------------------------------

Property type

Mid-floor flat

Total floor area

55 square metres

Rules on letting this property

Properties can be let if they have an energy rating from A to E.

You can read [guidance for landlords on the regulations and exemptions](https://www.gov.uk/guidance/domestic-private-rented-property-minimum-energy-efficiency-standard-landlord-guidance) (<https://www.gov.uk/guidance/domestic-private-rented-property-minimum-energy-efficiency-standard-landlord-guidance>).

Energy rating and score

This property's current energy rating is C. It has the potential to be C.

[See how to improve this property's energy efficiency.](#)

Score	Energy rating	Current	Potential
92+	A		
81-91	B		
69-80	C	80 C	80 C
55-68	D		
39-54	E		
21-38	F		
1-20	G		

The graph shows this property's current and potential energy rating.

Properties get a rating from A (best) to G (worst) and a score. The better the rating and score, the lower your energy bills are likely to be.

For properties in England and Wales:

the average energy rating is D
the average energy score is 60

Breakdown of property's energy performance

Features in this property

Features get a rating from very good to very poor, based on how energy efficient they are. Ratings are not based on how well features work or their condition.

Assumed ratings are based on the property's age and type. They are used for features the assessor could not inspect.

Feature	Description	Rating
Wall	Cavity wall, as built, insulated (assumed)	Good
Window	Fully double glazed	Good
Main heating	Boiler and radiators, mains gas	Good
Main heating control	Programmer, room thermostat and TRVs	Good
Hot water	From main system	Good
Lighting	Low energy lighting in 83% of fixed outlets	Very good
Roof	(another dwelling above)	N/A
Floor	(another dwelling below)	N/A
Secondary heating	None	N/A

Primary energy use

The primary energy use for this property per year is 116 kilowatt hours per square metre (kWh/m²).

How this affects your energy bills

An average household would need to spend **£342 per year on heating, hot water and lighting** in this property. These costs usually make up the majority of your energy bills.

You could **save £0 per year** if you complete the suggested steps for improving this property's energy rating.

This is **based on average costs in 2020** when this EPC was created. People living at the property may use different amounts of heating, hot water and lighting.

Heating this property

Estimated energy needed in this property is:

- 1,688 kWh per year for heating
- 1,787 kWh per year for hot water

More ways to save energy

Find ways to save energy in your home by visiting www.gov.uk/improve-energy-efficiency.

Environmental impact of this property

This property's current environmental impact rating is B. It has the potential to be B.

Properties get a rating from A (best) to G (worst) on how much carbon dioxide (CO₂) they produce each year. CO₂ harms the environment.

An average household produces	6 tonnes of CO ₂
-------------------------------	-----------------------------

This property produces	1.1 tonnes of CO ₂
------------------------	-------------------------------

This property's potential production	1.1 tonnes of CO ₂
--------------------------------------	-------------------------------

You could improve this property's CO₂ emissions by making the suggested changes. This will help to protect the environment.

Environmental impact ratings are based on assumptions about average occupancy and energy use. They may not reflect how energy is consumed by the people living at the property.

Changes you could make

The assessor did not make any recommendations for this property.

[Simple Energy Advice has guidance on improving a property's energy use.](https://www.simpleenergyadvice.org.uk/)
(<https://www.simpleenergyadvice.org.uk/>)

Paying for energy improvements

You might be able to get a grant from the [Boiler Upgrade Scheme](https://www.gov.uk/apply-boiler-upgrade-scheme) (<https://www.gov.uk/apply-boiler-upgrade-scheme>). This will help you buy a more efficient, low carbon heating system for this property.

Who to contact about this certificate

Contacting the assessor

If you're unhappy about your property's energy assessment or certificate, you can complain to the assessor who created it.

Assessor's name	Feroz Chamadiya
Telephone	07946876877
Email	info@elepc.co.uk

Contacting the accreditation scheme

If you're still unhappy after contacting the assessor, you should contact the assessor's accreditation scheme.

Accreditation scheme	Quidos Limited
Assessor's ID	QUID206171
Telephone	01225 667 570
Email	info@quidos.co.uk

About this assessment

Assessor's declaration	No related party
Date of assessment	4 September 2020
Date of certificate	7 September 2020
Type of assessment	RdSAP
