



01947 601301



# FLAT 3, 9 BROOMFIELD TERRACE, WHITBY

2 BED APARTMENT



[WWW.HOPEANDBRAIMESTATEAGENTS.CO.UK](http://WWW.HOPEANDBRAIMESTATEAGENTS.CO.UK)





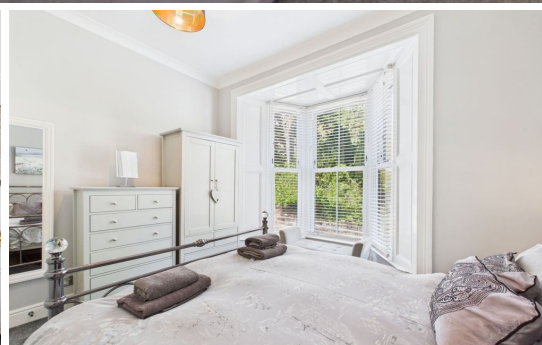
## PROPERTY FEATURES

- Stylish Apartment within a Victorian Building
- Open Plan Living & Newly Fitted Kitchen
- 2 Bedrooms & Modern Bathroom
- Gas Central Heating & Double-Glazing Throughout
- Views Across To Pannett Park and a Short Walk To The Town Centre
- Currently A Successful Holiday Let That Comes Fully Furnished
- 2 Parking Spaces for the 5 Residents, On a First Come, First Served Basis
- 999 Year Lease From 2021 with a Share of the Freehold and a Service Charge Of £1,200 Per Year

Type: **APARTMENT**  
Availability: **FOR SALE**  
Bedrooms: **2**  
Bathrooms: **1**  
Reception Rooms: **1**  
Tenure: **LEASEHOLD**

01947 601301

[www.hopeandbraimstateagents.co.uk](http://www.hopeandbraimstateagents.co.uk)



FLAT 3, 9 BROOMFIELD TERRACE, WHITBY- 2 bed Apartment -£195,000





Hope & Braim are delighted to present Flat 3, 9 Broomfield Terrace in Whitby.

Stylish Victorian Apartment Overlooking Pannett Park

Occupying the first floor of a striking Victorian building, this beautifully refurbished apartment boasts a prime location directly across from Pannett Park and just a short stroll from the vibrant town centre.

With modern décor throughout, the property benefits from gas central heating and double glazing. The spacious living area is flooded with natural light thanks to its dual aspect and two large bay windows. There is ample room for two sofas, as well as a dining table comfortably seating four—perfect for relaxing or entertaining.

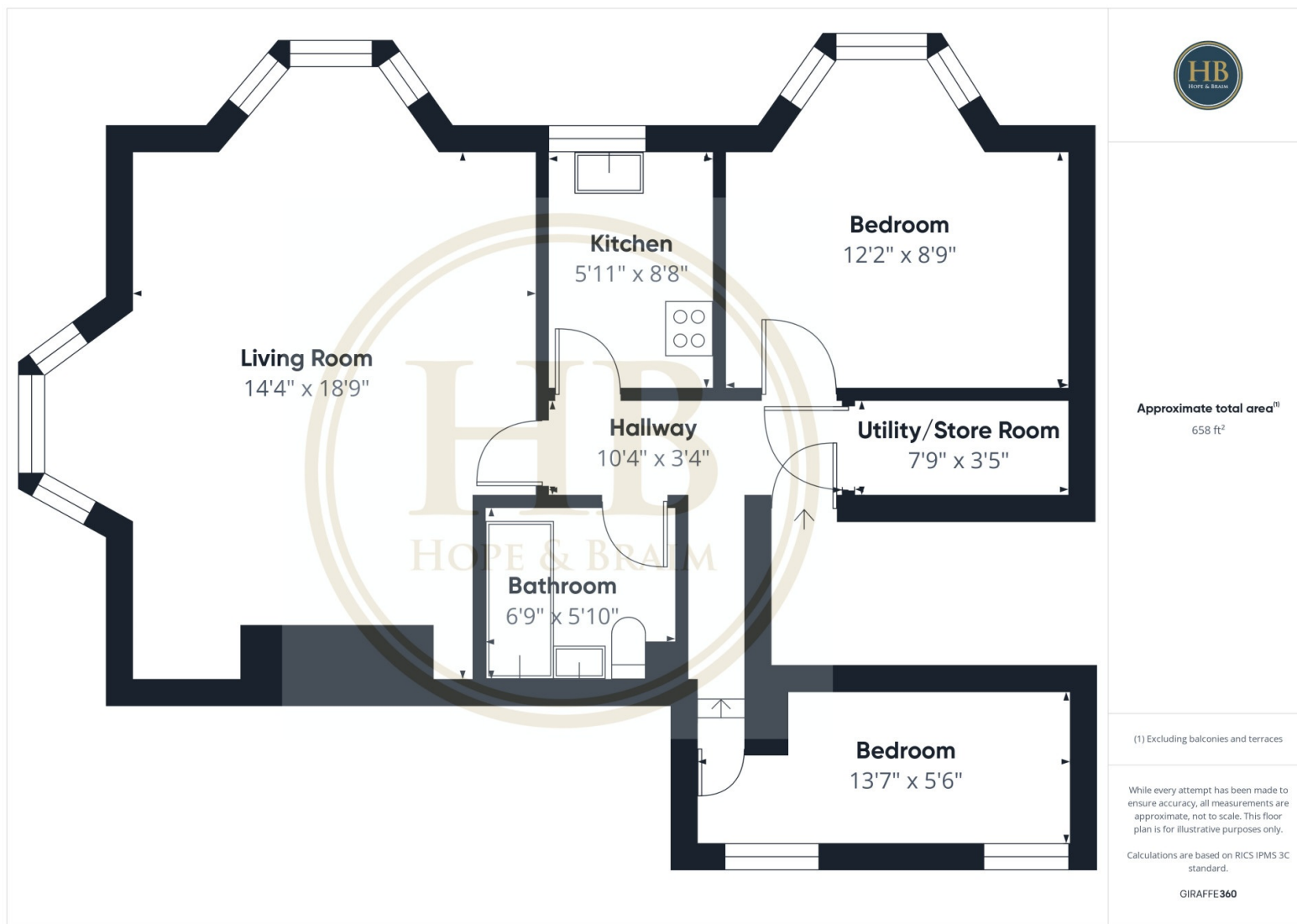
The recently fitted kitchen features a built-in electric oven and hob, along with a freestanding washing machine & fridge freezer.

Off the central hallway are two bedrooms and a stylish three-piece bathroom with a shower over the bath. The principal bedroom enjoys a bay window with views over the park, a king size bed, and a freestanding wardrobe. The second bedroom is currently arranged with bunk beds suitable for adults.

This apartment is a successful holiday let, and it's easy to see why—beautifully presented, fully equipped, and ideally located for exploring this popular coastal town. The property can be offered fully furnished with forward bookings in place, making it an excellent buy-to-let investment or an idyllic holiday retreat.



FLAT 3, 9 BROOMFIELD TERRACE, WHITBY- 2 bed Apartment -£195,000



Disclaimer: This brochure and property details are a representation of the property offered for sale or rent, as a guide only.

Brochure content must not be relied upon as fact and does not form any part of a contract. Measurements are approximate.

No fixtures or fittings, heating system or appliances have been tested, nor are they warranted by Hope & Braim or any staff member in any way as being functional or regulation compliant.

Hope & Braim do not accept any liability for any loss that may be caused directly or indirectly by the brochure content, all interested parties must rely on their own, their surveyor's or solicitor's findings.

We advise all interested parties to check with the local planning office for details of any application or decisions that may be consequential to your decision to purchase or rent any property.

Any floor plans provided should be used for illustrative purposes only and should be used as such by any interested party.

